

## 4.0 Sockets

---



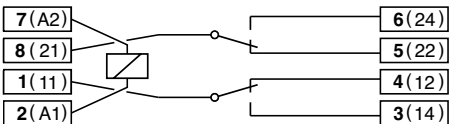
S2-B

Socket for 8-pin standard relay according to IEC 67-I-5B

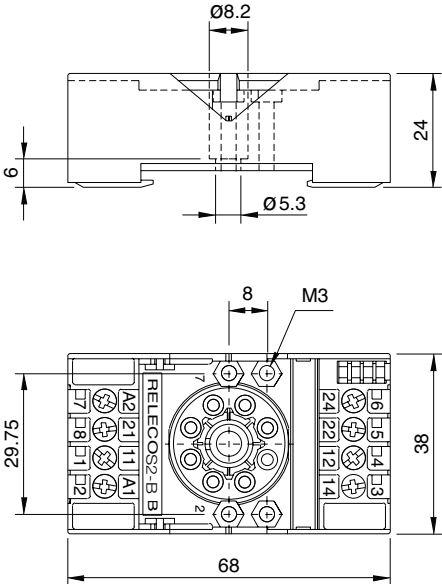
Type	<b>S2-B</b> 2-pole, 1 connection level Coding ring optional Integrated retaining clip and labelling space
Rated current	<b>10 A</b>
Specifications	
Rated load	10 A / 300 V
Insulation	Test voltage V rms / 1 min
– All terminals/DIN rail	2,5 kV
– Terminal/terminal	2,5 kV
Cross-section of connecting wire	
– Single-wire	4 mm² or 2 x 2,5 mm²
– Multi-wire	22 - 14 AWG
Max. screw torque	0.7 Nm
Screw dimensions	M3, Pozi, slot
Integrated retaining clip/plastic	for relay series C2
Labelling space	detachable
Connection label	1...8; DIN/EN
Mounting	DIN rail T35 or mounting plate
Ambient temperature operation/storage	-40 (no ice)...60 °C / -40 ... 80 °C
Weight	48g
Associated, plug-in 8-pin MRC relays	<b>C2-A, C2-G, C2-T</b>
Suitable for holding the Releco coding ring	
For coding the relay and the socket.	
Accessories	
Coding ring, blue set:	<b>S2-BC</b>
	Packaging unit: 5 pcs
Retaining spring, steel	<b>S3-C, S3-CT</b> (with Timecube)
Retaining clip, plastic	<b>CP-15B</b>



Connection diagram



Dimensions [mm]



Technical approvals, conformities



EN 60947-1, EN 61810-1

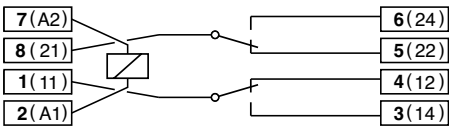
S20-B

Socket for 8-pin standard relay according to IEC 60067

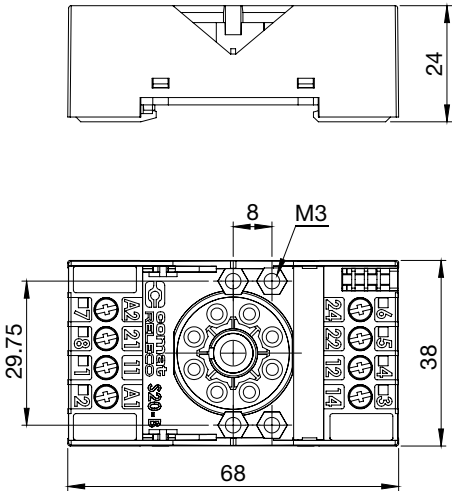
<b>Type</b>	<b>S20-B</b> 2-pole, 1 connection level Integrated retaining clip and labelling space
<b>Rated current</b>	<b>10 A</b>
<b>Specifications</b>	
Rated load	10 A / 300 V
Insulation	Test voltage V rms / 1 min
– All terminals/DIN rail	2,5 kV
– Terminal/terminal	2,5 kV
Cross-section of connecting wire	
– Single-wire	2,5 mm <sup>2</sup> or 2 x 1,5 mm <sup>2</sup>
– Multi-wire	22 - 14 AWG
Max. screw torque	0.7 Nm
Screw dimensions	M3, Pozi, slot
Integrated retaining clip/plastic	for relay series C20
Labelling space	detachable
Connection label	1...8; DIN/EN
Mounting	DIN rail T35 or mounting plate
Ambient temperature operation/storage	-40 (no ice)....60 °C /-40 ... 80 °C
Weight	48 g
<b>Associated, plug-in 8-pin relays</b>	<b>C20-A</b>
<b>Accessories</b>	
Retaining spring, steel	<b>HF-32, HF-33</b> (with Timecube)
Retaining clip, plastic	<b>S30-CM</b>



Connection diagram



Dimensions [mm]



Technical approvals, conformities



EN 60947-1, EN 61810-1

MRC series  
**S2-L, S2-P, S2-PO**

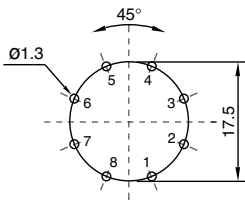
Socket for PCB and soldering according to IEC 67-I-5b for relays C2-...



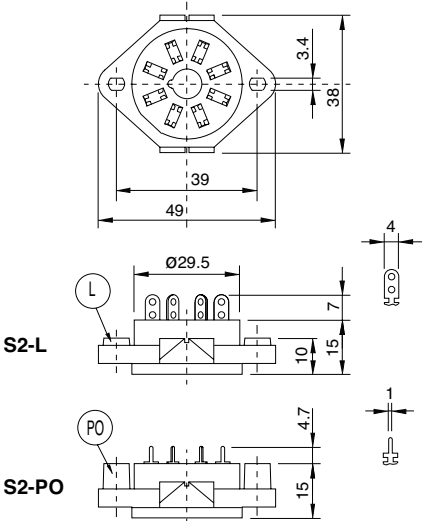
Type	<b>S2-L</b> 2-pole, flange panel mountable
	<b>S2-P</b> 2-pole, printed circuit
	<b>S2-PO</b> 2-pole, printed circuit with flange
Rated current	10 A
<b>Specifications</b>	
Rated load	10 A / 300 V
Insulation	test voltage Vrms / 1min
Between terminals	2,5 kV
Connection label	1...8; DIN/EN
Ambient temperature operation/storage	-40 (no ice)...60 °C / -40 ... 80 °C
Weight	17g
<b>Accessories</b>	
Retaining spring, steel	<b>S3-C</b>



Printed circuit lay-out [mm]



Dimensions [mm]



Technical approvals, conformities



EN 60947-1, EN 61810-1

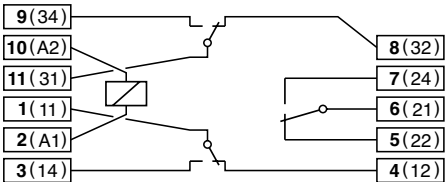
<b>Type</b>	<b>S3-B</b> 3-pole, 1 connection level Coding ring optional Integrated retaining clip and labelling space
<b>Rated current</b>	<b>10 A</b>
<b>Specifications</b>	
Rated load	10 A / 250 V
Insulation	Test voltage V rms / 1 min
All terminals/DIN rail	2,5 kV
– Terminal/terminal	2,5 kV
Cross-section of connecting wire	
– Single-wire	4 mm <sup>2</sup> or 2 x 2,5 mm <sup>2</sup>
– Multi-wire	22 - 14 AWG
Max. screw torque	0.7 Nm
Screw dimensions	M3, Pozi, slot
Integrated retaining clip/plastic	for relay series C3
Labelling space	detachable
Connection label	1... 11; DIN/EN
Mounting	DIN rail T35 or mounting plate
Ambient temperature	-40 (no ice)...60 °C / -40 ... 80 °C
Weight	55g

<b>Associated, plug-in 11-pin MRC relays</b>	<b>C3-A, C3-G, C3-T, C3-X, C3-M, C3-R, C3-E, C3-N, C3-S</b>
Suitable for holding the Releco coding ring	
For coding the relay and the socket.	

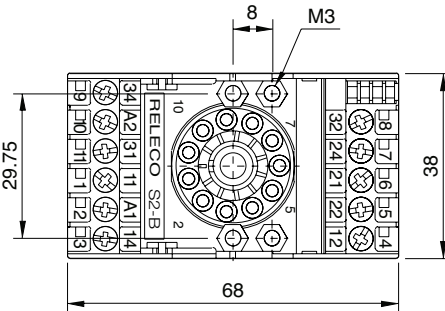
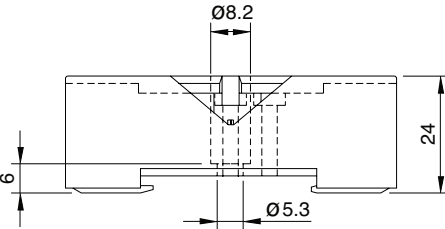
<b>Accessories</b>	
<b>Coding ring, blue set:</b>	<b>S3-BC</b> Packaging unit: 5 pcs
Retaining spring, steel	<b>S3-C, S3-CT</b> (with Timecube)
Retaining clip, plastic	<b>CP-15B</b>



Connection diagram



Dimensions [mm]



Technical approvals, conformities



EN 60947-1, EN 61810-1

S30-B

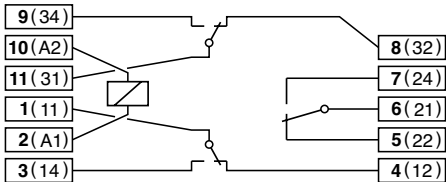
Socket for 11-pin standard relay according to IEC 60067



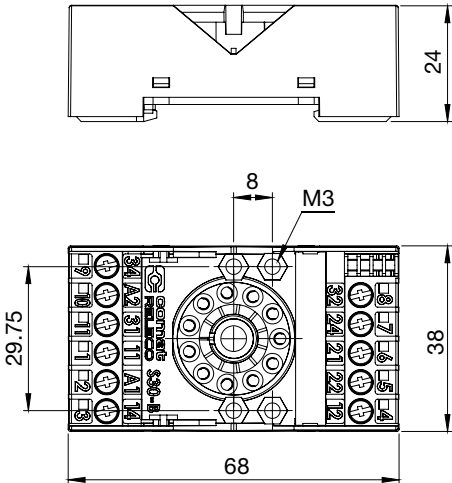
Type	<b>S30-B</b> 3-pole, 1 connection level Integrated retaining clip and labelling space
Rated current	<b>10 A</b>
Specifications	
Rated load	10 A / 250 V
Insulation	Test voltage V rms / 1 min
All terminals/DIN rail	2,5 kV
– Terminal/terminal	2,5 kV
Cross-section of connecting wire	
– Single-wire	2,5 mm² or 2 x 1,5 mm²
– Multi-wire	22 - 14 AWG
Max. screw torque	0.7 Nm
Screw dimensions	M3, Pozi, slot
Integrated retaining clip/plastic	for relay series C30
Labelling space	detachable
Connection label	1... 11; DIN/EN
Mounting	DIN rail T35 or mounting plate
Ambient temperature	-40 (no ice)...60 °C / -40 ... 80 °C
Weight	55 g
Associated, plug-in 11-pin relays	<b>C30-A, C30-M, C30-T, C30-R, C30-X</b>
Accessories	
Retaining spring, steel	<b>HF-32, HF-33</b> (with Timecube)
Retaining clip, plastic	<b>S30-CM</b>



Connection diagram



Dimensions [mm]



Technical approvals, conformities



EN 60947-1, EN 61810-1

<b>Type</b>	<b>S3-MP</b> 3-pole, 1 connection level Integrated retaining clip and labelling space Accepts plug-in modules M3P in parallel with the coil																														
<b>Rated current</b>	<b>10 A</b>																														
<b>Specifications</b>	<table><tr><td>Rated load</td><td>10 A / 250 V</td></tr><tr><td>Insulation</td><td>Test voltage V rms / 1 min</td></tr><tr><td>– All terminals/DIN rail</td><td>2,5 kV</td></tr><tr><td>– Terminal/terminal</td><td>2,5 kV</td></tr><tr><td>Cross-section of connecting wire</td><td></td></tr><tr><td>– Single-wire</td><td>4 mm<sup>2</sup> or 2 x 2,5 mm<sup>2</sup></td></tr><tr><td>– Multi-wire</td><td>22 - 14 AWG</td></tr><tr><td>Max. screw torque</td><td>0.7 Nm</td></tr><tr><td>Screw dimensions</td><td>M3, Pozi, slot</td></tr><tr><td>Integrated retaining clip/plastic</td><td>for relay series C3</td></tr><tr><td>Labelling space</td><td>detachable</td></tr><tr><td>Connection label</td><td>1...11; DIN/EN</td></tr><tr><td>Mounting</td><td>DIN rail T35 or mounting plate</td></tr><tr><td>Ambient temperature operation/storage</td><td>-40 (no ice)...60 °C / -40 ... 80 °C</td></tr><tr><td>Weight</td><td>54g</td></tr></table>	Rated load	10 A / 250 V	Insulation	Test voltage V rms / 1 min	– All terminals/DIN rail	2,5 kV	– Terminal/terminal	2,5 kV	Cross-section of connecting wire		– Single-wire	4 mm <sup>2</sup> or 2 x 2,5 mm <sup>2</sup>	– Multi-wire	22 - 14 AWG	Max. screw torque	0.7 Nm	Screw dimensions	M3, Pozi, slot	Integrated retaining clip/plastic	for relay series C3	Labelling space	detachable	Connection label	1...11; DIN/EN	Mounting	DIN rail T35 or mounting plate	Ambient temperature operation/storage	-40 (no ice)...60 °C / -40 ... 80 °C	Weight	54g
Rated load	10 A / 250 V																														
Insulation	Test voltage V rms / 1 min																														
– All terminals/DIN rail	2,5 kV																														
– Terminal/terminal	2,5 kV																														
Cross-section of connecting wire																															
– Single-wire	4 mm <sup>2</sup> or 2 x 2,5 mm <sup>2</sup>																														
– Multi-wire	22 - 14 AWG																														
Max. screw torque	0.7 Nm																														
Screw dimensions	M3, Pozi, slot																														
Integrated retaining clip/plastic	for relay series C3																														
Labelling space	detachable																														
Connection label	1...11; DIN/EN																														
Mounting	DIN rail T35 or mounting plate																														
Ambient temperature operation/storage	-40 (no ice)...60 °C / -40 ... 80 °C																														
Weight	54g																														
<b>Associated, plug-in 11-pin MRC relays</b>	<b>C3-A, C3-G, C3-T, C3-X, C3-M, C3-R, C3-E, C3-N, C3-S</b>																														
Suitable for holding the Releco coding ring For coding the relay and the socket.																															

**Accessories**

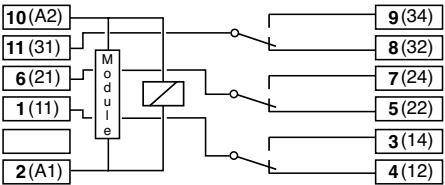
Coding ring, blue set:

Parallel module  
Retaining spring, steel  
Retaining clip, plastic

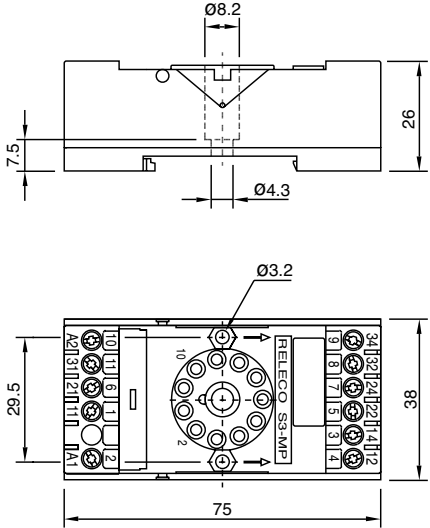
**S3-BC**  
Packaging unit: 5 pcs  
**M3P**  
**S3-C, S3-CT** (with Timecube)  
**CP-15B**



**Connection diagram**



**Dimensions [mm]**



**Technical approvals, conformities**

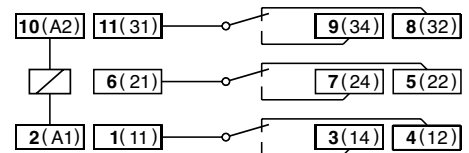


EN 60947-1, EN 61810-1

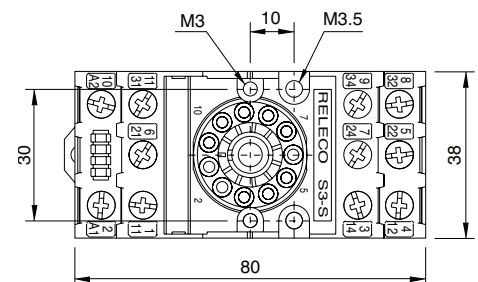
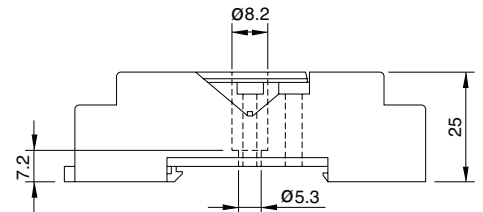
<b>Type</b>	<b>S3-S</b> 3-pole, 2 connection level Coding ring optional Integrated retaining clip and labelling space
<b>Rated current</b>	<b>10 A</b>
<b>Specifications</b>	
Rated load	10 A / 250 V
Insulation	Test voltage V rms / 1 min
– All terminals/DIN rail	2,5 kV
– Terminal/terminal	2,5 kV
Cross-section of connecting wire	
– Single-wire	4 mm <sup>2</sup> or 2 x 2,5 mm <sup>2</sup>
– Multi-wire	22 - 14 AWG
Max. screw torque	1,2 Nm
Screw dimensions	M3, Pozi, slot
Integrated retaining clip/plastic	for relay series C3
Labelling space	detachable
Connection label	1...11; DIN/EN
Mounting	DIN rail T35 or mounting plate
Ambient temperature operation/storage	-40 (no ice)...60 °C / -40 ... 80 °C
Weight	69g
<b>Associated, plug-in 11-pin MRC relays</b>	<b>C3-A, C3-G, C3-T, C3-X, C3-M, C3-R, C3-E, C3-N, C3-S</b>
Suitable for holding the Releco coding ring	
For coding the relay and the socket.	
DIN rail or panel mounting. Removable label.	
EN /DIN and sequential numbering. According to EN 60947.1 and IEC 61810.1	
<b>Accessories</b>	
Coding ring, Set red:	<b>S3-BC</b>
	Packaging unit: 5 pcs
Retaining spring, steel	<b>S3-C, S3-CT</b> (with Timecube)
Retaining clip, plastic	<b>CP-15B</b>



#### Connection diagram



#### Dimensions [mm]



#### Technical approvals, conformities



EN 60947-1, EN 61810-1



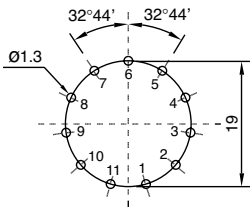
**S3-L, S3-P, S3-PO**

Socket for PCB and soldering, according to IEC 67-I-5b for relays C3-...

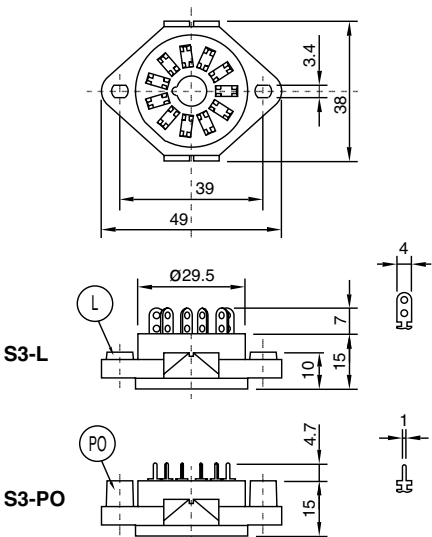
<b>Type</b>	<b>S3-L</b> 3-pole, flange panel mountable
	<b>S3-PO</b> 3-pole, printed circuit with flange
<b>Rated current</b>	<b>10 A</b>
<b>Specifications</b>	
	Rated load 10 A / 250 V
	Dielectric strength adjacent pin 2.5 kV
	Weight 17g
<b>Accessories</b>	
	Retaining spring, steel <b>S3-C</b>



**Printed circuit lay-out [mm]**



**Dimensions [mm]**



**Technical approvals, conformities**



EN 60947-1, EN 61810-1

## C12B0

### Socket for 11 pin plug-in relays C3, C31, C32 and plug-in control modules



**comat**  
**RELECO**  
WORLD OF RELAYS

<b>Type:</b>	<b>C12B0 R</b> 3-pole, 1 level Module slot for timer- and monitoring modules, over voltage suppressing- and LED indicator modules coil bridge bus bar to connect in A2
--------------	---

<b>Rated current</b>	<b>10 A</b>
----------------------	-------------

#### Specifications

Rated load	10 A / 400 V (cURus: 250 V)
Insulation	Test voltage $V_{rms}$ / 1 min
– All terminals/DIN rail	2,5 kV
– Terminal/terminal	2,5 kV
Cross-section of connecting wire	
– Single-wire	1 x 6 mm <sup>2</sup> , 2 x 1,5 mm <sup>2</sup>
– Multi-wire	1 x 4 mm <sup>2</sup> /AWG12, 2 x 1,5 mm <sup>2</sup> /AWG16
Max. screw torque	0.7 Nm
Screw dimensions	M3, Pozi, slot
Labelling space	detachable
Connection label	1...12; DIN/EN
Mounting	DIN rail TS35 or panel mounting 1 x M4
Ambient temperature operation/storage	-25 (no ice)...60 °C / -40 ... 80 °C
Weight	61g

<b>Associated plug-in 11-pin relays</b>	<b>C3, C31, C32</b>
---	---------------------

#### Accessories

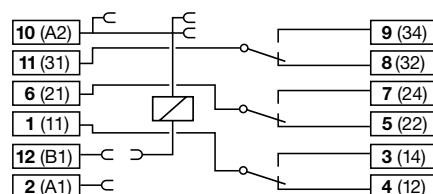
Retaining springs, steel	<b>HF-32</b> (Relays C31, C32) <b>S3-C</b> (Relays C3) <b>S3-CT</b> (Timecube + Relays C3) <b>HF-33</b> (Timecube + Relays C31, C32) <b>C-A2</b> <b>L-16/1</b> (under transp. plastic cover)
Coil bridge bus bar	
Marking strip cardboard white 8 x 16	

#### R-Modul

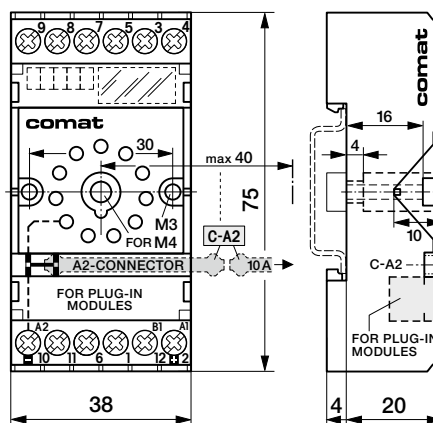
Module LED	RL1/UC 12-24 V RL1/AC 110-240 V
Module freewheeling diode	RD1/DC 12-220 V
Module freewheeling diode + LED	RDL1/DC 12-24 V RDL1/DC 48 V
Module RC-suppressor	RC1/UC 12-48 V RC1/UC 110-240 V
Module RC-suppressor + LED	RCL1/UC 24 V RCL1/UC 48 V RCL1/AC 110-240 V



#### Connection diagram



#### Dimensions [mm]



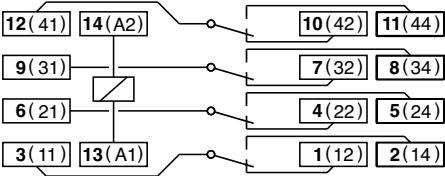
#### Technical approvals, conformities



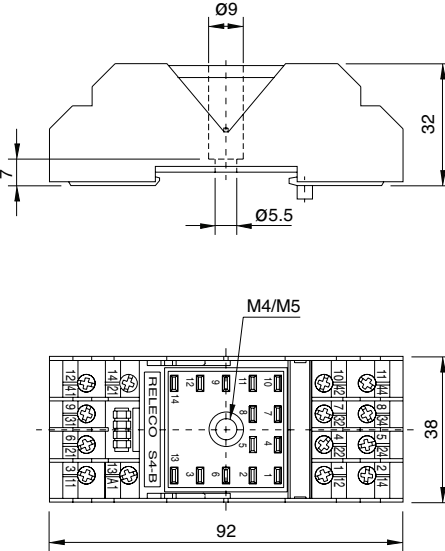
<b>Type</b>	<b>S4-J</b> 4-pole, 2 connection level Logic wiring Integrated retaining clip and labelling space
<b>Rated current</b>	<b>10 A</b>
<b>Specifications</b>	
Rated load	10 A / 250 V
Insulation	Test voltage V rms / 1 min
– All terminals/DIN rail	2,5 kV
– Terminal/terminal	2,5 kV
Cross-section of connecting wire	
– Single-wire	4 mm <sup>2</sup> or 2 x 2,5 mm <sup>2</sup>
– Multi-wire	22 - 14 AWG
Max. screw torque	1 Nm
Screw dimensions	M3,5, Philips-slot (combo)
Integrated retaining clip/plastic	for relay series C4
Labelling space	detachable
Connection label	1...14; DIN/EN
Mounting	DIN rail TS35 or mounting plate
Ambient temperature	-40 (no ice)...60 °C / -40 ... 80 °C
Weight	80g
<b>Associated, plug-in 11-pin MRC relays</b>	<b>C4-A, C4-X, C4-R</b>
<b>Accessories</b>	
Retaining spring, steel	<b>S4-C</b>
Retaining clip, plastic	<b>CP-15B</b>



Connection diagram



Dimensions [mm]



Sockets 4.0

4

Technical approvals, conformities



EN 60947, EN 61810

MRC series  
**S4-L, S4-P, S4-PO**

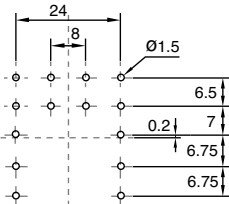


**Socket for soldering and printed circuit for relays C4-...**

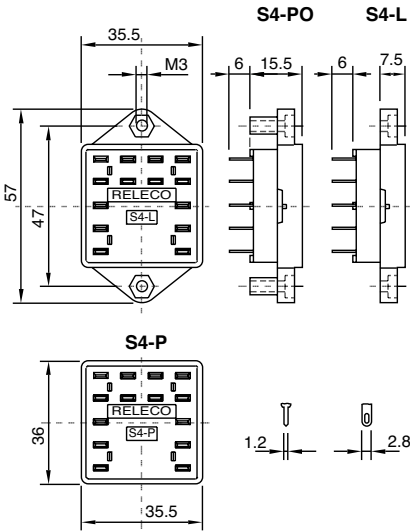
Type	<b>S4-L</b> 4-pole, flange panel mountable
	<b>S4-P</b> 4-pole, printed circuit
	<b>S4-PO</b> 4-pole, printed circuit with flange
Rated current	10 A
<b>Specifications</b>	
Rated load	10 A / 250 V
Test voltage benachbarte Pole	2.5 kV rms 1 min
Ambient temperature	-30 °C ... +60 °C
Weight	21g
<b>Accessories</b>	
Retaining spring, steel	<b>S4-CL</b>



**Printed circuit lay-out [mm]**



**Dimensions [mm]**



**Technical approvals, conformities**



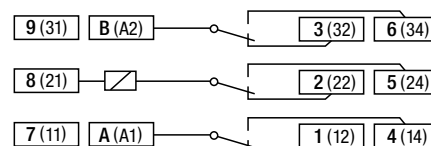
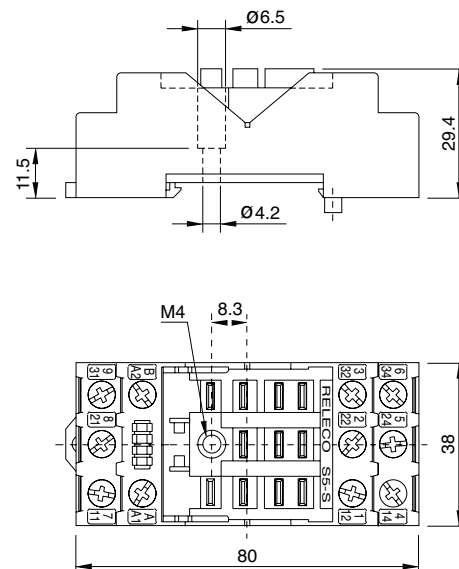
EN 60947-1, EN 61810-1

<b>Type</b>	<b>S5-S</b> 3-pole, 2 level Logic wiring Integrated retaining clip and labelling space
<b>Rated current</b>	<b>16 A</b>
<b>Specifications</b>	
Rated load	16 A / 400 V
Insulation	Test voltage V rms / 1 min
– All terminals/DIN rail	4 kV
– Terminal/terminal	4 kV
Cross-section of connecting wire	
– Single-wire	4 mm <sup>2</sup> or 2 x 2,5 mm <sup>2</sup>
– Multi-wire	22 - 14 AWG
Max. screw torque	1,2 Nm
Screw dimensions	M3,5, Pozi, slot
Integrated retaining clip/plastic	for relay series C5
Labelling space	detachable
Connection label	1...9, A, B; DIN/EN
Mounting	DIN rail TS35 or mounting plate
Ambient temperature operation/storage	-40 (no ice)...60 °C / -40 ... 80 °C
Weight	81g
<b>Associated, plug-in 11-pin MRC relays</b>	<b>C5-A, C5-G, C5-X, C5-M, C5-R</b>
Mounting in DIN rail TS35 or mounting plate. Labelling space. According to EN 60947 and IEC 61810	

**Accessories**

Retaining spring, steel  
Retaining clip, plastic

**S4-C**  
**CP-15B**

**Connection diagram****Dimensions [mm]****Technical approvals, conformities**

EN 60947-1, EN 61810-1

S5-M

Socket for square base relay C5-...

Type:	<b>S5-M</b> 3-pole, 3 level Module slot for timer- and monitoring modules, over voltage suppressing- and LED indicator modules coil bridge bus bar to connect in A2
-------	--

Rated current	<b>16 A</b>
---------------	-------------

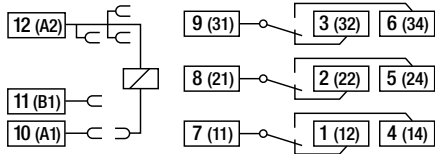
Specifications	
Rated load	16 A / 400 V
Insulation	Test voltage $V_{rms}$ / 1 min
– All terminal/DIN rail	4 kV
– Terminal/terminal	4 kV
Cross section of connecting wire	
– Single wire	1 x 6 mm <sup>2</sup> , 2 x 2,5 mm <sup>2</sup>
– Multi wire	1 x 6 mm <sup>2</sup> /AWG10, 2 x 1,5 mm <sup>2</sup> /AWG16
Max. screw torque	1 Nm
Screw dimensions	M3,5, Pozi, slot
Integrated retaining clip/plastic	for relay series C5
Labelling space	detachable
Connection label	1 ... 12, DIN/EN
Mounting	DIN rail TS35 or panel mounting 1 x M4
Ambient temperature operation / storage	-40 (no ice) ... 60° C/-40 ... 80° C
Weight	92g

Associated, plug-in 11-pin MRC relays	<b>C5-A, C5-G, C5-X, C5-M, C5-R</b>
---------------------------------------	-------------------------------------

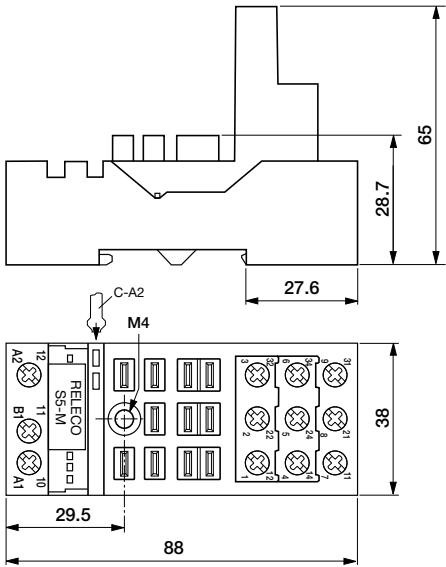
Accessories	
Coil bridge bus bar	<b>C-A2</b>
Retaining clip, plastic	<b>S5MCP</b>



Connection diagram



Dimensions [mm]



Technical approvals, conformities



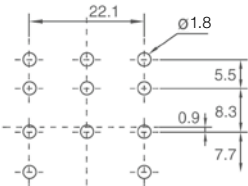
**S5-L, S5-P, S5-PO**

**Socket for soldering and printed circuit for relays C5-...**

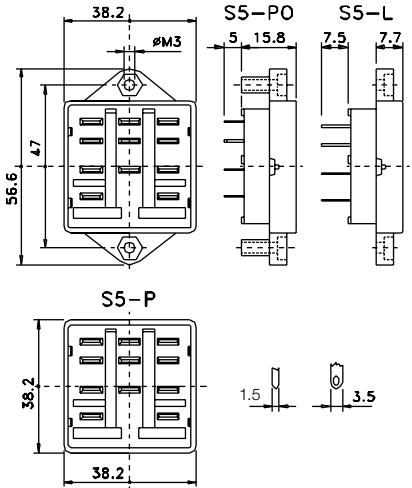
<b>Type</b>	<b>S5-L</b> 3-pole, flange panel mountable
	<b>S5-P</b> 3-pole, printed circuit
	<b>S5-PO</b> 3-pole, printed circuit with flange
<b>Rated current</b>	<b>16 A</b>
<b>Specifications</b>	
Rated load	16 A / 400 V (UL: 300 V)
Ambient temperature operation/storage	-40 (no ice)...60 °C / -40 ... 80 °C
Weight	20g
<b>Accessories</b>	
Retaining spring, steel	<b>S4-CL</b>



**Printed circuit lay-out [mm]**



**Dimensions [mm]**



**Technical approvals, conformities**



EN 60947-1, EN 61810-1

S7-C

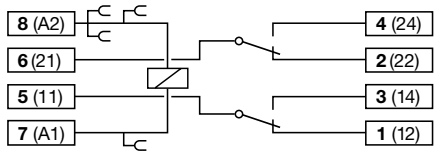
Socket for miniature relays C7-... and C80 series time relays

Type:	<b>S7-C</b> 2-pole, 1 level integrated clip and marking label suitable for clips C80 series time relays coil bridge bus bar to connect in A2 plug-in slot for overvoltage suppressing units
Rated current	<b>10 A</b>
Specifications	
Rated load	10 A / 250 V
Insulation	Test voltage Vrms / 1 min
– All terminal/DIN rail	2.5 kV
– Terminal/terminal	2.5 kV
Cross section of connecting wire	
– Single wire	4 mm <sup>2</sup> , 2 x 1,5 mm <sup>2</sup>
– Multi wire	2,5 mm <sup>2</sup> / AWG 16, 2 x 1 mm <sup>2</sup> / AWG 18
Max. screw torque	0.7 Nm
Screw dimensions	M3, Pozi, slot
Integrated retaining clip/plastic	for relays C7
Labelling space	detachable
Connection label	1 ... 8, DIN/EN
Mounting	DIN rail TS35 or mounting plate
Ambient temperature operation/storage	-40 (no ice) ... 60 °C / -40 ... 80 °C
Weight	37g
Associated plug-in 8-pin QRC relays	<b>C7-A2x, C7-T, C7-G, C7-X, C7-W, C7-H</b>
Associated C80 time relays	<b>C83, C85, 84</b>
Accessories	
Coil bridge bus bar	<b>S7-BB</b>
Retaining clip, plastic	<b>CP-07B</b>

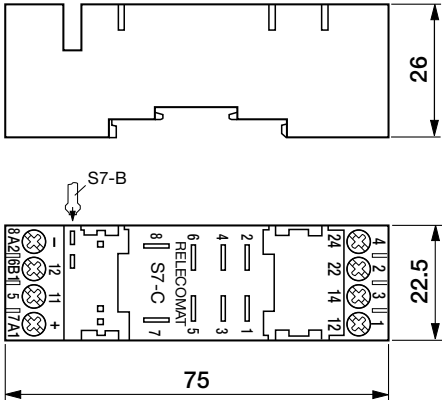
**Please note:**  
This socket replaces former socket S7-M  
fully compatible



Connection diagram



Dimensions [mm]

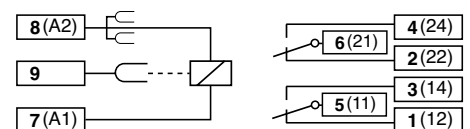
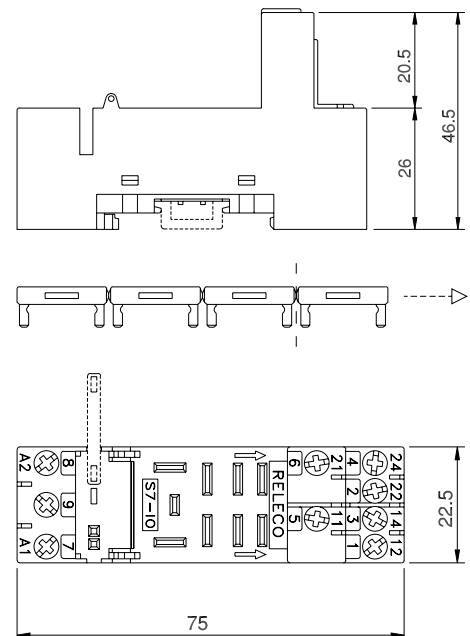


Technical approvals, conformities





<b>Type</b>	<b>S7-I/O</b> 2-pole, 2 level Integrated clip and marking label Coil bridge bus bar to connect in A2 Logic wiring
<b>Rated current</b>	<b>10 A</b>
<b>Specifications</b>	
Rated load	10 A / 250 V
Insulation	Test voltage V rms / 1 min
– All terminals/DIN rail	2,5 kV
– Terminal/terminal	2,5 kV
Cross-section of connecting wire	
– Single-wire	4 mm <sup>2</sup> or 2 x 2,5 mm <sup>2</sup>
– Multi-wire	22 - 14 AWG
Max. screw torque	0.7 Nm
Screw dimensions	M3, Pozi, slot
Integrated retaining clip/plastic	for relay series C7
Labelling space	detachable
Connection label	1...8; DIN/EN
Mounting	DIN rail TS35 or mounting plate
Ambient temperature operation/storage	-40 (no ice)...60 °C / -40 ... 80 °C
Weight	38g
<b>Associated, plug-in 8-pin QRC relays</b>	<b>C7-A2x, C7-T, C7-G, C7-X, C7-W, C7-H</b>
<b>Accessories</b>	
Coil bridge bus bar	<b>S7-BB</b>
Retaining clip, plastic	<b>CP-01B</b>

**Connection diagram****Dimensions [mm]**

Sockets 4.0

**Technical approvals, conformities**

EN 60947-1, EN 61810-1

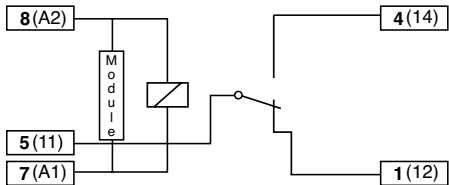
S7-16

Socket for miniature relays C7-A10...

Type	<b>S7-16</b> 1-pole, 1 level Integrated retaining clip and labelling space
Rated current	<b>16 A</b>
Specifications	<div><div>Rated load</div><div>Insulation</div><div>– All terminals/DIN rail</div><div>– Terminal/terminal</div><div>Cross-section of connecting wire</div><div>– Single-wire</div><div>– Multi-wire</div><div>Max. screw torque</div><div>Screw dimensions</div><div>Integrated retaining clip/plastic</div><div>Labelling space</div><div>Connection label</div><div>Mounting</div><div>Ambient temperature operation/storage</div><div>Weight</div></div> <div><div>16 A / 250 V</div><div>Test voltage V rms / 1 min</div><div>2,5 kV</div><div>2,5 kV</div><div>4 mm<sup>2</sup> or 2 x 2,5 mm<sup>2</sup></div><div>22 - 14 AWG</div><div>0.7 Nm</div><div>M3, Pozi, slot</div><div>for relay series C7-A10</div><div>detachable</div><div>1...8; DIN/EN</div><div>DIN rail TS35 or mounting plate</div><div>-40 (no ice)...60 °C / -40 ... 80 °C</div><div>31g</div></div>
Associated, plug-in 5-pin QRC relays	<b>C7-A10</b>
Accessories	<div><div>Retaining clip, plastic</div><div><b>CP-07B</b></div></div>

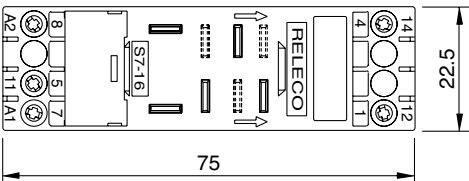
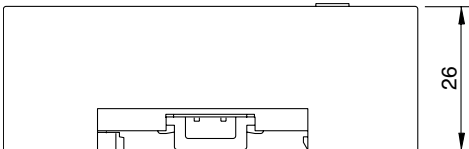


Connection diagram



Dimensions [mm]

S7-16 for relays C7-A10 (16 A)



Technical approvals, conformities



EN 60947-1, EN 61810-1

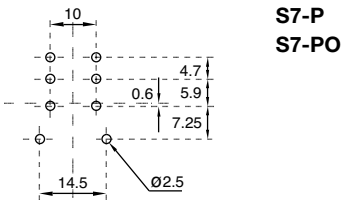
S7-L, S7-P, S7-PO

Socket for PCB and soldering for miniature relays C7

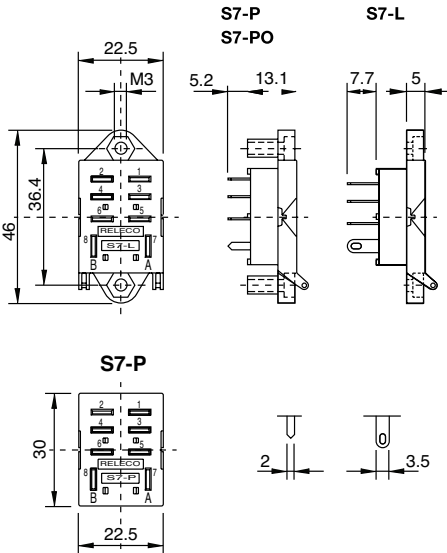
Type	<b>S7-L</b> 2-pole, flange panel mountable
	<b>S7-P</b> 2-pole, printed circuit
	<b>S7-PO</b> 2-pole, printed circuit with flange
Rated current	10 A
<b>Specifications</b>	
Rated load	10 A / 250 V
Dielectric strength adjacent pin	2.5 kV rms / 1 min
Connection label	1...8; DIN/EN
Integrated retaining clip/plastic	for relay series C7 S7-P: (CP-07B) S7-L + S7-PO: (CP-01B)
Ambient temperature operation/storage	-40 (no ice)....60 °C /-40 ... 80 °C
Weight	10g
<b>Accessories</b>	
Retaining clip, plastic for S7-P	<b>CP-07B</b>
Retaining clip, plastic for S7-L + S7-PO	<b>CP-01B</b>



Printed circuit lay-out [mm]



Dimensions [mm]



Technical approvals, conformities

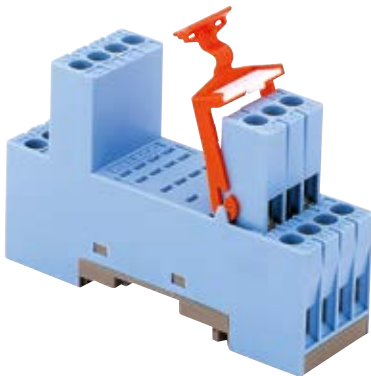


EN 60947-1, EN 61810-1

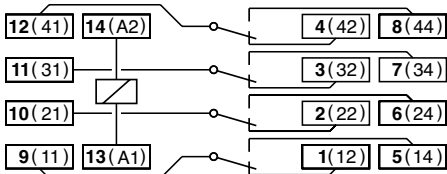
S9-M

Socket for miniature 4 pole relay C9-...

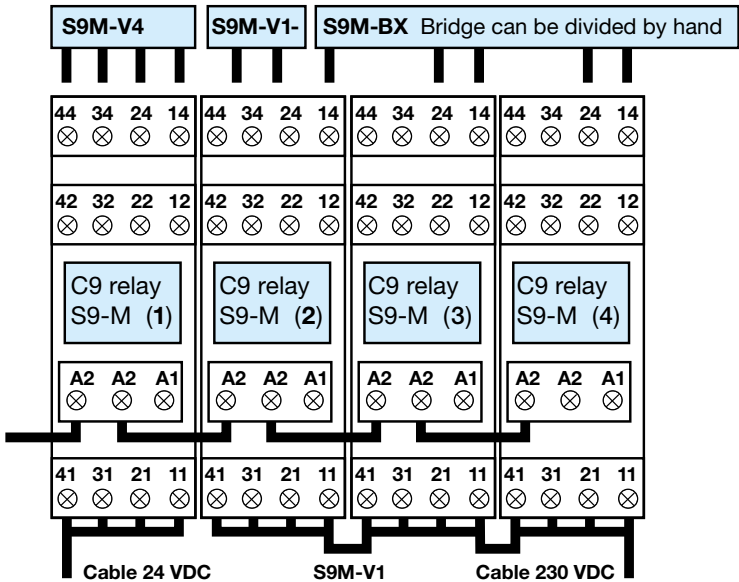
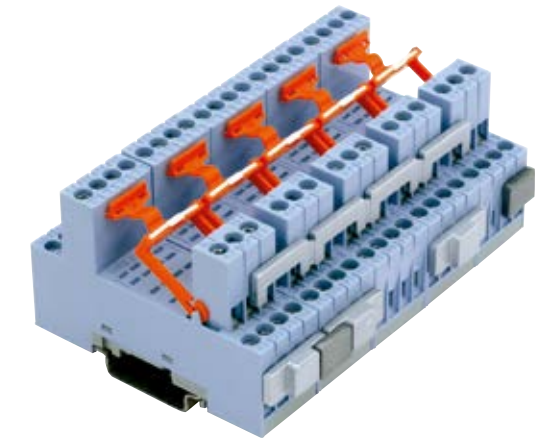
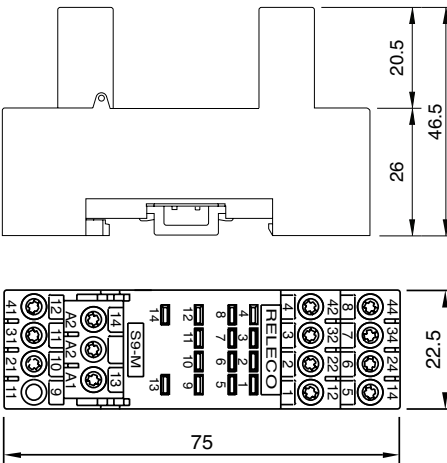
Type	S9-M 4-pole, 2 level Integrated clip and marking label
Rated current	6 A
Specifications	<div><div>Rated load</div><div>Insulation</div><div>– All terminals/DIN rail</div><div>– Terminal/terminal</div><div>Cross-section of connecting wire</div><div>– Single-wire</div><div>– Multi-wire</div><div>Max. screw torque</div><div>Screw dimensions</div><div>Integrated retaining clip/plastic</div><div>Labelling space</div><div>Connection label</div><div>Mounting</div><div>Ambient temperature operation/storage</div><div>Weight</div></div> <div><div>6 A / 250 V</div><div>Test voltage V rms / 1 min</div><div>2,5 kV</div><div>2,5 kV</div><div>4 mm<sup>2</sup> or 2 x 2,5 mm<sup>2</sup></div><div>22 - 14 AWG</div><div>0.7 Nm</div><div>M3, Pozzi, slot</div><div>for relay series C9 (CP-01B)</div><div>detachable</div><div>1...14; DIN/EN</div><div>DIN rail TS35 or mounting plate</div><div>-40 (no ice)...60 °C / -40 ... 80 °C</div><div>54g</div></div>
Socket for 4 poles, QRC relays	C9-A, C9-E, C9-R
Accessories	Retaining clip, plastic CP-01B



Connection diagram



Dimensions [mm]

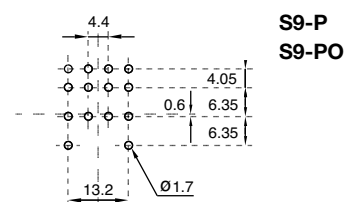
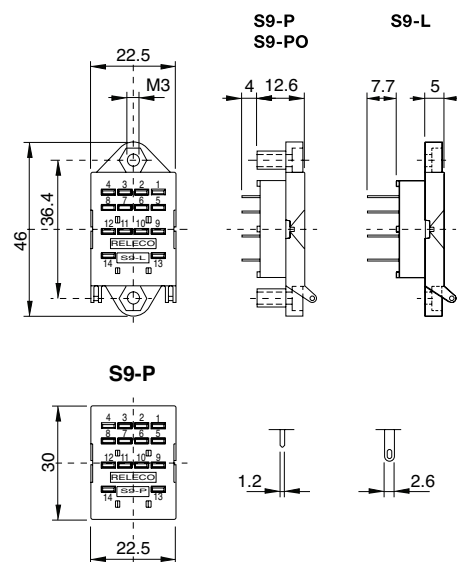


Technical approvals, conformities



EN 60947-1, EN 61810-1

<b>Type</b>	<b>S9-L</b> 4-pole, flange panel mountable
	<b>S9-P</b> 4-pole, printed circuit
	<b>S9-PO</b> 4-pole, printed circuit with flange
<b>Rated current</b>	<b>6 A</b>
<b>Specifications</b>	
Rated load	6 A / 250 V
Dielectric strength adjacent pin	2.5 kV rms / 1 min
Connection label	1...14; DIN/EN
Integrated retaining clip/plastic	for relay series C9
Ambient temperature operation/storage	S9-P: (CP-07B) S9-L + S9-PO: (CP-01B) -40 (no ice)....60 °C / -40 ... 80 °C
Weight	12g
<b>Accessories</b>	
Retaining clip, plastic for S9-P	<b>CP-07B</b>
Retaining clip, plastic for S9-L + S9-PO	<b>CP-01B</b>

**Printed circuit lay-out [mm]****Dimensions [mm]****Technical approvals, conformities**

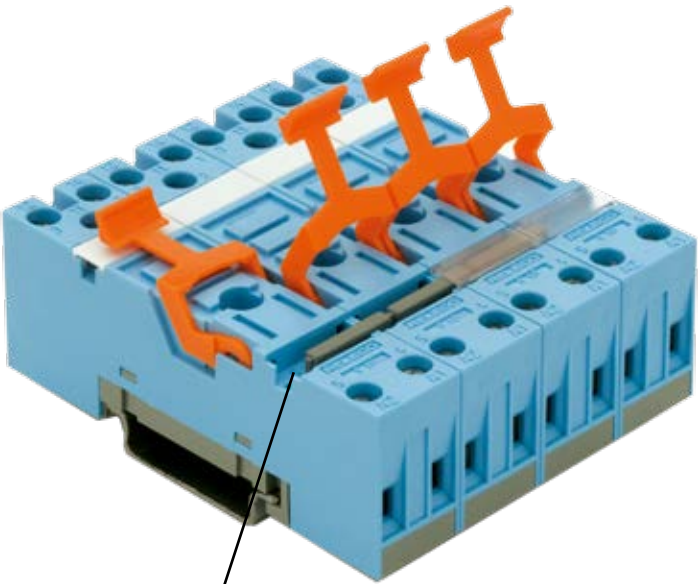
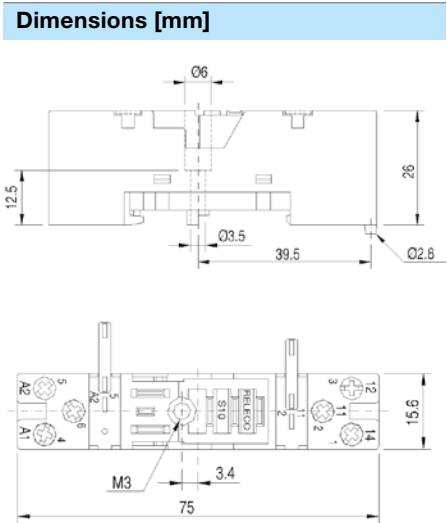
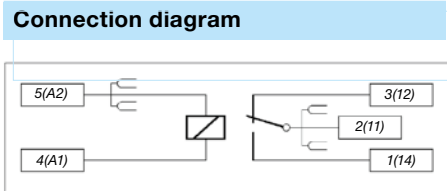
Lloyd's



EN 60947-1, EN 61810-1

Type	<b>S10</b> 1-pole, 1 connection level Logic wiring Integrated retaining clip and labelling space Coil bridge bar for A2, 11
Rated current	<b>10 A</b>
Specifications	<div>Rated load10 A / 250 V</div> <div>InsulationTest voltage V rms / 1 min5 kV</div> <div>– All terminals/DIN rail5 kV</div> <div>Contact terminals2,5 kV</div> <div>Contact / Coil terminals5 kV</div> <div>Cross-section of connecting wire</div> <div>– Single-wire4 mm² or 2 x 2,5 mm²</div> <div>– Multi-wire22 - 14 AWG</div> <div>Max. screw torque0.7 Nm</div> <div>Screw dimensionsM3, Pozi, slot</div> <div>Integrated retaining clip/plasticfor relay series C10, CSS (CP-17B)</div> <div>Labelling spacedetachable</div> <div>Connection label1...5; DIN/EN</div> <div>MountingDIN rail TS35 or mounting plate</div> <div>Ambient temperature operation/storage-40 (no ice)....60 °C /-40 ... 80 °C</div> <div>Weight23g</div>
Socket for plug-in 10A IRC relays	<b>C10-A, C10-T, CSS, C10-G</b>

Accessories	<b>S10-BB</b>
Coil bridge bars	<b>CP-17B</b>
Retaining clip, plastic	



BRIDGE BAR

**Technical approvals, conformities**

EN 60947-1, EN 61810-1

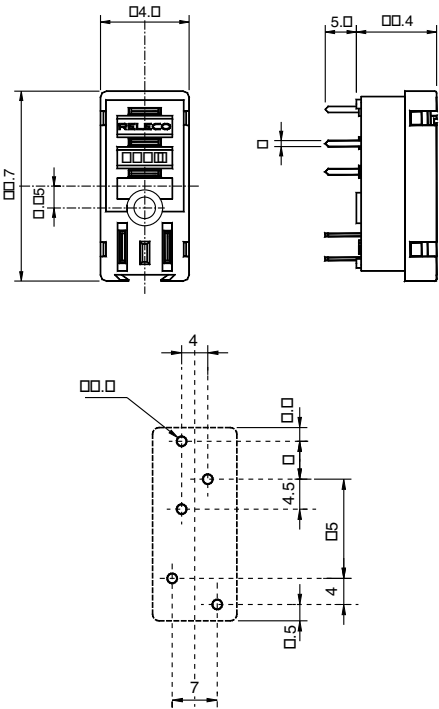
S10-P

Printed circuit socket for Interface relays, C10 and CSS

Type:	<b>S10-P</b> Printed circuit socket for 1-pole IRC relay
Rated current	<b>10 A</b>
Specifications	
Rated load	10 A / 250 V
Insulation	Test voltage V rms / 1 min
Coil terminals to contacts	5 kV rms
Hard Brass tin-platted terminals	0,5 x 1 mm
Integrated retaining clip/plastic	for relay series C10, CSS (CP-24B)
Labelling space	detachable
Connection label	1...5; DIN/EN
Ambient temperature operation/storage	-40 (no ice)...60 °C / -40 ... 80 °C
Weight	7g
Accessories	
Retaining clip, plastic	<b>CP-24B</b>



Dimensions [mm]



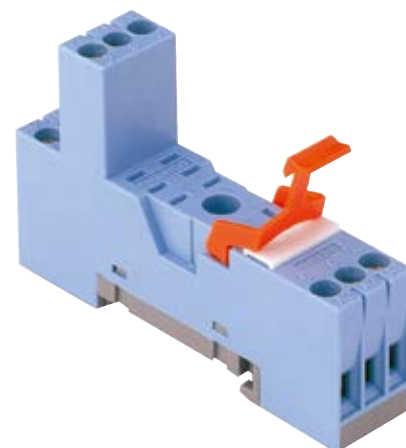
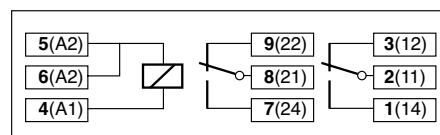
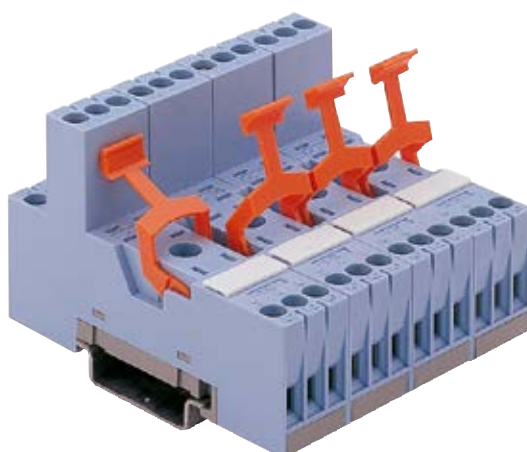
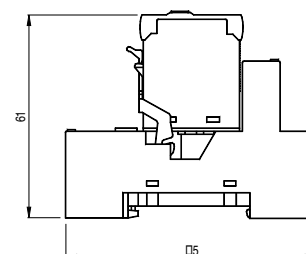
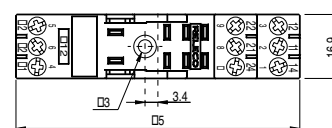
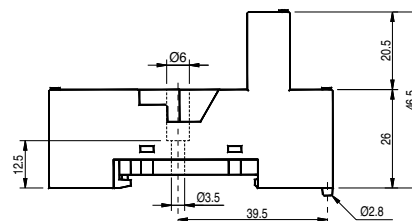
Technical approvals, conformities



IEC 61810 EN 60947

**Socket for Interface relay**

<b>Type</b>	<b>S12</b> I/O socket for C12 relays with 2 x CO Logic connection , 5 A
<b>Rated current</b>	<b>5 A</b>
<b>Specifications</b>	
Rated load	5 A / 250 V
Insulation	Test voltage V rms / 1 min
– All terminals/DIN rail	5 kV
Contacts terminals	2,5 kV
Contacts / Coil terminals	5 kV
Cross-section of connecting wire	
– Single-wire	4 mm <sup>2</sup> or 2 x 2,5 mm <sup>2</sup>
– Multi-wire	22 - 14 AWG
Max. screw torque	0.7 Nm
Screw dimensions	M3, Pozi, slot
Integrated retaining clip/plastic	for relay series C12 (CP-17B)
Labelling space	detachable
Connection label	1...9; DIN/EN
Mounting	DIN rail TS35 or mounting plate
Ambient temperature operation/storage	-40 (no ice)...60 °C / -40 ... 80 °C
Weight	31g
<b>Socket for IRC relays</b>	<b>C12, C12G</b>
<b>Accessories</b>	
Coil bridge bars	<b>V10-G, V40-G, V10-R, V40-R, V10-A, V40-A</b>
Retaining clip, plastic	<b>B20-G, B20-R, B20-A, CP-07B</b> <b>CP-17B</b>

**Connection diagram****Dimensions [mm]****Technical approvals, conformities**

IEC 61810 EN 60947



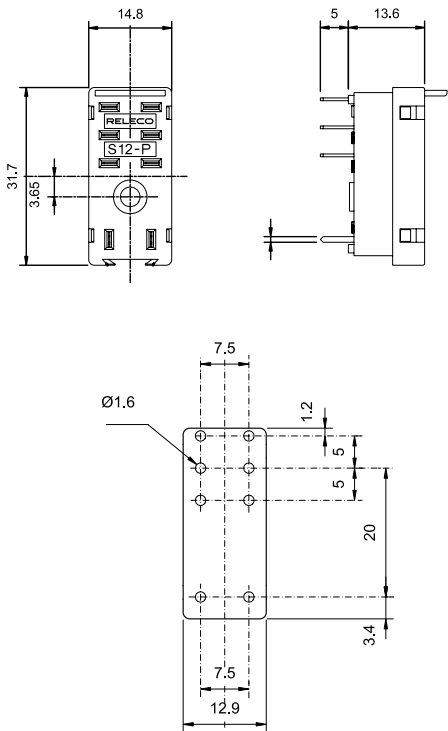
S12-P

Printed circuit socket for Interface relays, C12

Type:	<b>S12-P</b> Printed circuit socket for 2-pole C12 relay
Rated current	<b>5 A</b>
<b>Specifications</b>	
Rated load	5 A / 250 V
Insulation	Test voltage V rms / 1 min
– Pole / Pole	3 kV
– Coil / contact terminals	5 kV
Hard brass tin-plated terminals	0,5 x 1 mm
Weight	7g
Integrated retaining clip/plastic	for relay series C12, (CP-24B)
<b>Accessories</b>	
Retaining clip, plastic	<b>CP-24B</b>



Dimensions [mm]



Technical approvals, conformities



IEC 61810 EN 60947