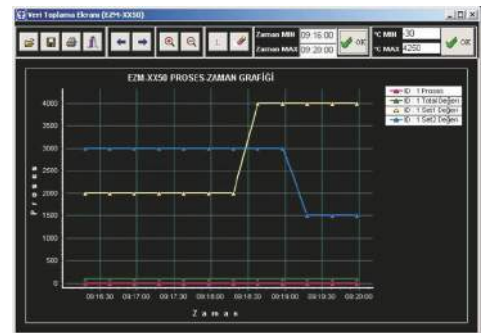
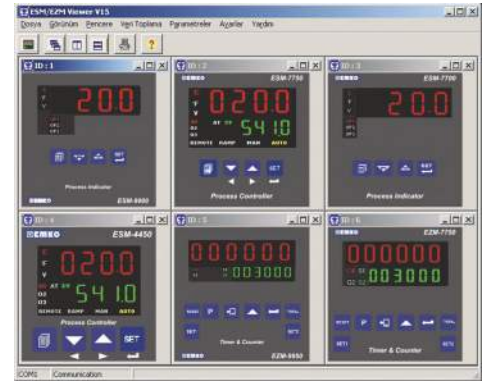


Viewer Data Logging Software



- Monitoring up to 32 devices at the same time on the screen
- Data of Process, Output, Alarm and Status
- Real-time graphic support
- Data types selection for monitoring
- Visual alarm set and monitoring
- Data logging as Text or Excel files
- Compatible with Windows Operating Systems
- Saving device parameters, download and upload
- Turkish and English language selection
- Selectable communication ports between COM1...COM9
- ModBus RTU communication protocol
- RS-485 or RS-232 connection
- Adjustable data logging interval
- Stop or pause of data logging
- Total counting monitoring for timer and counter controllers
- Export a Text or Excel file with determined frequency and file name
- Password protection for parameter selections



Usage of the Software:

When the program runs for the first time, com port settings must be done. There is no need to do the com port setting if there is no fault or changes.

Data Logging:

Data logging is done for 32 units. For ESM-XX50 series units; process value, set value, 2nd sensor value (if exists), for ESM-XX00 series units process value, for EZM-XX50 series units process value, set1 value, set2 value, total value (If the unit operates in totalizer counter mode) can be selected to log. Logged datas are saved into an excel or text formatted file. While data logging continues, logged data are shown on data logging graphic screen for 10 units.