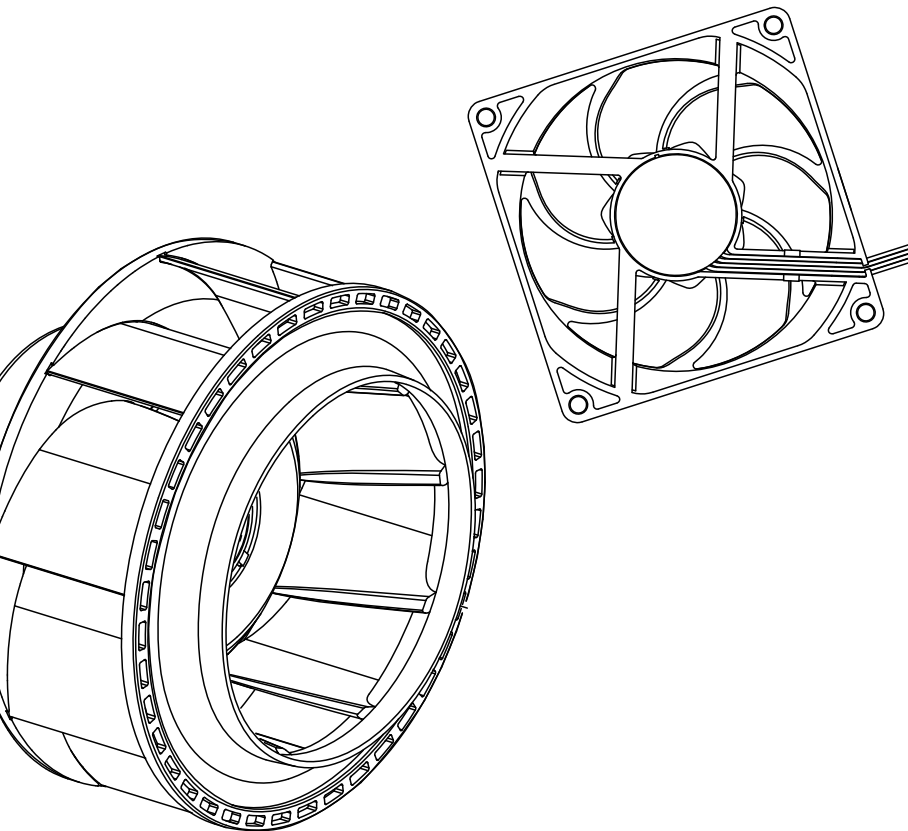


San Ace

Cooling Systems

Handy Catalog



DISAI SANYODENKI
Automatic Systems

T-962 448 450 www.disai.net

San Ace Cooling Systems

DC Fanpp. 12 to 24

Cooling fan operating at 5 V, 12 V, 24 V, and 48 VDC.
Wide lineup including low power consumption fans, silent fans,
and high airflow and high static pressure fans
36 mm sq. to ϕ 200 mm



Counter Rotating Fanpp. 24 to 26

Airflow and static pressure become higher than two conventional
products of the same size connected in a series
38 mm sq. to ϕ 172 mm



Reversible Flow Fanp. 27

The wind directions can be switched with these fans. Equivalent
cooling performance can be obtained in both directions.
 ϕ 92 mm, ϕ 136 mm



Splash Proof Fanpp. 27 to 30

Cooling fan of IP54, IP55 and IP68 waterproof capability
40 mm sq. to ϕ 172 mm



Splash Proof Centrifugal Fanpp. 31 to 32

Centrifugal fans of IP54 and IP56 waterproof capability.
 ϕ 100 mm to 270 mm sq.



Splash Proof Blowerp. 32

This fan specializes in high static pressure and has IP68-rated water
resistance.
97 mm



Oil Proof Fanpp. 33 to 34

Cooling fan capable of operating in an oil-mist environment
40 mm sq. to 120 mm sq.



Long Life Fanpp. 35 to 37

Cooling fan with Max. 180,000 hours of expected life
40 mm sq. to ϕ 172 mm



Wide Temperature Range Fanp. 38

Wide Temperature Range Fan with Industry-leading -40 to $+85^{\circ}\text{C}$
Operating Temperature Range
40 mm sq. to 120 mm sq.



G Proof Fanp. 39

These fans are suitable for cooling CT scanners and other devices
subject to high G-force or vibration.
120 mm sq., ϕ 172 mm



Centrifugal Fanpp. 40 to 41

Cooling fan blows air in a centrifugal course.
It features high static pressure.
 ϕ 70 mm to 270 mm sq.



Blower

.....pp. 42 to 43

Cooling fan specialized for high static pressure
52 mm to 160 mm



ACDC Fan

.....pp. 44 to 45

This fan works while internally converting AC power into DC power,
providing the superior performance of a DC fan with the flexibility of AC input.
92 mm sq. to 270 mm sq.



AC Fan

.....pp. 46 to 49

The cooling fan operates at 100 to 230 VAC.
60 mm sq. to ϕ 172 mm





Only the 9CT1-U001 model is cUL-certified.



This IoT-enabled product offers automatic speed control and remote monitoring of fans. It enables preventive maintenance of equipment (IoT functionality), more efficient and quieter fan operation (automatic control), and optimized fan settings (manual control).

	With wireless LAN	Without wireless LAN	With wireless LAN, cUL certified
Model no.	9CT1-001	9CT1-002	9CT1-U001 ⁽¹⁾
Rated voltage [VDC]	12/24/48		12/24
Power consumption [W]	3.1 ⁽²⁾		
Max. input power	970 W or less		64 W or less (At 12 VDC) 100 W or less (At 24 VDC)
Operating voltage range [VDC]	7 to 60		7 to 27.6
Operating temperature range [°C]	-20 to +70		
Control functions	Manual / automatic		
Control signal	PWM signal High-level voltage (V _{OH}): 3.3/5 V Frequency: 25 kHz		
Monitoring criteria	Fan speed, fan current, fan operation hours, sensor detection value, external input		
No. of connectable fans	Max. 4		
Max. fan connection terminal current (per terminal)	5 A		5 A (At 12 VDC) 4 A (At 24 VDC)
Max. output current (Total)	20 A		5 A (At 12 VDC) 4 A (At 24 VDC)
No. of connectable sensors	Max. 4		
Compatible sensors ⁽³⁾	Temperature / humidity, air pressure, acceleration		
External I/O functions	Input	Photocoupler-isolated input, ON: 15 to 28.8 VDC, OFF: 0 to 5 VDC	
	Output	Photocoupler-isolated open-collector output, load voltage: 28.8 VDC or less, output current: 0.1 A or less	
Communication	Wireless	IEEE 802.11b/g/n, frequency: 2.4 GHz ⁽⁴⁾	IEEE 802.11b/g/n, frequency: 2.4 GHz ⁽⁴⁾
	Wired	Ethernet 10BASE-T, 100BASE-TX	
Size [mm]	50 (W) × 135 (D) × 180 (H)		
Mass [g]	450		
Material	Casing: Plastic		

(1) Use a UL Class 2 power supply. (2) For use of this product alone, at 20°C ambient temperature

(3) Use our dedicated sensors (options). (4) Available channels: Ch. 1 to 11

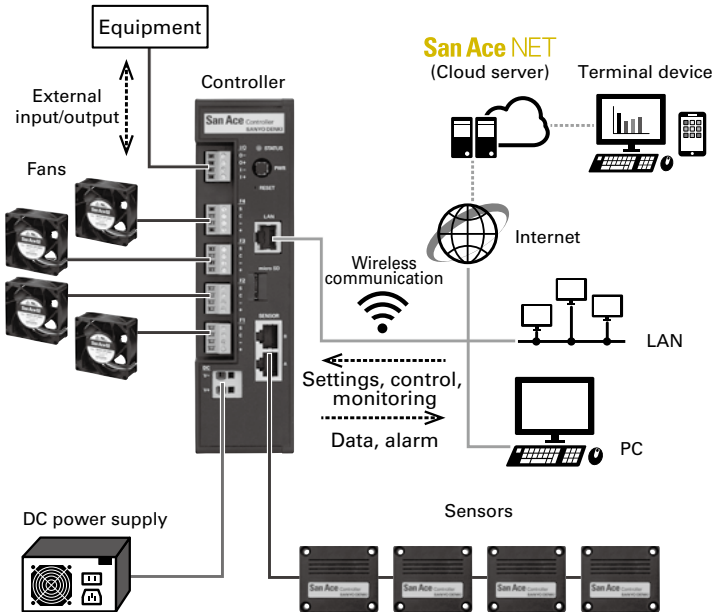
Options
Sensors



Sensor type	Temperature / Humidity sensor	Air pressure sensor	Accelerometer
Model no.	9CT1-T	9CT1-P	9CT1-A
Measurement range	Temperature: -20 to +70°C Humidity: 20 to 85% RH ⁽¹⁾	Air pressure: 800 to 1100 hPa	Acceleration: 0 to 60 m/s ² ⁽²⁾
Operating temperature range [°C]	-20 to +70		
Operating humidity range [% RH]	20 to 85 ⁽¹⁾		
Size [mm]	53 (W) × 46 (D) × 22 (H)		
Mass [g]	35		
Material	Casing: Plastic		

(1) Non-condensing (2) Total acceleration from three axes

Wiring Diagram





Box type

This device make it possible to control the rotational speed of fans that have the PWM control function, which contributes to reducing the system power consumption and the fan noise.

■ Box type

Model no.	9PC8666X-S001	9PC8666X-S101
Size [mm]	86 (H)×66 (W)×38 (D)	
Rated voltage [V]	12/24/48	
Power consumption [W]	0.2 ⁽¹⁾	
Operating temperature [°C]	-20 to +70	
Input terminal	Input voltage range [V] (V+, V-)	7 to 60
	Control voltage range [V]	0 to 5.5
Output terminal	PWM signal output	V _{OH} (high level voltage): 3.3 or 5 VDC selectable
	PWM frequency [kHz]	25 1
	Output current	20 mA max. (total sum of 4 terminals)
	Output breakdown voltage [V]	6.5
	No. of connectable fans	Up to 4 fans
Control functions ⁽²⁾	Voltage control, Internal adjustment (variable resistor) control, External adjustment (variable resistor) control ⁽³⁾ , Thermistor control ⁽³⁾	
Mounting method	DIN rail mounting or screw mounting	
Mass [g]	110	
Material	Case: Plastic	

(1) When output terminals are turned on. (2) Control functions are mutually exclusive for Box type.

(3) Variable resistor and thermistor are not supplied with the controller and need to be prepared separately.

Note: Be noted that if applied input voltage or frequency is out of range of the connected fan, how the fan speed responds to the PWM duty cycle may be altered.



PCB type

■ PCB type

Model no.		9PC8045D-V001	9PC8045D-R001	9PC8045D-T001
Size [mm]		80 (H)×45 (W)×17 (D)		
Rated voltage [V]		12/24/48		
Power consumption [W]		0.2 ⁽¹⁾		
Operating temperature [°C]		-20 to +70		
Input terminal	Input voltage range [V] (V+, V-)	7 to 60		
	Control voltage range [V]	0 to 5.5		
Output terminal	PWM signal output	V _{OH} (high level voltage): 3.3 or 5 VDC selectable		
	PWM frequency [kHz]	25		
	Output current	20 mA max. (total sum of 4 terminals)		
	Output breakdown voltage [V]	6.5		
No. of connectable fans		Up to 4 fans		
Control functions		Voltage control	Variable resistor control ⁽²⁾	Thermistor control ⁽²⁾
Mounting method		Screw mounting		
Mass [g]		27		
Material		PCB: FR-4		

Model no.		9PC8045D-V101	9PC8045D-R101	9PC8045D-T101
Size [mm]		80 (H)×45 (W)×17 (D)		
Rated voltage [V]		12/24/48		
Power consumption [W]		0.2 ⁽¹⁾		
Operating temperature [°C]		-20 to +70		
Input terminal	Input voltage range [V] (V+, V-)	7 to 60		
	Control voltage range [V]	0 to 5.5		
Output terminal	PWM signal output	V _{OH} (high level voltage): 3.3 or 5 VDC selectable		
	PWM frequency [kHz]	1		
	Output current	20 mA max. (total sum of 4 terminals)		
	Output breakdown voltage [V]	6.5		
No. of connectable fans		Up to 4 fans		
Control functions		Voltage control	Variable resistor control ⁽²⁾	Thermistor control ⁽²⁾
Mounting method		Screw mounting		
Mass [g]		27		
Material		PCB: FR-4		

(1) When output terminals are turned on.

(2) Variable resistor and thermistor are not supplied with the controller and need to be prepared separately.

Note: Be noted that if applied input voltage or frequency is out of range of the connected fan, how the fan speed responds to the PWM duty cycle may be altered.



With connection duct mounted

This product is a portable measuring device that enables you to easily measure the system impedance and operating airflow of devices.

Model no.		9AT2560S-000□ ⁽¹⁾	9AT2560A-000□ ⁽¹⁾	9AT2560C-000□ ⁽¹⁾
Measurement units	Airflow	m ³ /min	CFM	CFM
	Static pressure	Pa	inchH ₂ O	Pa
Measurement range	Airflow	0.20 to 8.00 m ³ /min	7 to 282 CFM	7 to 282 CFM
	Static pressure	0 to 1000 Pa	0 to 4.01 inchH ₂ O	0 to 1000 Pa
Measurement accuracy	Airflow	±7% of maximum measurable airflow with each nozzle		
	Static pressure	±10 Pa (0.04 inchH ₂ O) for measurement results < 200 Pa, ±50 Pa (0.20 inchH ₂ O) for measurement results ≥ 200 Pa		
Operating environment	Ambient temperature	0 to 40 °C		
	Humidity	20 to 85% RH (non-condensing)		
Display	Data no., Measurement values (airflow, static pressure ⁽²⁾), Measurement status, Nozzle selection, Measurement mode selection			
Interface	Digital output: Included USB serial adapter			
Power supply	Input voltage	100 to 240 VAC, 50/60 Hz		
	Power consumption	260 VA max.		
Dimensions	600 (W) × 250 (H) × 250 (D) mm			
Mass	Main unit: Approx. 6 kg, Connection duct (including board holder): Approx. 1.5 kg			
Included peripherals	1 Set of measurement nozzles, Plastic mounting board (5 pcs / set), Connection duct, AC power cable (2.5 m), USB serial adapter, Instruction manual, Quick start guide, Data viewer software			

(1) The AC power plug shape differs with the number in □ of model numbers.

AC power plug included in models with 1 in □ is for Japan and North America regions (2 parallel flat pins + a round grounding pin), Input voltage: 100/120 VAC, 50/60 Hz

AC power plug included in models with 2 in □ is for Europe region (2 round pins + a female grounding contact), Input voltage: 220 VAC, 50 Hz

AC power plug included in models with 3 in □ is for China region (2 angled flat pins + a flat grounding pin),

Input voltage: 220 VAC, 50 Hz

Product also available without an AC power cable. Model no. 9AT2560S-0000, 9AT2560A-0000, 9AT2560C-0000

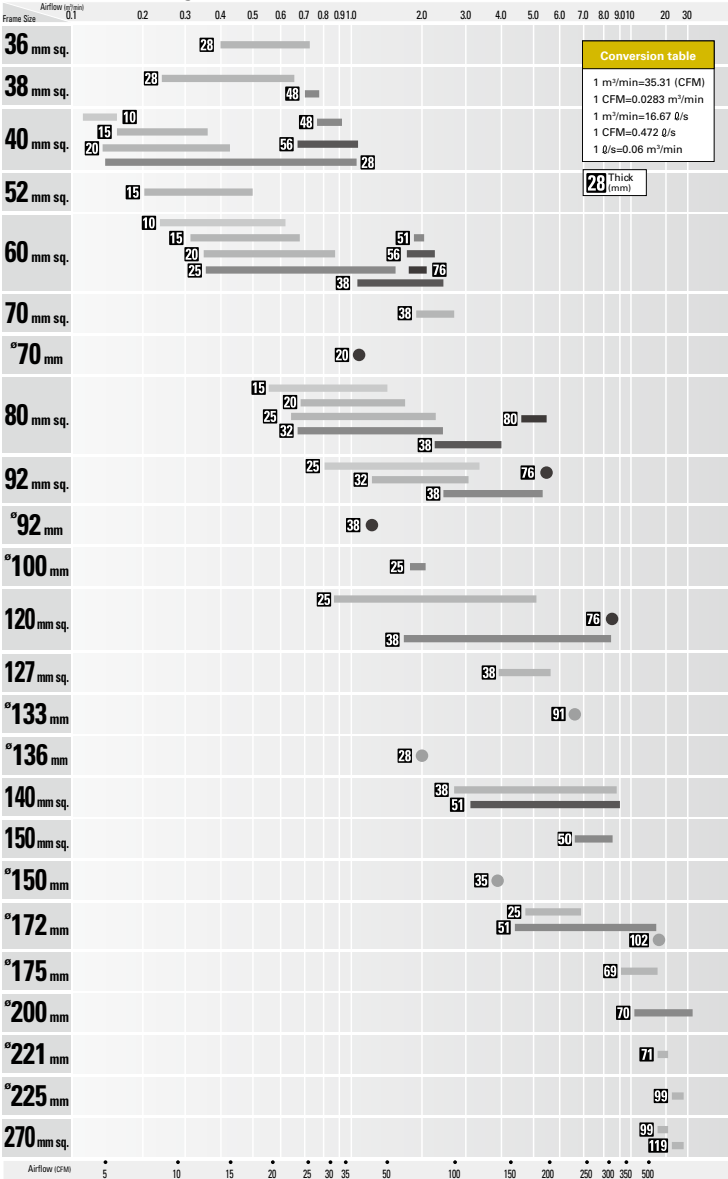
(2) Static pressure values are calculated with standard atmosphere as 1013 hPa at 20 °C.

Examples of Custom-Built Cooling Fan Units



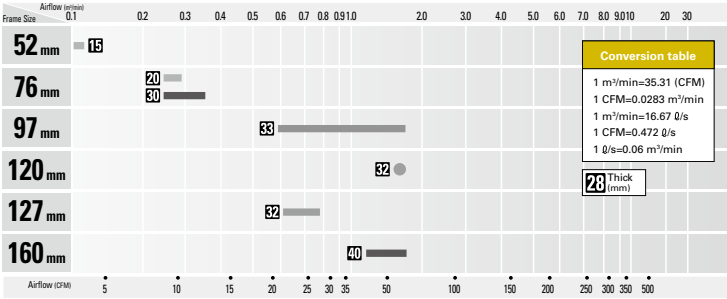
- We build cooling systems that are most suitable for the client's purposes. The unit includes a range of cooling fans that are optimally adjusted according to the situation and a custom-made fan unit.
- In addition, we design and develop fan units that are optimally suited to the client's requirements.

DC Fan Domain Diagram

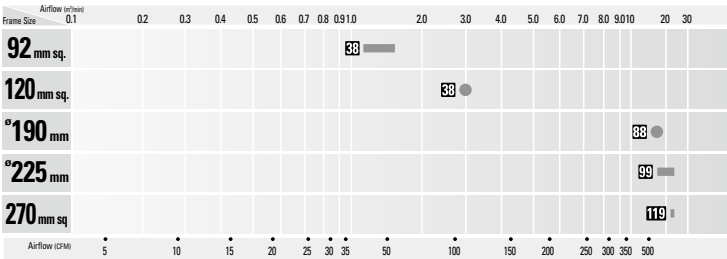


Listed are the Model Number excerpts of SanAce Catalog.
 For other line-up and technical documents, please refer to the Catalog.

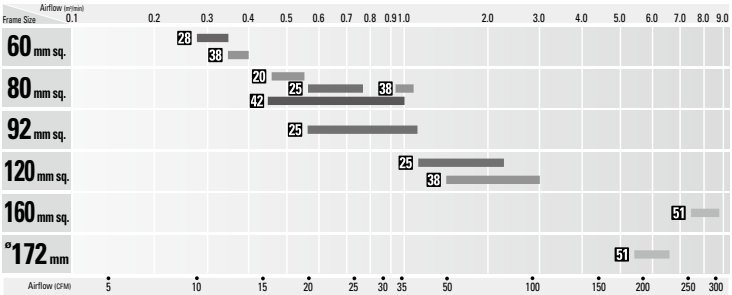
Blower



ACDC Fan Domain Diagram



AC Fan Domain Diagram



Listed are the Model Number excerpts of SanAce Catalog.
For other line-up and technical documents, please refer to the Catalog.

**36×36×28 mm 9HV type**

Model No.	Rated Voltage [V]	Rated Current [A]	Rated Speed [min ⁻¹]	Max. Airflow [m ³ /min] [CFM]	Max. Static Pressure [Pa] [inchH ₂ O]	SPL [dB (A)]
9HV3612P3K001	12	1.75	32500	0.72 25.4	1400 5.62	67

**36×36×28 mm 9GX type**

Model No.	Rated Voltage [V]	Rated Current [A]	Rated Speed [min ⁻¹]	Max. Airflow [m ³ /min] [CFM]	Max. Static Pressure [Pa] [inchH ₂ O]	SPL [dB (A)]
9GX3612P3K001	12	1.3	24000	0.69 24.4	838 3.367	66

**36×36×28 mm 9GV type**

Model No.	Rated Voltage [V]	Rated Current [A]	Rated Speed [min ⁻¹]	Max. Airflow [m ³ /min] [CFM]	Max. Static Pressure [Pa] [inchH ₂ O]	SPL [dB (A)]
9GV3612J301	12	0.75	19000	0.55 19.4	525 2.108	58.5

**Low Power Consumption Fan****38×38×28 mm 9GA type**

Model No.	Rated Voltage [V]	Rated Current [A]	Rated Speed [min ⁻¹]	Max. Airflow [m ³ /min] [CFM]	Max. Static Pressure [Pa] [inchH ₂ O]	SPL [dB (A)]
9GA0312P3K001	12	0.62	25000	0.6 21.2	800 3.21	59.0

**38×38×28 mm 9GV type**

Model No.	Rated Voltage [V]	Rated Current [A]	Rated Speed [min ⁻¹]	Max. Airflow [m ³ /min] [CFM]	Max. Static Pressure [Pa] [inchH ₂ O]	SPL [dB (A)]
9GV0312K301	12	0.79	18200	0.65 23	425 1.707	59

**40×40×10 mm 9P type**

Model No.	Rated Voltage [V]	Rated Current [A]	Rated Speed [min ⁻¹]	Max. Airflow [m ³ /min] [CFM]	Max. Static Pressure [Pa] [inchH ₂ O]	SPL [dB (A)]
109P0405H901	5	0.16	6200	0.15 5.3	41.2 0.165	25
109P0412H901	12	0.07	6200	0.15 5.3	41.2 0.165	25
109P0424H901	24	0.04	6200	0.15 5.3	41.2 0.165	25

**Low Power Consumption Fan****40×40×15 mm 9GA type**

Model No.	Rated Voltage [V]	Rated Current [A]	Rated Speed [min ⁻¹]	Max. Airflow [m ³ /min] [CFM]	Max. Static Pressure [Pa] [inchH ₂ O]	SPL [dB (A)]
9GA0412P7G001	12	0.17	13100	0.36 12.7	192 0.77	42


40 × 40 × 15 mm 9P type


Model No.	Rated Voltage		Rated Current [A]	Rated Speed [min ⁻¹]	Max. Airflow		Max. Static Pressure		SPL [dB (A)]
	[V]	[Pa]			[m ³ /min]	[CFM]	[Pa]	[inchH ₂ O]	
109P0405H701	5	0.28	7700	0.18	6.4	75.5	0.303	28	
109P0412R701	12	0.13	9700	0.227	8.0	111.9	0.449	34	
109P0424H701	24	0.08	7700	0.18	6.4	75.5	0.303	28	


Low Power Consumption Fan
40 × 40 × 20 mm 9GA type


Model No.	Rated Voltage		Rated Current [A]	Rated Speed [min ⁻¹]	Max. Airflow		Max. Static Pressure		SPL [dB (A)]
	[V]	[Pa]			[m ³ /min]	[CFM]	[Pa]	[inchH ₂ O]	
9GA0405P6H001	5	0.35	12400	0.33	11.7	191	0.77	40	
9GA0412P6G001	12	0.23	16000	0.42	14.8	318	1.28	47	
9GA0424P6G001	24	0.13	16000	0.42	14.8	318	1.28	47	


40 × 40 × 20 mm 9P type


Model No.	Rated Voltage		Rated Current [A]	Rated Speed [min ⁻¹]	Max. Airflow		Max. Static Pressure		SPL [dB (A)]
	[V]	[Pa]			[m ³ /min]	[CFM]	[Pa]	[inchH ₂ O]	
109P0405J601	5	0.46	9800	0.28	9.9	98.5	0.396	39	
109P0412G601	12	0.28	12500	0.35	12.4	153.8	0.618	44	
109P0424G601	24	0.15	12500	0.35	12.4	153.8	0.618	44	


40 × 40 × 28 mm 9HVA type


Model No.	Rated Voltage		Rated Current [A]	Rated Speed [min ⁻¹]	Max. Airflow		Max. Static Pressure		SPL [dB (A)]
	[V]	[Pa]			[m ³ /min]	[CFM]	[Pa]	[inchH ₂ O]	
9HVA0412P3J001	12	2.6	38000	1.05	37.1	2300	9.24	71	


Low Power Consumption Fan
40 × 40 × 28 mm 9GAX type


Model No.	Rated Voltage		Rated Current [A]	Rated Speed [min ⁻¹]	Max. Airflow		Max. Static Pressure		SPL [dB (A)]
	[V]	[Pa]			[m ³ /min]	[CFM]	[Pa]	[inchH ₂ O]	
9GAX0412P3S001	12	1.3	25000	0.9	31.8	1000	4.02	64	


40 × 40 × 28 mm 9HV type


Model No.	Rated Voltage		Rated Current [A]	Rated Speed [min ⁻¹]	Max. Airflow		Max. Static Pressure		SPL [dB (A)]
	[V]	[Pa]			[m ³ /min]	[CFM]	[Pa]	[inchH ₂ O]	
9HV0412P3K001	12	1.52	25000	0.83	29.3	1100	4.42	65	



Low Power Consumption Fan

40×40×28 mm 9GA type



Model No.	Rated Voltage [V]	Rated Current [A]	Rated Speed [min ⁻¹]	Max. Airflow [m ³ /min] [CFM]	Max. Static Pressure [Pa] [inchH ₂ O]	SPL [dB (A)]
9GA0412P3K01	12	0.92	22000	0.81 28.6	799 3.21	61
9GA0424P3J001	24	0.27	18000	0.67 23.7	535 2.15	54



40×40×28 mm 9GE type



Model No.	Rated Voltage [V]	Rated Current [A]	Rated Speed [min ⁻¹]	Max. Airflow [m ³ /min] [CFM]	Max. Static Pressure [Pa] [inchH ₂ O]	SPL [dB (A)]
9GE0412P3K03	12	0.84	16500	0.76 26.8	415 1.666	58



40×40×28 mm 9GV type



Model No.	Rated Voltage [V]	Rated Current [A]	Rated Speed [min ⁻¹]	Max. Airflow [m ³ /min] [CFM]	Max. Static Pressure [Pa] [inchH ₂ O]	SPL [dB (A)]
9GV0412K301	12	0.84	16500	0.76 26.8	415 1.668	58



40×40×28 mm 9P type



Model No.	Rated Voltage [V]	Rated Current [A]	Rated Speed [min ⁻¹]	Max. Airflow [m ³ /min] [CFM]	Max. Static Pressure [Pa] [inchH ₂ O]	SPL [dB (A)]
109P0405H3013	5	0.68	8700	0.32 11.3	102.9 0.414	37
109P0412K3013	12	0.55	15500	0.59 20.8	340 1.365	50
109P0424R3013	24	0.25	14000	0.51 18.0	263.4 1.057	47



Low Power Consumption Fan

52×52×15 mm 9GA type



Model No.	Rated Voltage [V]	Rated Current [A]	Rated Speed [min ⁻¹]	Max. Airflow [m ³ /min] [CFM]	Max. Static Pressure [Pa] [inchH ₂ O]	SPL [dB (A)]
9GA0512P7G001	12	0.13	7800	0.5 17.7	91.5 0.367	38
9GA0524P7G001	24	0.07	7800	0.5 17.7	91.5 0.367	38



52×52×15 mm 9P type



Model No.	Rated Voltage [V]	Rated Current [A]	Rated Speed [min ⁻¹]	Max. Airflow [m ³ /min] [CFM]	Max. Static Pressure [Pa] [inchH ₂ O]	SPL [dB (A)]
109P0505M701	5	0.15	3700	0.205 7.24	21.4 0.086	22



Low Power Consumption Fan

60×60×10 mm 9GA type



Model No.	Rated Voltage [V]	Rated Current [A]	Rated Speed [min ⁻¹]	Max. Airflow [m ³ /min] [CFM]	Max. Static Pressure [Pa] [inchH ₂ O]	SPL [dB (A)]
9GA0612G9001	12	0.27	6200	0.62 21.9	66 0.26	43



Low Power Consumption Fan

60×60×15 mm 9GA type



Model No.	Rated Voltage [V]	Rated Current [A]	Rated Speed [min ⁻¹]	Max. Airflow		Max. Static Pressure		SPL
				[m ³ /min]	[CFM]	[Pa]	[inchH ₂ O]	[dB (A)]
9GA0612P7G01	12	0.16	5900	0.68	24	80	0.32	38
9GA0624P7G01	24	0.08	5900	0.68	24.0	80	0.32	38



Low Power Consumption Fan

60×60×20 mm 9GA type



Model No.	Rated Voltage [V]	Rated Current [A]	Rated Speed [min ⁻¹]	Max. Airflow		Max. Static Pressure		SPL
				[m ³ /min]	[CFM]	[Pa]	[inchH ₂ O]	[dB (A)]
9GA0612P6G001	12	0.26	6850	0.88	31.1	125	0.5	43
9GA0624P6G001	24	0.12	6850	0.88	31.1	125	0.5	43



60×60×25 mm 9G type



Model No.	Rated Voltage [V]	Rated Current [A]	Rated Speed [min ⁻¹]	Max. Airflow		Max. Static Pressure		SPL
				[m ³ /min]	[CFM]	[Pa]	[inchH ₂ O]	[dB (A)]
9G0612P4S001	12	0.67	11000	1.4	49.4	300	1.2	53
9G0624P4S001	24	0.34	11000	1.4	49.4	300	1.2	53
9G0648P4S001	48	0.18	11000	1.4	49.4	305	1.22	53



60×60×25 mm 9R type



Model No.	Rated Voltage [V]	Rated Current [A]	Rated Speed [min ⁻¹]	Max. Airflow		Max. Static Pressure		SPL
				[m ³ /min]	[CFM]	[Pa]	[inchH ₂ O]	[dB (A)]
109R0605H401	5	0.34	3800	0.53	18.7	40.2	0.161	28
109R0612J401	12	0.47	7600	1.06	37.1	155.0	0.622	44
109R0624J401	24	0.24	7600	1.06	37.1	155.0	0.622	44
109R0648J401	48	0.12	7600	1.06	37.1	155.0	0.622	44



Silent Fan

60×60×25 mm 9S type



Model No.	Rated Voltage [V]	Rated Current [A]	Rated Speed [min ⁻¹]	Max. Airflow		Max. Static Pressure		SPL
				[m ³ /min]	[CFM]	[Pa]	[inchH ₂ O]	[dB (A)]
9S0612S401	12	0.2	5000	0.74	26.1	65.7	0.26	31



60×60×25 mm 9A type San Cooler



Model No.	Rated Voltage [V]	Rated Current [A]	Rated Speed [min ⁻¹]	Max. Airflow		Max. Static Pressure		SPL
				[m ³ /min]	[CFM]	[Pa]	[inchH ₂ O]	[dB (A)]
9A0612G401	12	0.24	5600	0.78	27.6	87.3	0.351	39
9A0624G401	24	0.13	5600	0.78	27.6	87.3	0.351	39



60×60×38 mm 9HV type



Model No.	Rated Voltage [V]	Rated Current [A]	Rated Speed [min ⁻¹]	Max. Airflow [m ³ /min] [CFM]	Max. Static Pressure [Pa] [inchH ₂ O]	SPL [dB (A)]
9HV0612P1J001	12	2.7	21700	1.88 66.4	1750 7.0	68



Low Power Consumption Fan

60×60×38 mm 9GA type



Model No.	Rated Voltage [V]	Rated Current [A]	Rated Speed [min ⁻¹]	Max. Airflow [m ³ /min] [CFM]	Max. Static Pressure [Pa] [inchH ₂ O]	SPL [dB (A)]
9GA0612P1J03	12	1.5	17500	1.75 62	820 3.3	63
9GA0624P1J03	24	0.75	17500	1.75 62	820 3.3	63



60×60×38 mm 9GV type



Model No.	Rated Voltage [V]	Rated Current [A]	Rated Speed [min ⁻¹]	Max. Airflow [m ³ /min] [CFM]	Max. Static Pressure [Pa] [inchH ₂ O]	SPL [dB (A)]
9GV0612P1G03	12	2.8	16000	2.37 84	751 3.02	66
9GV0624P1G03	24	1.4	16000	2.37 84	751 3.02	66
9GV0648P1H03	48	0.5	14500	2.15 76	617 2.48	63



Low Power Consumption Fan

70×70×38 mm 9GA type



Model No.	Rated Voltage [V]	Rated Current [A]	Rated Speed [min ⁻¹]	Max. Airflow [m ³ /min] [CFM]	Max. Static Pressure [Pa] [inchH ₂ O]	SPL [dB (A)]
9GA0712P1G001	12	2.6	16500	2.65 93.6	860 3.45	65



Low Power Consumption Fan

80×80×15 mm 9GA type



Model No.	Rated Voltage [V]	Rated Current [A]	Rated Speed [min ⁻¹]	Max. Airflow [m ³ /min] [CFM]	Max. Static Pressure [Pa] [inchH ₂ O]	SPL [dB (A)]
9GA0812P7G001	12	0.29	6100	1.44 50.9	84.0 0.34	41
9GA0824P7G001	24	0.13	6100	1.44 50.9	84.0 0.34	41



80×80×15 mm 9P type



Model No.	Rated Voltage [V]	Rated Current [A]	Rated Speed [min ⁻¹]	Max. Airflow [m ³ /min] [CFM]	Max. Static Pressure [Pa] [inchH ₂ O]	SPL [dB (A)]
109P0812H701	12	0.2	3100	0.91 32.1	29.4 0.118	31
109P0824H701	24	0.1	3100	0.91 32.1	29.4 0.118	31



Low Power Consumption Fan

80×80×20 mm 9GA type



Model No.	Rated Voltage [V]	Rated Current [A]	Rated Speed [min ⁻¹]	Max. Airflow [m ³ /min] [CFM]	Max. Static Pressure [Pa] [inchH ₂ O]	SPL [dB (A)]
9GA0812P6G001	12	0.3	5850	1.72 60.78	110 0.44	45
9GA0824P6G001	24	0.15	5850	1.72 60.78	110 0.44	45


80×80×20 mm 9P type


Model No.	Rated Voltage [V]	Rated Current [A]	Rated Speed [min ⁻¹]	Max. Airflow [m ³ /min] [CFM]	Max. Static Pressure [Pa] [inchH ₂ O]	SPL [dB (A)]
109P0812C601	12	0.29	3700	1.07 37.8	46 0.185	39
109P0824H601	24	0.12	2900	0.84 29.7	29.4 0.118	31
109P0848C601	48	0.08	3700	1.07 37.8	46 0.185	39


Low Power Consumption Fan
80×80×25 mm 9GA type


Model No.	Rated Voltage [V]	Rated Current [A]	Rated Speed [min ⁻¹]	Max. Airflow [m ³ /min] [CFM]	Max. Static Pressure [Pa] [inchH ₂ O]	SPL [dB (A)]
9GA0812P4J001	12	0.6	7400	2.07 73.0	177.6 0.7	48
9GA0824P4J001	24	0.28	7400	2.07 73.0	177.6 0.7	48


80×80×25 mm 9GV type


Model No.	Rated Voltage [V]	Rated Current [A]	Rated Speed [min ⁻¹]	Max. Airflow [m ³ /min] [CFM]	Max. Static Pressure [Pa] [inchH ₂ O]	SPL [dB (A)]
9GV0848P4K03	48	0.22	5600	2.12 74.8	173.0 0.69	52


80×80×25 mm 9R type


Model No.	Rated Voltage [V]	Rated Current [A]	Rated Speed [min ⁻¹]	Max. Airflow [m ³ /min] [CFM]	Max. Static Pressure [Pa] [inchH ₂ O]	SPL [dB (A)]
109R0805F401	5	0.25	2600	0.92 32.5	28.4 0.114	26
109R0812G401	12	0.37	4500	1.5 53.0	80.4 0.323	40
109R0824G401	24	0.2	4500	1.5 53.0	80.4 0.323	40
109R0848K401	48	0.1	4600	1.56 55.1	88.4 0.355	41


Silent Fan
80×80×25 mm 9S type


Model No.	Rated Voltage [V]	Rated Current [A]	Rated Speed [min ⁻¹]	Max. Airflow [m ³ /min] [CFM]	Max. Static Pressure [Pa] [inchH ₂ O]	SPL [dB (A)]
9S0812H401	12	0.23	3400	1.12 39.5	52.15 0.2	31
9S0824M401	24	0.06	2500	0.83 29.3	27.5 0.11	22


80×80×25 mm 9A type San Cooler


Model No.	Rated Voltage [V]	Rated Current [A]	Rated Speed [min ⁻¹]	Max. Airflow [m ³ /min] [CFM]	Max. Static Pressure [Pa] [inchH ₂ O]	SPL [dB (A)]
9A0812G401	12	0.38	4500	1.5 53.0	80.3 0.323	40
9A0824G401	24	0.21	4500	1.5 53.0	80.3 0.323	40



Low Power Consumption Fan

80×80×32 mm 9GA type



Model No.	Rated Voltage [V]	Rated Current [A]	Rated Speed [min ⁻¹]	Max. Airflow [m ³ /min] [CFM]		Max. Static Pressure [Pa] [inchH ₂ O]		SPL [dB (A)]
9GA0812P2S001	12	0.83	9700	2.45	86.5	360	1.45	57
9GA0824P2S001	24	0.42	9700	2.45	86.5	360	1.45	57
9GA0848P2S001	48	0.22	9700	2.45	86.5	360	1.45	57



80×80×38 mm 9HVB type



Model No.	Rated Voltage [V]	Rated Current [A]	Rated Speed [min ⁻¹]	Max. Airflow [m ³ /min] [CFM]		Max. Static Pressure [Pa] [inchH ₂ O]		SPL [dB (A)]
9HVB0812P1G001	12	4.8	18300	4.0	141.3	1600	6.42	75



80×80×38 mm 9HVA type



Model No.	Rated Voltage [V]	Rated Current [A]	Rated Speed [min ⁻¹]	Max. Airflow [m ³ /min] [CFM]		Max. Static Pressure [Pa] [inchH ₂ O]		SPL [dB (A)]
9HVA0812P1G001	12	3.5	16100	3.75	132	1350	5.4	73
9HVA0848P1G601	48	0.9	16100	3.75	132	1250	5.0	73



80×80×38 mm 9HV type



Model No.	Rated Voltage [V]	Rated Current [A]	Rated Speed [min ⁻¹]	Max. Airflow [m ³ /min] [CFM]		Max. Static Pressure [Pa] [inchH ₂ O]		SPL [dB (A)]
9HV0812P1G601	12	3.4	14900	3.7	130.7	1000	4.0	69
9HV0824P1G003	24	1.7	14900	3.7	130.7	1000	4.0	69
9HV0848P1G001	48	0.85	14900	3.7	130.7	1000	4.0	69



Low Power Consumption Fan

80×80×38 mm 9GA type



Model No.	Rated Voltage [V]	Rated Current [A]	Rated Speed [min ⁻¹]	Max. Airflow [m ³ /min] [CFM]		Max. Static Pressure [Pa] [inchH ₂ O]		SPL [dB (A)]
9GA0812P1G61	12	1.2	10500	2.85	100.6	480	1.93	60
9GA0824P1S61	24	0.47	9550	2.6	91.8	480	1.93	59
9GA0848P1S61	48	0.25	9550	2.6	91.8	480	1.93	59



80×80×38 mm 9GV type



Model No.	Rated Voltage [V]	Rated Current [A]	Rated Speed [min ⁻¹]	Max. Airflow [m ³ /min] [CFM]		Max. Static Pressure [Pa] [inchH ₂ O]		SPL [dB (A)]
9GV0812P1G03	12	3.8	10200	3.9	138.0	490.0	1.97	65
9GV0824P1G03	24	1.6	10200	3.9	138.0	490.0	1.97	65
9GV0848P1G03	48	0.84	10200	3.9	138.0	490.0	1.97	65



80×80×38 mm 9G type



Model No.	Rated Voltage [V]	Rated Current [A]	Rated Speed [min ⁻¹]	Max. Airflow [m ³ /min] [CFM]		Max. Static Pressure [Pa] [inchH ₂ O]		SPL [dB (A)]
9G0812K101	12	1.8	7800	3.1	107.3	310	1.285	58
9G0824G101	24	0.56	6300	2.55	90	211	0.847	51
9G0848G101	48	0.27	6300	2.55	90	211	0.847	51



92×92×25 mm 9HV type



Model No.	Rated Voltage [V]	Rated Current [A]	Rated Speed [min ⁻¹]	Max. Airflow [m ³ /min] [CFM]		Max. Static Pressure [Pa] [inchH ₂ O]		SPL [dB (A)]
9HV0912P4G001	12	1.23	7350	3.35	118	280	1.12	56
9HV0924P4G001	24	0.61	7350	3.35	118	280	1.12	56



Low Power Consumption Fan

92×92×25 mm 9GA type



Model No.	Rated Voltage [V]	Rated Current [A]	Rated Speed [min ⁻¹]	Max. Airflow [m ³ /min] [CFM]		Max. Static Pressure [Pa] [inchH ₂ O]		SPL [dB (A)]
9GA0912P4J03	12	0.39	5000	2.2	77.7	105	0.42	43
9GA0924P4J03	24	0.2	5000	2.2	77.7	105	0.42	43



Silent Fan

92×92×25 mm 9S type



Model No.	Rated Voltage [V]	Rated Current [A]	Rated Speed [min ⁻¹]	Max. Airflow [m ³ /min] [CFM]		Max. Static Pressure [Pa] [inchH ₂ O]		SPL [dB (A)]
9S0912F401	12	0.14	2650	1.26	44.5	30.0	0.12	27
9S0924F401	24	0.09	2650	1.26	44.5	30.0	0.12	27



92×92×25 mm 9A type San Cooler



Model No.	Rated Voltage [V]	Rated Current [A]	Rated Speed [min ⁻¹]	Max. Airflow [m ³ /min] [CFM]		Max. Static Pressure [Pa] [inchH ₂ O]		SPL [dB (A)]
9A0912G401	12	0.39	3900	1.76	62.1	66.5	0.267	43
9A0924G401	24	0.19	3900	1.76	62.1	66.5	0.267	43
9A0948S401	48	0.08	3550	1.66	58.6	56.1	0.225	39



92×92×32 mm 9G type



Model No.	Rated Voltage [V]	Rated Current [A]	Rated Speed [min ⁻¹]	Max. Airflow [m ³ /min] [CFM]		Max. Static Pressure [Pa] [inchH ₂ O]		SPL [dB (A)]
9G0912A201	12	0.58	4300	2.5	88.3	115	0.462	44
9G0924A201	24	0.3	4300	2.5	88.3	115	0.462	44
9G0948A201	48	0.16	4300	2.5	88.3	115	0.462	44

DC Fan



92 × 92 × 38 mm 9HV type



Model No.	Rated Voltage [V]	Rated Current [A]	Rated Speed [min ⁻¹]	Max. Airflow [m ³ /min] [CFM]	Max. Static Pressure [Pa] [inchH ₂ O]	SPL [dB (A)]
9HV0912P1G001	12	5.2	14900	5.1 180	1100 4.42	72
9HV0924P1G001	24	2.50	14900	5.1 180	1100 4.42	72
9HV0948P1G001	48	1.2	14900	5.1 180	1100 4.42	72



Low Power Consumption Fan

92 × 92 × 38 mm 9GA type



Model No.	Rated Voltage [V]	Rated Current [A]	Rated Speed [min ⁻¹]	Max. Airflow [m ³ /min] [CFM]	Max. Static Pressure [Pa] [inchH ₂ O]	SPL [dB (A)]
9GA0912P1H03	12	2.1	9700	4.0 141	500 2.01	63
9GA0924P1H01	24	1.1	9700	4.0 141	500 2.01	63
9GA0948P1H03	48	0.55	9700	4.0 141	500 2.01	63



92 × 92 × 38 mm 9GV type



Model No.	Rated Voltage [V]	Rated Current [A]	Rated Speed [min ⁻¹]	Max. Airflow [m ³ /min] [CFM]	Max. Static Pressure [Pa] [inchH ₂ O]	SPL [dB (A)]
9GV0912P1G03	12	4.1	9000	5.35 189.0	430.0 1.73	68
9GV0948P1H03	48	0.82	8500	5.05 178.0	385.0 1.55	64



92 × 92 × 38 mm 9G type



Model No.	Rated Voltage [V]	Rated Current [A]	Rated Speed [min ⁻¹]	Max. Airflow [m ³ /min] [CFM]	Max. Static Pressure [Pa] [inchH ₂ O]	SPL [dB (A)]
9G0912G101	12	1.1	5000	3.1 110	150 0.602	50
9G0924G101	24	0.55	5000	3.1 110	150 0.602	50
9G0948J101	48	0.32	5500	3.41 120.49	178 0.715	55



Low Power Consumption Fan

120 × 120 × 25 mm 9GA type



Model No.	Rated Voltage [V]	Rated Current [A]	Rated Speed [min ⁻¹]	Max. Airflow [m ³ /min] [CFM]	Max. Static Pressure [Pa] [inchH ₂ O]	SPL [dB (A)]
9GA1212P4G001	12	0.93	6400	3.8 134	365 1.47	57
9GA1224P4G001	24	0.47	6400	3.8 134	365 1.47	57
9GA1248P4G001	48	0.24	6400	3.8 134	365 1.47	57



120 × 120 × 25 mm 9GV type



Model No.	Rated Voltage [V]	Rated Current [A]	Rated Speed [min ⁻¹]	Max. Airflow [m ³ /min] [CFM]	Max. Static Pressure [Pa] [inchH ₂ O]	SPL [dB (A)]
9GV1212P4G01	12	1.68	5100	4.83 171	224 0.9	58
9GV1224P4G01	24	0.84	5100	4.83 171	224 0.9	58
9GV1248P4J01	48	0.5	5400	5.11 180	251 1.01	59


120 × 120 × 25 mm 9G type


Model No.	Rated Voltage [V]	Rated Current [A]	Rated Speed [min ⁻¹]	Max. Airflow [m ³ /min] [CFM]		Max. Static Pressure [Pa] [inchH ₂ O]		SPL [dB (A)]
9G1212G401	12	0.9	4100	3.68	130	120	0.482	51
9G1224G401	24	0.47	4100	3.68	130	120	0.482	51
9G1248G401	48	0.23	4100	3.68	130	120	0.482	51


Silent Fan
120 × 120 × 25 mm 9S type


Model No.	Rated Voltage [V]	Rated Current [A]	Rated Speed [min ⁻¹]	Max. Airflow [m ³ /min] [CFM]		Max. Static Pressure [Pa] [inchH ₂ O]		SPL [dB (A)]
9S1212H401	12	0.39	2700	2.45	86.5	45.2	0.18	36
9S1224M401	24	0.06	1850	1.66	58.6	22.7	0.09	24


120 × 120 × 38 mm 9HV type


Model No.	Rated Voltage [V]	Rated Current [A]	Rated Speed [min ⁻¹]	Max. Airflow [m ³ /min] [CFM]		Max. Static Pressure [Pa] [inchH ₂ O]		SPL [dB (A)]
9HV1224P1A001	24	2.4	9600	7.0	247	950	3.82	71
9HV1248P1G001	48	2.0	11500	8.3	293	1300	5.22	75


120 × 120 × 38 mm 9GV type


Model No.	Rated Voltage [V]	Rated Current [A]	Rated Speed [min ⁻¹]	Max. Airflow [m ³ /min] [CFM]		Max. Static Pressure [Pa] [inchH ₂ O]		SPL [dB (A)]
9GV1212P1J01	12	3.0	6400	6.35	224.0	360.0	1.45	64
9GV1224P1J01	24	1.5	6400	6.35	224.0	360	1.45	64
9GV1248P1J01	48	0.75	6400	6.35	224.0	360.0	1.45	64


120 × 120 × 38 mm 9SG type


Model No.	Rated Voltage [V]	Rated Current [A]	Rated Speed [min ⁻¹]	Max. Airflow [m ³ /min] [CFM]		Max. Static Pressure [Pa] [inchH ₂ O]		SPL [dB (A)]
9SG1212G101	12	4.0	6000	7.35	260	340	1.37	64
9SG1224G101	24	2.0	6000	7.35	260	340	1.37	64
9SG1248G101	48	1.0	6000	7.35	260	340	1.37	64


120 × 120 × 38 mm 9G type


Model No.	Rated Voltage [V]	Rated Current [A]	Rated Speed [min ⁻¹]	Max. Airflow [m ³ /min] [CFM]		Max. Static Pressure [Pa] [inchH ₂ O]		SPL [dB (A)]
9G1212G101	12	0.98	3600	3.88	137	135	0.542	49
9G1224G101	24	0.5	3600	3.88	137	135	0.542	49
9G1248G101	48	0.25	3600	3.88	137	135	0.542	49

**127 × 127 × 38 mm 9E type**

Model No.	Rated Voltage	Rated Current	Rated Speed	Max. Airflow		Max. Static Pressure		SPL
	[V]	[A]	[min ⁻¹]	[m ³ /min]	[CFM]	[Pa]	[inchH ₂ O]	[dB (A)]
109E1312A101	12	1.4	3850	4.81	170	155	0.622	52
109E1324G101	24	1.1	4550	5.66	200	216	0.867	57
109E1348G101	48	0.54	4550	5.66	200	216	0.867	57

**127 × 127 × 38 mm 9P type**

Model No.	Rated Voltage	Rated Current	Rated Speed	Max. Airflow		Max. Static Pressure		SPL
	[V]	[A]	[min ⁻¹]	[m ³ /min]	[CFM]	[Pa]	[inchH ₂ O]	[dB (A)]
109P1312S101	12	1.3	3300	4.2	148	117.6	0.472	47
109P1324S101	24	0.55	3300	4.2	148	117.6	0.472	47
109P1348S101	48	0.3	3300	4.2	148	117.6	0.472	47

**140 × 140 × 38 mm 9GV type**

Model No.	Rated Voltage	Rated Current	Rated Speed	Max. Airflow		Max. Static Pressure		SPL
	[V]	[A]	[min ⁻¹]	[m ³ /min]	[CFM]	[Pa]	[inchH ₂ O]	[dB (A)]
9GV1412P1G001	12	4.6	7600	8.8	310	640	2.57	70
9GV1424P1G001	24	2.3	7600	8.8	310	640	2.57	70
9GV1448P1G001	48	1.15	7600	8.8	310	640	2.57	70

**140 × 140 × 38 mm 9P type**

Model No.	Rated Voltage	Rated Current	Rated Speed	Max. Airflow		Max. Static Pressure		SPL
	[V]	[A]	[min ⁻¹]	[m ³ /min]	[CFM]	[Pa]	[inchH ₂ O]	[dB (A)]
109P1412H101	12	0.73	2600	4.5	159	94	0.378	46
109P1424H101	24	0.37	2600	4.5	159	94	0.378	46
109P1448H101	48	0.2	2600	4.5	159	94	0.378	46

**150 × 150 × 50 mm 9GV type**

Model No.	Rated Voltage	Rated Current	Rated Speed	Max. Airflow		Max. Static Pressure		SPL
	[V]	[A]	[min ⁻¹]	[m ³ /min]	[CFM]	[Pa]	[inchH ₂ O]	[dB (A)]
9GV1512H501	12	2.9	3900	8.54	300	210	0.84	61
9GV1524M501	24	0.6	3000	6.35	224	132	0.53	53

**ø172 × 147 × 25 mm 9E type**

Model No.	Rated Voltage	Rated Current	Rated Speed	Max. Airflow		Max. Static Pressure		SPL
	[V]	[A]	[min ⁻¹]	[m ³ /min]	[CFM]	[Pa]	[inchH ₂ O]	[dB (A)]
109E4712M401	12	1.3	2800	5.2	183	92	0.369	51
109E4724H401	24	1.0	3400	6.4	226	135	0.542	57
109E4748S401	48	0.62	3650	6.8	240	156	0.627	58


Ø172 × 150 × 51 mm 9HV type


Model No.	Rated Voltage [V]	Rated Current [A]	Rated Speed [min ⁻¹]	Max. Airflow [m ³ /min] [CFM]	Max. Static Pressure [Pa] [inchH ₂ O]	SPL [dB (A)]
9HV5724P5H001	24	5.0	8000	12.3 434	1000 4.02	77
9HV5748P5G001	48	5.0	10500	16.1 568	1600 6.43	83


Ø172 × 150 × 51 mm 9SG type


Model No.	Rated Voltage [V]	Rated Current [A]	Rated Speed [min ⁻¹]	Max. Airflow [m ³ /min] [CFM]	Max. Static Pressure [Pa] [inchH ₂ O]	SPL [dB (A)]
9SG5724P5H61	24	2.8	6500	11.6 410	540 2.16	71
9SG5748P5G01	48	2.91	8600	15.46 546	1000 4.02	78


Ø172 × 150 × 51 mm 9GV type


Model No.	Rated Voltage [V]	Rated Current [A]	Rated Speed [min ⁻¹]	Max. Airflow [m ³ /min] [CFM]	Max. Static Pressure [Pa] [inchH ₂ O]	SPL [dB (A)]
9GV5724H501	24	4.0	6300	11.32 400	690 2.77	74
9GV5748H501	48	2.0	6300	11.32 400	690 2.77	74


Ø172 × 150 × 51 mm 9E type


Model No.	Rated Voltage [V]	Rated Current [A]	Rated Speed [min ⁻¹]	Max. Airflow [m ³ /min] [CFM]	Max. Static Pressure [Pa] [inchH ₂ O]	SPL [dB (A)]
109E5712K501	12	2.9	4100	8.5 300	243.0 0.976	60
109E5724C501	24	2.3	4800	9.9 350	308.0 1.237	66
109E5748C501	48	1.2	4800	9.9 350	308.0 1.237	66


Ø172 × 51 mm 9E type


Model No.	Rated Voltage [V]	Rated Current [A]	Rated Speed [min ⁻¹]	Max. Airflow [m ³ /min] [CFM]	Max. Static Pressure [Pa] [inchH ₂ O]	SPL [dB (A)]
109E1712K501	12	2.9	4100	8.5 300	243.0 0.976	55
109E1724C501	24	2.3	4800	9.9 350	308.0 1.237	60
109E1748C501	48	1.2	4800	9.9 350	308.0 1.237	60


Ø200 × 70 mm 9GV type


Model No.	Rated Voltage [V]	Rated Current [A]	Rated Speed [min ⁻¹]	Max. Airflow [m ³ /min] [CFM]	Max. Static Pressure [Pa] [inchH ₂ O]	SPL [dB (A)]
9GV2048P0G201	48	12.5	8000	31.5 1112	1400 5.62	81

DC Fan



ø200 × 70 mm 9EC type



Model No.	Rated Voltage	Rated Current	Rated Speed		Max. Airflow		Max. Static Pressure		SPL [dB (A)]
	[V]	[A]	[min ⁻¹]		[m ³ /min]	[CFM]	[Pa]	[inchH ₂ O]	
9EC2024H001	24	2.0	3600		11.0	388	360	1.446	60
9EC2048J001	48	4.4	6100		18.3	646	1000	4.016	75

Counter Rotating Fan



38 × 38 × 48 mm 9CRA type



Model No.	Rated Voltage [V]	Rated Current [A]	Rated Speed		Max. Airflow		Max. Static Pressure		SPL [dB (A)]
			[min ⁻¹]		[m ³ /min]	[CFM]	[Pa]	[inchH ₂ O]	
			Inlet	Outlet					
9CRA0312P4K03	12	1.5	17600	14520	0.77	27.2	700.0	2.81	64



40 × 40 × 48 mm 9CRA type



Model No.	Rated Voltage [V]	Rated Current [A]	Rated Speed		Max. Airflow		Max. Static Pressure		SPL [dB (A)]
			[min ⁻¹]		[m ³ /min]	[CFM]	[Pa]	[inchH ₂ O]	
			Inlet	Outlet					
9CRA0412P4K03	12	1.6	17500	11700	0.92	32.5	650.0	2.61	64



40 × 40 × 56 mm 9CRJ type



Model No.	Rated Voltage [V]	Rated Current [A]	Rated Speed		Max. Airflow		Max. Static Pressure		SPL [dB (A)]
			[min ⁻¹]		[m ³ /min]	[CFM]	[Pa]	[inchH ₂ O]	
			Inlet	Outlet					
9CRJ0412P5J001	12	3.1	36200	32000	1.06	37.4	2400	9.64	72



40 × 40 × 56 mm 9CRH type



Model No.	Rated Voltage [V]	Rated Current [A]	Rated Speed		Max. Airflow		Max. Static Pressure		SPL [dB (A)]
			[min ⁻¹]		[m ³ /min]	[CFM]	[Pa]	[inchH ₂ O]	
			Inlet	Outlet					
9CRH0412P5J001	12	2.52	29500	25500	0.93	32.9	1700	6.83	70



40 × 40 × 56 mm 9CRV type



Model No.	Rated Voltage [V]	Rated Current [A]	Rated Speed		Max. Airflow		Max. Static Pressure		SPL [dB (A)]
			[min ⁻¹]		[m ³ /min]	[CFM]	[Pa]	[inchH ₂ O]	
			Inlet	Outlet					
9CRV0412P5J201	12	1.8	22500	20000	0.9	31.8	1050	4.22	68

Counter Rotating Fan



40 × 40 × 56 mm 9CRD type



Model No.	Rated Voltage [V]	Rated Current [A]	Rated Speed [min ⁻¹]		Max. Airflow [m ³ /min] [CFM]	Max. Static Pressure [Pa]	SPL [dB (A)]
			Inlet	Outlet			
9CRD0412P5J03	12	1.15	19000	12600	0.87 30.72	630 2.53	61



40 × 40 × 56 mm 9CRE type



Model No.	Rated Voltage [V]	Rated Current [A]	Rated Speed [min ⁻¹]		Max. Airflow [m ³ /min] [CFM]	Max. Static Pressure [Pa]	SPL [dB (A)]
			Inlet	Outlet			
9CRE0412P5J03	12	1.4	15800	12200	0.9 31.8	570.0 2.29	62



60 × 60 × 51 mm 9CR type



Model No.	Rated Voltage [V]	Rated Current [A]	Rated Speed [min ⁻¹]		Max. Airflow [m ³ /min] [CFM]	Max. Static Pressure [Pa]	SPL [dB (A)]
			Inlet	Outlet			
9CR0612P5G03	12	2.7	11500	9000	2.03 71.7	600 2.41	68



60 × 60 × 56 mm 9CRA type



Model No.	Rated Voltage [V]	Rated Current [A]	Rated Speed [min ⁻¹]		Max. Airflow [m ³ /min] [CFM]	Max. Static Pressure [Pa]	SPL [dB (A)]
			Inlet	Outlet			
9CRA0612P6K001	12	3.1	18300	15800	2.28 80.5	1130 4.54	73



60 × 60 × 76 mm 9CRE type



Model No.	Rated Voltage [V]	Rated Current [A]	Rated Speed [min ⁻¹]		Max. Airflow [m ³ /min] [CFM]	Max. Static Pressure [Pa]	SPL [dB (A)]
			Inlet	Outlet			
9CRE0612P0G001	12	2.3	16500	13000	2.0 70.6	1000 4.0	66



60 × 60 × 76 mm 9CRA type



Model No.	Rated Voltage [V]	Rated Current [A]	Rated Speed [min ⁻¹]		Max. Airflow [m ³ /min] [CFM]	Max. Static Pressure [Pa]	SPL [dB (A)]
			Inlet	Outlet			
9CRA0612P0G001	12	2.3	16500	13000	2.0 70.6	1000 4.0	66



80 × 80 × 80 mm 9CRB type



Model No.	Rated Voltage [V]	Rated Current [A]	Rated Speed [min ⁻¹]		Max. Airflow [m ³ /min] [CFM]	Max. Static Pressure [Pa]	SPL [dB (A)]
			Inlet	Outlet			
9CRB0812P8G001	12	9.2	14600	12200	5.5 194	1150 4.6	80

Counter Rotating Fan



80 × 80 × 80 mm 9CRE type



Model No.	Rated Voltage [V]	Rated Current [A]	Rated Speed [min ⁻¹]		Max. Airflow [m ³ /min] [CFM]	Max. Static Pressure [Pa] [inchH ₂ O]	SPL [dB (A)]
			Inlet	Outlet			
9CRE0812P8G001	12	5.3	12000	11300	4.5 158.9	1150 4.62	76



80 × 80 × 80 mm 9CRA type



Model No.	Rated Voltage [V]	Rated Current [A]	Rated Speed [min ⁻¹]		Max. Airflow [m ³ /min] [CFM]	Max. Static Pressure [Pa] [inchH ₂ O]	SPL [dB (A)]
			Inlet	Outlet			
9CRA0812P8G001	12	5.3	12000	11300	4.5 158.9	1150 4.62	76
9CRA0824P8G001	24	2.65	12000	11300	4.5 158.9	1150 4.62	76
9CRA0848P8G001	48	1.32	12000	11300	4.5 158.9	1150 4.62	76



92 × 92 × 76 mm 9CRA type



Model No.	Rated Voltage [V]	Rated Current [A]	Rated Speed [min ⁻¹]		Max. Airflow [m ³ /min] [CFM]	Max. Static Pressure [Pa] [inchH ₂ O]	SPL [dB (A)]
			Inlet	Outlet			
9CRA0912P0G001	12	9.0	13300	12200	5.8 205	1650 6.63	81
9CRA0948P0G601	48	2.2	13300	12200	5.8 205	1650 6.63	81



120 × 120 × 76 mm 9CR type



Model No.	Rated Voltage [V]	Rated Current [A]	Rated Speed [min ⁻¹]		Max. Airflow [m ³ /min] [CFM]	Max. Static Pressure [Pa] [inchH ₂ O]	SPL [dB (A)]
			Inlet	Outlet			
9CR1212P0G03	12	7.2	6200	3800	8.5 300	480 1.93	70



ø172 × 150 × 102 mm 9CR type



Model No.	Rated Voltage [V]	Rated Current [A]	Rated Speed [min ⁻¹]		Max. Airflow [m ³ /min] [CFM]	Max. Static Pressure [Pa] [inchH ₂ O]	SPL [dB (A)]
			Inlet	Outlet			
9CR5748P9G001	48	5.5	7300	6400	18 636	1400 5.62	83

Reversible Flow Fan



ø92 × 38 mm 9RF type



Model No.	Rated Voltage [V]	Rated Current [A]	Rated Speed [min ⁻¹]	Max. Airflow [m ³ /min] [CFM]	Max. Static Pressure [Pa] [inchH ₂ O]	SPL [dB (A)]
9RF0912P1H001	12	0.17	5500	1.2 42.4	156 0.63	39
9RF0924P1H001	24	0.09	5500	1.2 42.4	156 0.63	39

Values for when air is flowing in the forward direction.



ø136 × 28 mm 9RF type



Model No.	Rated Voltage [V]	Rated Current [A]	Rated Speed [min ⁻¹]	Max. Airflow [m ³ /min] [CFM]	Max. Static Pressure [Pa] [inchH ₂ O]	SPL [dB (A)]
9RF1312P3H001	12	0.15	3100	2.0 70.7	102 0.41	35
9RF1324P3H001	24	0.09	3100	2.0 70.7	102 0.41	35

Values for when air is flowing in the forward direction.

Splash Proof Fan



40 × 40 × 20 mm 9WP type

IP68



Model No.	Rated Voltage [V]	Rated Current [A]	Rated Speed [min ⁻¹]	Max. Airflow [m ³ /min] [CFM]	Max. Static Pressure [Pa] [inchH ₂ O]	SPL [dB (A)]
9WP0412H6001	12	0.1	8000	0.255 8.0	65.7 0.264	33



40 × 40 × 28 mm 9WL type

IP68



Model No.	Rated Voltage [V]	Rated Current [A]	Rated Speed [min ⁻¹]	Max. Airflow [m ³ /min] [CFM]	Max. Static Pressure [Pa] [inchH ₂ O]	SPL [dB (A)]
9WL0412P3J001	12	0.52	17500	0.63 22.2	400 1.61	51
9WL0424P3J001	24	0.26	17500	0.63 22.2	400 1.61	51



60 × 60 × 25 mm 9WPA type

IP68



OPTION
Ribless



Model No.	Rated Voltage [V]	Rated Current [A]	Rated Speed [min ⁻¹]	Max. Airflow [m ³ /min] [CFM]	Max. Static Pressure [Pa] [inchH ₂ O]	SPL [dB (A)]
9WPA0612P4G001	12	0.93	12000	1.52 53.7	357 1.44	56
9WPA0624P4G001	24	0.46	12000	1.52 53.7	357 1.44	56



60 × 60 × 25 mm 9WL type

IP68



Model No.	Rated Voltage [V]	Rated Current [A]	Rated Speed [min ⁻¹]	Max. Airflow [m ³ /min] [CFM]	Max. Static Pressure [Pa] [inchH ₂ O]	SPL [dB (A)]
9WL0612P4S001	12	0.67	11000	1.4 49.4	300 1.204	53
9WL0624P4S001	24	0.34	11000	1.4 49.4	300 1.204	53

Splash Proof Fan



60×60×25 mm 9WP type

IP68



OPTION
Ribless

Model No.	Rated Voltage [V]	Rated Current [A]	Rated Speed [min ⁻¹]	Max. Airflow [m ³ /min] [CFM]	Max. Static Pressure [Pa] [inchH ₂ O]	SPL [dB (A)]
9WP0612G401	12	0.21	5600	0.78 27.5	87.3 0.351	39
9WP0624J401	24	0.2	7600	1.06 37.1	155.0 0.622	44
9WP0648H401	48	0.04	3800	0.53 18.7	40.2 0.161	28



80×80×25 mm 9WPA type

IP68



OPTION
Ribless



Model No.	Rated Voltage [V]	Rated Current [A]	Rated Speed [min ⁻¹]	Max. Airflow [m ³ /min] [CFM]	Max. Static Pressure [Pa] [inchH ₂ O]	SPL [dB (A)]
9WPA0812P4G001	12	0.71	8250	2.32 81.9	210 0.84	54
9WPA0824P4G001	24	0.36	8250	2.32 81.9	210 0.84	54



80×80×25 mm 9WL type

IP68



OPTION
Ribless



Model No.	Rated Voltage [V]	Rated Current [A]	Rated Speed [min ⁻¹]	Max. Airflow [m ³ /min] [CFM]	Max. Static Pressure [Pa] [inchH ₂ O]	SPL [dB (A)]
9WL0812P4J001	12	0.6	7400	2.07 73.0	177 0.71	49
9WL0824P4J001	24	0.28	7400	2.07 73.0	177 0.71	49



80×80×25 mm 9WP type

IP68



OPTION
Ribless

Model No.	Rated Voltage [V]	Rated Current [A]	Rated Speed [min ⁻¹]	Max. Airflow [m ³ /min] [CFM]	Max. Static Pressure [Pa] [inchH ₂ O]	SPL [dB (A)]
9WP0812G401	12	0.38	4500	1.5 53	80.4 0.323	40
9WP0824S401	24	0.1	3400	1.2 42.4	48.0 0.193	34
9WP0848S401	48	0.06	3400	1.2 42.4	48.0 0.193	34



80×80×38 mm 9WV type

IP68



OPTION
Ribless

Model No.	Rated Voltage [V]	Rated Current [A]	Rated Speed [min ⁻¹]	Max. Airflow [m ³ /min] [CFM]	Max. Static Pressure [Pa] [inchH ₂ O]	SPL [dB (A)]
9WV0812P1M001	12	0.75	6000	2.29 80.9	169 0.68	51
9WV0848P1H001	48	0.75	9700	3.7 131	440 1.77	63



92×92×25 mm 9WPA type

IP68



OPTION
Ribless



Model No.	Rated Voltage [V]	Rated Current [A]	Rated Speed [min ⁻¹]	Max. Airflow [m ³ /min] [CFM]	Max. Static Pressure [Pa] [inchH ₂ O]	SPL [dB (A)]
9WPA0912P4G001	12	0.5	5700	2.45 86.5	126 0.51	47
9WPA0924P4G001	24	0.25	5700	2.45 86.5	126 0.51	47



92 × 92 × 25 mm 9WL type

IP68

PWM

Pulse sensor



Model No.	Rated Voltage [V]	Rated Current [A]	Rated Speed [min ⁻¹]	Max. Airflow [m ³ /min] [CFM]	Max. Static Pressure [Pa] [inchH ₂ O]	SPL [dB (A)]
9WL0912P4J001	12	0.42	5000	2.2 77.7	105 0.42	44
9WL0924P4J001	24	0.21	5000	2.2 77.7	105 0.42	44



92 × 92 × 25 mm 9WP type

IP68

Pulse sensor

OPTION Ribless

Model No.	Rated Voltage [V]	Rated Current [A]	Rated Speed [min ⁻¹]	Max. Airflow [m ³ /min] [CFM]	Max. Static Pressure [Pa] [inchH ₂ O]	SPL [dB (A)]
9WP0912S401	12	0.27	3550	1.66 58.6	56.1 0.225	39
9WP0924G401	24	0.19	3900	1.76 62.2	66.5 0.267	43



92 × 92 × 38 mm 9WL type

IP68

PWM

Pulse sensor



Model No.	Rated Voltage [V]	Rated Current [A]	Rated Speed [min ⁻¹]	Max. Airflow [m ³ /min] [CFM]	Max. Static Pressure [Pa] [inchH ₂ O]	SPL [dB (A)]
9WL0912P1H001	12	1.9	9000	3.7 130.6	430 1.72	61
9WL0924P1H001	24	0.95	9000	3.7 130.6	430 1.72	61
9WL0948P1H601	48	0.48	9000	3.7 130.6	430 1.72	61



92 × 92 × 38 mm 9WV type

IP68

PWM

Pulse sensor

Model No.	Rated Voltage [V]	Rated Current [A]	Rated Speed [min ⁻¹]	Max. Airflow [m ³ /min] [CFM]	Max. Static Pressure [Pa] [inchH ₂ O]	SPL [dB (A)]
9WV0924P1H001	24	1.6	8500	5.05 178	385 1.55	64
9WV0948P1H001	48	0.82	8500	5.05 178	385 1.55	64



120 × 120 × 38 mm 9WV type

IP68

PWM

Pulse sensor



Model No.	Rated Voltage [V]	Rated Current [A]	Rated Speed [min ⁻¹]	Max. Airflow [m ³ /min] [CFM]	Max. Static Pressure [Pa] [inchH ₂ O]	SPL [dB (A)]
9WV1212P1J001	12	3	6400	6.35 224.0	360 1.45	64
9WV1224P1J601	24	1.5	6400	6.35 224.0	360 1.45	64
9WV1248P1J001	48	0.65	6400	6.35 224.0	360 1.45	64



120 × 120 × 38 mm 9WG type

IP55

Pulse sensor

Model No.	Rated Voltage [V]	Rated Current [A]	Rated Speed [min ⁻¹]	Max. Airflow [m ³ /min] [CFM]	Max. Static Pressure [Pa] [inchH ₂ O]	SPL [dB (A)]
9WG1212G101-E	12	0.98	3600	3.88 137	135 0.542	49
9WG1224G101-E	24	0.5	3600	3.88 137	135 0.542	49
9WG1248G101-E	48	0.25	3600	3.88 137	135 0.542	49

Splash Proof Fan



120 × 120 × 38 mm 9WP type

IP68



Model No.	Rated Voltage [V]	Rated Current [A]	Rated Speed [min ⁻¹]	Max. Airflow [m ³ /min] [CFM]	Max. Static Pressure [Pa] [inchH ₂ O]	SPL [dB (A)]
9WP1212H101	12	0.38	2600	2.8 99	70.4 0.283	39
9WP1224H101	24	0.22	2600	2.8 99	70.4 0.283	39
9WP1248H101	48	0.11	2600	2.8 99	70.4 0.283	39



140 × 140 × 38 mm 9WL type

IP68



Model No.	Rated Voltage [V]	Rated Current [A]	Rated Speed [min ⁻¹]	Max. Airflow [m ³ /min] [CFM]	Max. Static Pressure [Pa] [inchH ₂ O]	SPL [dB (A)]
9WL1412P1A001	12	3.72	6900	8.0 282	516 2.07	68
9WL1424P1A001	24	1.86	6900	8.0 282	516 2.07	68
9WL1448P1A001	48	0.92	6900	8.0 282	516 2.07	68



140 × 140 × 51 mm 9WL type

IP68



Model No.	Rated Voltage [V]	Rated Current [A]	Rated Speed [min ⁻¹]	Max. Airflow [m ³ /min] [CFM]	Max. Static Pressure [Pa] [inchH ₂ O]	SPL [dB (A)]
9WL1412P5G001	12	5.16	7500	9.0 318	655 2.63	69
9WL1424P5G001	24	2.58	7500	9.0 318	655 2.63	69
9WL1448P5G001	48	1.29	7500	9.0 318	655 2.63	69



172 × 150 × 51 mm 9WG type

IP68



Model No.	Rated Voltage [V]	Rated Current [A]	Rated Speed [min ⁻¹]	Max. Airflow [m ³ /min] [CFM]	Max. Static Pressure [Pa] [inchH ₂ O]	SPL [dB (A)]
9WG5748P5G001	48	2.91	8600	15.46 546	1000 4.02	78



172 × 150 × 51 mm 9WE type

IP68



Model No.	Rated Voltage [V]	Rated Current [A]	Rated Speed [min ⁻¹]	Max. Airflow [m ³ /min] [CFM]	Max. Static Pressure [Pa] [inchH ₂ O]	SPL [dB (A)]
9WE5724K501	24	1.3	4100	8.5 300	243 0.976	60
9WE5748K501	48	0.7	4100	8.5 300	243 0.976	60



172 × 51 mm 9WE type

IP68



Model No.	Rated Voltage [V]	Rated Current [A]	Rated Speed [min ⁻¹]	Max. Airflow [m ³ /min] [CFM]	Max. Static Pressure [Pa] [inchH ₂ O]	SPL [dB (A)]
9WE1724K501	24	1.3	4100	8.5 300.1	243 0.97	55

Splash Proof Centrifugal Fan



Ø100×25 mm 9W1TM type

IP54

PWM

Pulse sensor

Model No.	Rated Voltage [V]	Rated Current [A]	Rated Speed [min ⁻¹]	Max. Airflow [m ³ /min] [CFM]	Max. Static Pressure [Pa] [inchH ₂ O]	SPL [dB (A)]
9W1TM48P4G01	48	0.36	7400	2.03 71.7	708 2.84	65



Ø133×91 mm 9W1TJ type

IP54

PWM

Pulse sensor

Model No.	Rated Voltage [V]	Rated Current [A]	Rated Speed [min ⁻¹]	Max. Airflow [m ³ /min] [CFM]	Max. Static Pressure [Pa] [inchH ₂ O]	SPL [dB (A)]
9W1TJ24P0H61	24	1.2	4150	6.39 225	395 1.59	61
9W1TJ48P0H61	48	0.55	4150	6.39 225	395 1.59	61



Ø150×35 mm 9W2TN type

IP68

PWM

Pulse sensor



Model No.	Rated Voltage [V]	Rated Current [A]	Rated Speed [min ⁻¹]	Max. Airflow [m ³ /min] [CFM]	Max. Static Pressure [Pa] [inchH ₂ O]	SPL [dB (A)]
9W2TN24P1H001	24	0.64	3800	3.83 135	390 1.57	59
9W2TN48P1H001	48	0.32	3800	3.83 135	390 1.57	59



Ø150×35 mm 9W1TN type

IP54

PWM

Pulse sensor

Model No.	Rated Voltage [V]	Rated Current [A]	Rated Speed [min ⁻¹]	Max. Airflow [m ³ /min] [CFM]	Max. Static Pressure [Pa] [inchH ₂ O]	SPL [dB (A)]
9W1TN48P1H01	48	0.32	3800	3.83 135	390 1.57	59



Ø175×69 mm 9W2TGA type

IP56

PWM

Pulse sensor



Model No.	Rated Voltage [V]	Rated Current [A]	Rated Speed [min ⁻¹]	Max. Airflow [m ³ /min] [CFM]	Max. Static Pressure [Pa] [inchH ₂ O]	SPL [dB (A)]
9W2TGA48P0G001	48	3.85	5700	17.3 611	1100 4.42	80



Ø175×69 mm 9W1TG type

IP54

PWM

Pulse sensor

Model No.	Rated Voltage [V]	Rated Current [A]	Rated Speed [min ⁻¹]	Max. Airflow [m ³ /min] [CFM]	Max. Static Pressure [Pa] [inchH ₂ O]	SPL [dB (A)]
9W1TG48P0H61	48	0.65	3100	9.0 318	360 1.44	64



Ø221×71 mm 9W2TP type

IP56

PWM

Pulse sensor



Model No.	Rated Voltage [V]	Rated Current [A]	Rated Speed [min ⁻¹]	Max. Airflow [m ³ /min] [CFM]	Max. Static Pressure [Pa] [inchH ₂ O]	SPL [dB (A)]
9W2TP24P0H001	24	3.35	3050	17.6 621	530 2.13	71.5
9W2TP48P0S001	48	2.3	3400	19.6 692	659 2.65	73.5

Splash Proof Centrifugal Fan



225×99 mm 9W2TS type

IP56

PWM

Pulse sensor



Model No.	Rated Voltage [V]	Rated Current [A]	Rated Speed [min ⁻¹]	Max. Airflow [m ³ /min] [CFM]	Max. Static Pressure [Pa] [inchH ₂ O]	SPL [dB (A)]
9W2TS48P0S001	48	2.45	3000	23.5 830	635 2.55	72.0



270×270×99 mm 9B1W2TP type

IP56

PWM

Pulse sensor

Model No.	Rated Voltage [V]	Rated Current [A]	Rated Speed [min ⁻¹]	Max. Airflow [m ³ /min] [CFM]	Max. Static Pressure [Pa] [inchH ₂ O]	SPL [dB (A)]
9B1W2TP24P0H001	24	3.35	3050	17.6 621	530 2.13	71.5
9B1W2TP48P0S001	48	2.3	3400	19.6 692	659 2.65	73.5



270×270×119 mm 9B1W2TS type

IP56

PWM

Pulse sensor

Model No.	Rated Voltage [V]	Rated Current [A]	Rated Speed [min ⁻¹]	Max. Airflow [m ³ /min] [CFM]	Max. Static Pressure [Pa] [inchH ₂ O]	SPL [dB (A)]
9B1W2TS48P0S001	48	2.45	3000	23.5 830	635 2.55	72.0

Splash Proof Blower



97×33 mm 9W1BM type

IP68

PWM

Pulse sensor



Model No.	Rated Voltage [V]	Rated Current [A]	Rated Speed [min ⁻¹]	Max. Airflow [m ³ /min] [CFM]	Max. Static Pressure [Pa] [inchH ₂ O]	SPL [dB (A)]
9W1BM12P2H001	12	1.3	4800	1.09 38.5	540 2.17	58
9W1BM24P2H001	24	0.65	4800	1.09 38.5	540 2.17	58

Oil Proof Fan



40×40×15 mm 9WF type



Model No.	Rated Voltage [V]	Rated Current [A]	Rated Speed [min ⁻¹]	Max. Airflow [m ³ /min] [CFM]	Max. Static Pressure [Pa] [inchH ₂ O]	SPL [dB (A)]
9WF0424H701	24	0.085	11300	0.195 6.9	80 0.32	38



40×40×20 mm 9WFA type



Model No.	Rated Voltage [V]	Rated Current [A]	Rated Speed [min ⁻¹]	Max. Airflow [m ³ /min] [CFM]	Max. Static Pressure [Pa] [inchH ₂ O]	SPL [dB (A)]
9WFA0424G6001	24	0.11	17000	0.31 10.9	170 0.68	48



40×40×20 mm 9WF type



Model No.	Rated Voltage [V]	Rated Current [A]	Rated Speed [min ⁻¹]	Max. Airflow [m ³ /min] [CFM]	Max. Static Pressure [Pa] [inchH ₂ O]	SPL [dB (A)]
9WF0424H601	24	0.11	13100	0.26 9.2	90 0.361	42



60×60×15 mm 9WF type



Model No.	Rated Voltage [V]	Rated Current [A]	Rated Speed [min ⁻¹]	Max. Airflow [m ³ /min] [CFM]	Max. Static Pressure [Pa] [inchH ₂ O]	SPL [dB (A)]
9WF0624H701	24	0.12	6800	0.52 18.3	95 0.38	44



60×60×20 mm 9WFA type



Model No.	Rated Voltage [V]	Rated Current [A]	Rated Speed [min ⁻¹]	Max. Airflow [m ³ /min] [CFM]	Max. Static Pressure [Pa] [inchH ₂ O]	SPL [dB (A)]
9WFA0624G6001	24	0.16	7700	0.79 27.9	158 0.63	48



60×60×20 mm 9WF type



Model No.	Rated Voltage [V]	Rated Current [A]	Rated Speed [min ⁻¹]	Max. Airflow [m ³ /min] [CFM]	Max. Static Pressure [Pa] [inchH ₂ O]	SPL [dB (A)]
9WF0624H601	24	0.15	6600	0.69 24.3	114 0.45	42



60×60×25 mm 9WF type



Model No.	Rated Voltage [V]	Rated Current [A]	Rated Speed [min ⁻¹]	Max. Airflow [m ³ /min] [CFM]	Max. Static Pressure [Pa] [inchH ₂ O]	SPL [dB (A)]
9WF0624H401	24	0.15	6500	0.67 23.6	97 0.38	41

Oil Proof Fan



80 × 80 × 20 mm 9WFA type



Model No.	Rated Voltage [V]	Rated Current [A]	Rated Speed [min ⁻¹]	Max. Airflow [m ³ /min] [CFM]	Max. Static Pressure [Pa] [inchH ₂ O]	SPL [dB (A)]
9WFA0824G6001	24	0.15	6000	1.44 50.8	105 0.42	48



80 × 80 × 25 mm 9WF type



Model No.	Rated Voltage [V]	Rated Current [A]	Rated Speed [min ⁻¹]	Max. Airflow [m ³ /min] [CFM]	Max. Static Pressure [Pa] [inchH ₂ O]	SPL [dB (A)]
9WF0824S401	24	0.16	4000	1.2 42.4	58 0.23	38



92 × 92 × 25 mm 9WFA type



Model No.	Rated Voltage [V]	Rated Current [A]	Rated Speed [min ⁻¹]	Max. Airflow [m ³ /min] [CFM]	Max. Static Pressure [Pa] [inchH ₂ O]	SPL [dB (A)]
9WFA0924G4001	24	0.45	7350	2.85 100.6	250 1.0	56



92 × 92 × 25 mm 9WF type



Model No.	Rated Voltage [V]	Rated Current [A]	Rated Speed [min ⁻¹]	Max. Airflow [m ³ /min] [CFM]	Max. Static Pressure [Pa] [inchH ₂ O]	SPL [dB (A)]
9WF0924H401	24	0.13	3900	1.45 51.2	66 0.26	42.5



92 × 92 × 32 mm 9WFA type



Model No.	Rated Voltage [V]	Rated Current [A]	Rated Speed [min ⁻¹]	Max. Airflow [m ³ /min] [CFM]	Max. Static Pressure [Pa] [inchH ₂ O]	SPL [dB (A)]
9WFA0924G2001	24	0.58	9600	3.1 109.5	380 1.53	63



92 × 92 × 32 mm 9WF type



Model No.	Rated Voltage [V]	Rated Current [A]	Rated Speed [min ⁻¹]	Max. Airflow [m ³ /min] [CFM]	Max. Static Pressure [Pa] [inchH ₂ O]	SPL [dB (A)]
9WF0924S201	24	0.5	7300	2.8 98.9	255 1.02	58



120 × 120 × 38 mm 9WF type



Model No.	Rated Voltage [V]	Rated Current [A]	Rated Speed [min ⁻¹]	Max. Airflow [m ³ /min] [CFM]	Max. Static Pressure [Pa] [inchH ₂ O]	SPL [dB (A)]
9WF1224H101	24	0.32	3100	3.34 118	100 0.4	46

Long Life Fan



40×40×28 mm 9L type



Model No.	Rated Voltage [V]	Rated Current [A]	Rated Speed [min ⁻¹]	Max. Airflow [m ³ /min] [CFM]	Max. Static Pressure [Pa] [inchH ₂ O]	SPL [dB (A)]
9L0412J301	12	0.31	11700	0.52 18.4	206 0.827	48



60×60×25 mm 9LG type



Model No.	Rated Voltage [V]	Rated Current [A]	Rated Speed [min ⁻¹]	Max. Airflow [m ³ /min] [CFM]	Max. Static Pressure [Pa] [inchH ₂ O]	SPL [dB (A)]
9LG0612P4S001	12	0.67	11000	1.4 49.4	300 1.204	53
9LG0624P4S001	24	0.34	11000	1.4 49.4	300 1.204	53
9LG0648P4S001	48	0.18	11000	1.4 49.4	305 1.224	53



60×60×76 mm 9CRLA type



Model No.	Rated Voltage [V]	Rated Current [A]	Rated Speed [min ⁻¹]	Max. Airflow [m ³ /min] [CFM]	Max. Static Pressure [Pa] [inchH ₂ O]	SPL [dB (A)]
			Inlet Outlet			
9CRLA0612P0G001	12	3.0	16500 17800	2.1 74.1	1400 5.62	70



60×60×76 mm 9CRL type



Model No.	Rated Voltage [V]	Rated Current [A]	Rated Speed [min ⁻¹]	Max. Airflow [m ³ /min] [CFM]	Max. Static Pressure [Pa] [inchH ₂ O]	SPL [dB (A)]
			Inlet Outlet			
9CRL0612P0G001	12	2.3	16500 13000	2.0 70.6	1000 4.0	66



80×80×25 mm 9LG type



Model No.	Rated Voltage [V]	Rated Current [A]	Rated Speed [min ⁻¹]	Max. Airflow [m ³ /min] [CFM]	Max. Static Pressure [Pa] [inchH ₂ O]	SPL [dB (A)]
9LG0812P4J001	12	0.6	7400	2.07 73.0	177 0.71	49
9LG0824P4J001	24	0.28	7400	2.07 73.0	177 0.71	49



80×80×80 mm 9CRL type



Model No.	Rated Voltage [V]	Rated Current [A]	Rated Speed [min ⁻¹]	Max. Airflow [m ³ /min] [CFM]	Max. Static Pressure [Pa] [inchH ₂ O]	SPL [dB (A)]
			Inlet Outlet			
9CRL0812P8G001	12	5.3	12000 11300	4.5 158.9	1150 4.62	76



92×92×25 mm 9LG type



Model No.	Rated Voltage [V]	Rated Current [A]	Rated Speed [min ⁻¹]	Max. Airflow [m ³ /min] [CFM]	Max. Static Pressure [Pa] [inchH ₂ O]	SPL [dB (A)]
9LG0912P4J001	12	0.42	5000	2.2 77.7	105 0.42	44
9LG0924P4J001	24	0.21	5000	2.2 77.7	105 0.42	44

Long Life Fan



92 × 92 × 38 mm 9LG type



Model No.	Rated Voltage	Rated Current	Rated Speed	Max. Airflow		Max. Static Pressure		SPL
	[V]	[A]	[min ⁻¹]	[m ³ /min]	[CFM]	[Pa]	[inchH ₂ O]	[dB (A)]
9LG0912P1H001	12	2.0	9000	3.7	130.6	430	1.72	61
9LG0924P1H001	24	0.9	9000	3.7	130.6	430	1.72	61



120 × 120 × 38 mm 9LG type



Model No.	Rated Voltage	Rated Current	Rated Speed	Max. Airflow		Max. Static Pressure		SPL
	[V]	[A]	[min ⁻¹]	[m ³ /min]	[CFM]	[Pa]	[inchH ₂ O]	[dB (A)]
9LG1212P1G001	12	3.2	6550	7.0	247.1	370	1.48	62
9LG1224P1G001	24	1.6	6550	7.0	247.1	370	1.48	62
9LG1248P1G001	48	0.8	6550	7.0	247.1	370	1.48	62



120 × 120 × 38 mm 9GL type



Model No.	Rated Voltage	Rated Current	Rated Speed	Max. Airflow		Max. Static Pressure		SPL
	[V]	[A]	[min ⁻¹]	[m ³ /min]	[CFM]	[Pa]	[inchH ₂ O]	[dB (A)]
9GL1212G101	12	0.98	3600	3.88	137	135	0.542	49
9GL1224G101	24	0.5	3600	3.88	137	135	0.542	49
9GL1248G101	48	0.25	3600	3.88	137	135	0.542	49



140 × 140 × 38 mm 9LG type



Model No.	Rated Voltage	Rated Current	Rated Speed	Max. Airflow		Max. Static Pressure		SPL
	[V]	[A]	[min ⁻¹]	[m ³ /min]	[CFM]	[Pa]	[inchH ₂ O]	[dB (A)]
9LG1412P1A001	12	3.72	6900	8.0	282	516	2.07	68
9LG1424P1A001	24	1.86	6900	8.0	282	516	2.07	68
9LG1448P1A001	48	0.92	6900	8.0	282	516	2.07	68



140 × 140 × 51 mm 9LG type



Model No.	Rated Voltage	Rated Current	Rated Speed	Max. Airflow		Max. Static Pressure		SPL
	[V]	[A]	[min ⁻¹]	[m ³ /min]	[CFM]	[Pa]	[inchH ₂ O]	[dB (A)]
9LG1412P5G001	12	5.16	7500	9.0	318	655	2.63	69
9LG1424P5G001	24	2.58	7500	9.0	318	655	2.63	69
9LG1448P5G001	48	1.29	7500	9.0	318	655	2.63	69



ø172 × 150 × 51 mm 9L type



Model No.	Rated Voltage	Rated Current	Rated Speed	Max. Airflow		Max. Static Pressure		SPL
	[V]	[A]	[min ⁻¹]	[m ³ /min]	[CFM]	[Pa]	[inchH ₂ O]	[dB (A)]
109L5712H501	12	1.2	3050	6.4	226	137.2	0.551	52
109L5724H501	24	0.58	3050	6.4	226	137.2	0.551	52
109L5748H501	48	0.28	3050	6.4	226	137.2	0.551	52



Ø172×51 mm 9L type



Model No.	Rated Voltage	Rated Current	Rated Speed	Max. Airflow		Max. Static Pressure		SPL
	[V]	[A]	[min ⁻¹]	[m ³ /min]	[CFM]	[Pa]	[inchH ₂ O]	[dB (A)]
109L1712H501	12	1.2	3050	6.4	226	137.2	0.551	47
109L1724H501	24	0.58	3050	6.4	226	137.2	0.551	47
109L1748H501	48	0.28	3050	6.4	226	137.2	0.551	47

Long Life Fan

Wide Temperature Range Fan



40×40×28 mm 9GT type



Model No.	Rated Voltage	Rated Current	Rated Speed	Max. Airflow		Max. Static Pressure		SPL
	[V]	[A]	[min ⁻¹]	[m ³ /min]	[CFM]	[Pa]	[inchH ₂ O]	[dB (A)]
9GT0412P3J001	12	0.31	11700	0.52	18.4	206	0.827	48
9GT0424P3J001	24	0.15	11700	0.52	18.4	206	0.827	48



60×60×25 mm 9GT type



Model No.	Rated Voltage	Rated Current	Rated Speed	Max. Airflow		Max. Static Pressure		SPL
	[V]	[A]	[min ⁻¹]	[m ³ /min]	[CFM]	[Pa]	[inchH ₂ O]	[dB (A)]
9GT0612P4G001	12	0.56	10000	1.26	44.5	243	0.97	52
9GT0624P4G001	24	0.28	10000	1.26	44.5	243	0.97	52



80×80×25 mm 9GT type



Model No.	Rated Voltage	Rated Current	Rated Speed	Max. Airflow		Max. Static Pressure		SPL
	[V]	[A]	[min ⁻¹]	[m ³ /min]	[CFM]	[Pa]	[inchH ₂ O]	[dB (A)]
9GT0812P4S001	12	0.46	6700	1.86	65.7	143	0.57	46
9GT0824P4S001	24	0.22	6700	1.86	65.7	143	0.57	46



92×92×25 mm 9GT type



Model No.	Rated Voltage	Rated Current	Rated Speed	Max. Airflow		Max. Static Pressure		SPL
	[V]	[A]	[min ⁻¹]	[m ³ /min]	[CFM]	[Pa]	[inchH ₂ O]	[dB (A)]
9GT0912P4J001	12	0.42	5000	2.2	77.7	105	0.42	44
9GT0924P4J001	24	0.21	5000	2.2	77.7	105	0.42	44



92×92×38 mm 9GT type



Model No.	Rated Voltage	Rated Current	Rated Speed	Max. Airflow		Max. Static Pressure		SPL
	[V]	[A]	[min ⁻¹]	[m ³ /min]	[CFM]	[Pa]	[inchH ₂ O]	[dB (A)]
9GT0912P1M001	12	1.5	8100	3.3	116.6	315	1.26	58
9GT0924P1M001	24	0.75	8100	3.3	116.6	315	1.26	58



120×120×38 mm 9GT type



Model No.	Rated Voltage	Rated Current	Rated Speed	Max. Airflow		Max. Static Pressure		SPL
	[V]	[A]	[min ⁻¹]	[m ³ /min]	[CFM]	[Pa]	[inchH ₂ O]	[dB (A)]
9GT1212P1S001	12	2.2	5600	6.0	211.8	270	1.08	58
9GT1224P1S001	24	1.1	5600	6.0	211.8	270	1.08	58

G Proof Fan



120 × 120 × 38 mm 9GP type



Model No.	Rated Voltage	Rated Current	Rated Speed	Max. Airflow		Max. Static Pressure		SPL
	[V]	[A]	[min ⁻¹]	[m ³ /min]	[CFM]	[Pa]	[inchH ₂ O]	[dB (A)]
9GP1224P1G001	24	1.6	6550	7.0	247	370	1.48	62
9GP1248P1G001	48	0.8	6550	7.0	247	370	1.48	62



172 × 150 × 51 mm 9GP type



Model No.	Rated Voltage	Rated Current	Rated Speed	Max. Airflow		Max. Static Pressure		SPL
	[V]	[A]	[min ⁻¹]	[m ³ /min]	[CFM]	[Pa]	[inchH ₂ O]	[dB (A)]
9GP5724P5H001	24	5.0	8000	12.3	434	1000	4.02	77
9GP5748P5G001	48	5.0	10500	16.1	568	1600	6.43	83

Wide Temperature Range Fan / G Proof Fan

Centrifugal Fan



ø70×20 mm 9TD type



Model No.	Rated Voltage	Rated Current	Rated Speed	Max. Airflow		Max. Static Pressure		SPL
	[V]	[A]	[min ⁻¹]	[m ³ /min]	[CFM]	[Pa]	[inchH ₂ O]	[dB (A)]
9TD12P6G001	12	1.0	9200	1.13	39.9	560	2.24	61



ø100×25 mm 9TM type



Model No.	Rated Voltage	Rated Current	Rated Speed	Max. Airflow		Max. Static Pressure		SPL
	[V]	[A]	[min ⁻¹]	[m ³ /min]	[CFM]	[Pa]	[inchH ₂ O]	[dB (A)]
9TM24P4H01	24	0.44	6400	1.77	62.5	560	2.25	60
9TM48P4H01	48	0.22	6400	1.77	62.5	560	2.25	60



ø133×91 mm 9TJ type



Model No.	Rated Voltage	Rated Current	Rated Speed	Max. Airflow		Max. Static Pressure		SPL
	[V]	[A]	[min ⁻¹]	[m ³ /min]	[CFM]	[Pa]	[inchH ₂ O]	[dB (A)]
9TJ24P0H61	24	1.2	4150	6.39	226	395	1.59	61
9TJ48P0H01	48	0.55	4150	6.39	226	395	1.59	61



ø150×35 mm 9TN type



Model No.	Rated Voltage	Rated Current	Rated Speed	Max. Airflow		Max. Static Pressure		SPL
	[V]	[A]	[min ⁻¹]	[m ³ /min]	[CFM]	[Pa]	[inchH ₂ O]	[dB (A)]
9TN24P1H01	24	0.62	3800	3.83	135	410	1.65	59
9TN48P1H01	48	0.32	3800	3.83	135	390	1.57	59



ø175×69 mm 9TGA type



Model No.	Rated Voltage	Rated Current	Rated Speed	Max. Airflow		Max. Static Pressure		SPL
	[V]	[A]	[min ⁻¹]	[m ³ /min]	[CFM]	[Pa]	[inchH ₂ O]	[dB (A)]
9TGA24P0H001	24	4.8	4950	15.3	541	830	3.33	77
9TGA48P0G001	48	3.5	5700	17.6	622	1100	4.42	80



ø175×69 mm 9TG type



Model No.	Rated Voltage	Rated Current	Rated Speed	Max. Airflow		Max. Static Pressure		SPL
	[V]	[A]	[min ⁻¹]	[m ³ /min]	[CFM]	[Pa]	[inchH ₂ O]	[dB (A)]
9TG24P0G01	24	3.9	4700	14.0	494.7	885	3.55	73
9TG48P0G01	48	1.95	4700	14.0	494.7	885	3.55	73



ø221×71 mm 9TP type



Model No.	Rated Voltage	Rated Current	Rated Speed	Max. Airflow		Max. Static Pressure		SPL
	[V]	[A]	[min ⁻¹]	[m ³ /min]	[CFM]	[Pa]	[inchH ₂ O]	[dB (A)]
9TP24P0H001	24	3.2	3050	17.6	622	530	2.13	71
9TP48P0G001	48	2.75	3650	21	742	760	3.05	74

**225×99 mm 9TS type**

Model No.	Rated Voltage	Rated Current	Rated Speed	Max. Airflow		Max. Static Pressure		SPL
	[V]	[A]	[min ⁻¹]	[m ³ /min]	[CFM]	[Pa]	[inchH ₂ O]	[dB (A)]
9TS48P0G001	48	3.65	3550	28.1	992	861	3.46	74.5

**270×270×99 mm 9B1TP type**

Model No.	Rated Voltage	Rated Current	Rated Speed	Max. Airflow		Max. Static Pressure		SPL
	[V]	[A]	[min ⁻¹]	[m ³ /min]	[CFM]	[Pa]	[inchH ₂ O]	[dB (A)]
9B1TP24P0H001	24	3.2	3050	17.6	622	530	2.13	71
9B1TP48P0G001	48	2.75	3650	21.0	742	760	3.05	74

**270×270×119 mm 9B1TS type**

Model No.	Rated Voltage	Rated Current	Rated Speed	Max. Airflow		Max. Static Pressure		SPL
	[V]	[A]	[min ⁻¹]	[m ³ /min]	[CFM]	[Pa]	[inchH ₂ O]	[dB (A)]
9B1TS48P0G001	48	3.65	3550	28.1	992	861	3.46	74.5


52 × 15 mm 9BC type


Model No.	Rated Voltage	Rated Current	Rated Speed	Max. Airflow		Max. Static Pressure		SPL
	[V]	[A]	[min ⁻¹]	[m ³ /min]	[CFM]	[Pa]	[inchH ₂ O]	
109BC12GC7-1	12	0.12	6200	0.125	4.4	215	0.86	43
109BC24GC7-1	24	0.07	6200	0.125	4.4	215	0.86	43


76 × 20 mm 9BD type


Model No.	Rated Voltage	Rated Current	Rated Speed	Max. Airflow		Max. Static Pressure		SPL
	[V]	[A]	[min ⁻¹]	[m ³ /min]	[CFM]	[Pa]	[inchH ₂ O]	
9BD12SC6-1	12	0.28	4500	0.29	10.2	300	1.2	43
9BD24SC6-1	24	0.14	4500	0.29	10.2	300	1.2	43


76 × 30 mm 9BD type


Model No.	Rated Voltage	Rated Current	Rated Speed	Max. Airflow		Max. Static Pressure		SPL
	[V]	[A]	[min ⁻¹]	[m ³ /min]	[CFM]	[Pa]	[inchH ₂ O]	
109BD12HC2	12	0.37	3000	0.36	12.7	151.9	0.61	41.5
109BD24HC2	24	0.17	3000	0.36	12.7	151.9	0.61	41.5


97 × 33 mm 9BMC type


Model No.	Rated Voltage	Rated Current	Rated Speed	Max. Airflow		Max. Static Pressure		SPL
	[V]	[A]	[min ⁻¹]	[m ³ /min]	[CFM]	[Pa]	[inchH ₂ O]	
9BMC12P2G001	12	6.2	8200	1.85	65.3	1950	7.83	69
9BMC24P2G001	24	3.1	8200	1.85	65.3	1950	7.83	69


97 × 33 mm 9BMB type


Model No.	Rated Voltage	Rated Current	Rated Speed	Max. Airflow		Max. Static Pressure		SPL
	[V]	[A]	[min ⁻¹]	[m ³ /min]	[CFM]	[Pa]	[inchH ₂ O]	
9BMB12P2K01	12	3.4	6850	1.61	56.8	1280	5.14	66
9BMB24P2K01	24	1.62	6850	1.61	56.8	1280	5.14	66


97 × 33 mm 9BM type


Model No.	Rated Voltage	Rated Current	Rated Speed	Max. Airflow		Max. Static Pressure		SPL
	[V]	[A]	[min ⁻¹]	[m ³ /min]	[CFM]	[Pa]	[inchH ₂ O]	
109BM12GC2-1	12	0.6	3800	0.82	28.9	281	1.129	51.5
109BM24GC2-1	24	0.31	3800	0.82	28.9	281	1.129	51.5

**120 × 32 mm 9BFB type**

Model No.	Rated Voltage	Rated Current	Rated Speed	Max. Airflow		Max. Static Pressure		SPL
	[V]	[A]	[min ⁻¹]	[m ³ /min]	[CFM]	[Pa]	[inchH ₂ O]	[dB (A)]
9BFB12P2H003	12	2.3	3750	1.6	56.5	1250	5.02	62
9BFB24P2H003	24	1.1	3750	1.6	56.5	1250	5.02	62

**127 × 32 mm 9BJ type**

Model No.	Rated Voltage	Rated Current	Rated Speed	Max. Airflow		Max. Static Pressure		SPL
	[V]	[A]	[min ⁻¹]	[m ³ /min]	[CFM]	[Pa]	[inchH ₂ O]	[dB (A)]
109BJ12HC2	12	0.52	2400	0.78	27.5	205.8	0.826	46
109BJ24HC2	24	0.26	2400	0.78	27.5	205.8	0.826	46

**160 × 40 mm 9BG type**

Model No.	Rated Voltage	Rated Current	Rated Speed	Max. Airflow		Max. Static Pressure		SPL
	[V]	[A]	[min ⁻¹]	[m ³ /min]	[CFM]	[Pa]	[inchH ₂ O]	[dB (A)]
109BG12HC1	12	1.3	2300	1.62	57.2	313.6	1.259	55
109BG24HC1	24	0.62	2300	1.62	57.2	313.6	1.259	55

ACDC Fan



92 × 92 × 38 mm 9AD type



Model No.	Rated Voltage [V]	Rated Input [W]	Rated Speed [min ⁻¹]	Max. Airflow [m ³ /min] [CFM]	Max. Static Pressure [Pa] [inchH ₂ O]	SPL [dB (A)]
9AD0901H12	100 to 240	4.5	3850	1.5 53.0	90 0.36	40



120 × 120 × 38 mm 9AD type



Model No.	Rated Voltage [V]	Rated Input [W]	Rated Speed [min ⁻¹]	Max. Airflow [m ³ /min] [CFM]	Max. Static Pressure [Pa] [inchH ₂ O]	SPL [dB (A)]
9AD1201H12	100 to 240	4.4	3250	3.0 106	84 0.34	42



ø190 × 88 mm 9ADTU type



Model No.	Rated Voltage [V]	Rated Input [W]	Rated Speed [min ⁻¹]	Max. Airflow [m ³ /min] [CFM]	Max. Static Pressure [Pa] [inchH ₂ O]	SPL [dB (A)]
9ADTU11P0G001	115	150	4800	16.5 583	1200 4.82	72
9ADTU23P0G001	230	150	4800	16.5 583	1200 4.82	72



ø190 × 88 mm 9ADW1TU type



Model No.	Rated Voltage [V]	Rated Input [W]	Rated Speed [min ⁻¹]	Max. Airflow [m ³ /min] [CFM]	Max. Static Pressure [Pa] [inchH ₂ O]	SPL [dB (A)]
9ADW1TU11P0G001	115	150	4800	16.5 583	1200 4.82	72
9ADW1TU23P0G001	230	150	4800	16.5 583	1200 4.82	72



ø225 × 99 mm 9ADTS type



Model No.	Rated Voltage [V]	Rated Input [W]	Rated Speed [min ⁻¹]	Max. Airflow [m ³ /min] [CFM]	Max. Static Pressure [Pa] [inchH ₂ O]	SPL [dB (A)]
9ADTS11P0G001	115	155	3200	23.0 812	815 3.27	74
9ADTS23P0G001	230	155	3200	23.0 812	815 3.27	74



ø225 × 99 mm 9ADW1TS type



Model No.	Rated Voltage [V]	Rated Input [W]	Rated Speed [min ⁻¹]	Max. Airflow [m ³ /min] [CFM]	Max. Static Pressure [Pa] [inchH ₂ O]	SPL [dB (A)]
9ADW1TS11P0H001	115	140	3100	22.3 787	760 3.05	73
9ADW1TS23P0H001	230	140	3100	22.3 787	760 3.05	73

**270 × 270 × 119 mm 9ADB1TS type**

Model No.	Rated Voltage	Rated Input	Rated Speed	Max. Airflow		Max. Static Pressure		SPL [dB (A)]
	[V]	[W]	[min ⁻¹]	[m ³ /min]	[CFM]	[Pa]	[inchH ₂ O]	
9ADB1TS11P0G001	115	155	3200	23.0	812	815	3.27	74
9ADB1TS23P0G001	230	155	3200	23.0	812	815	3.27	74

**270 × 270 × 119 mm 9ADB1W1TS type****IP56**

Model No.	Rated Voltage	Rated Input	Rated Speed	Max. Airflow		Max. Static Pressure		SPL [dB (A)]
	[V]	[W]	[min ⁻¹]	[m ³ /min]	[CFM]	[Pa]	[inchH ₂ O]	
9ADB1W1TS11P0H001	115	140	3100	22.3	787	760	3.05	73
9ADB1W1TS23P0H001	230	140	3100	22.3	787	760	3.05	73

AC Fan



60×60×28 mm

Model No.	Voltage [V]	Input [W]	Rated Speed [min ⁻¹]	Max. Airflow [m ³ /min]	Max. Airflow [CFM]	Max. Static Pressure [Pa]	Max. Static Pressure [inchH ₂ O]	SPL [dB (A)]
109-180	100	5/4	2250/2700	0.27/0.33	9.5/11.7	11.8/18.6	0.047/0.075	24/26
109-183	115							



60×60×38 mm

Model No.	Voltage [V]	Input [W]	Rated Speed [min ⁻¹]	Max. Airflow [m ³ /min]	Max. Airflow [CFM]	Max. Static Pressure [Pa]	Max. Static Pressure [inchH ₂ O]	SPL [dB (A)]
109-130	100	6/5	2600/3150	0.33/0.4	11.7/14.1	16.3/23.3	0.065/0.094	28/30
109-133	115							



80×80×20 mm

Model No.	Voltage [V]	Input [W]	Rated Speed [min ⁻¹]	Max. Airflow [m ³ /min]	Max. Airflow [CFM]	Max. Static Pressure [Pa]	Max. Static Pressure [inchH ₂ O]	SPL [dB (A)]
109-210	100	6/5	2500/3000	0.44/0.53	15.5/18.7	23.5/31.4	0.094/0.126	26/31
109-213	115							



80×80×25 mm

Model No.	Voltage [V]	Input [W]	Rated Speed [min ⁻¹]	Max. Airflow [m ³ /min]	Max. Airflow [CFM]	Max. Static Pressure [Pa]	Max. Static Pressure [inchH ₂ O]	SPL [dB (A)]
109S050	100	9/7	2650/3100	0.63/0.76	22.3/26.9	27.5/38.3	0.11 /0.154	30/33
109S053	115							
109S051	200							
109S054	230							
109S030	100							
109S033	115							
109S031	200							
109S034	230							



80×80×38 mm

Model No.	Voltage [V]	Input [W]	Rated Speed [min ⁻¹]	Max. Airflow [m ³ /min]	Max. Airflow [CFM]	Max. Static Pressure [Pa]	Max. Static Pressure [inchH ₂ O]	SPL [dB (A)]
109-150	100	9/8	2700/3150	0.9/1.05	31.8/37.1	31.4/44.1	0.126/0.177	35/39
109-153	115							
109-151	200							
109-154	230							

The frequencies of 50/60 Hz are existing in Japan. Performance of AC fan varies depending on the frequency.
 Example: Rated speed 2250/2700 = 50 Hz → 2250, 60 Hz → 2700



80×80×42 mm

Model No.	Voltage [V]	Input [W]	Rated Speed [min ⁻¹]	Max. Airflow [m ³ /min] [CFM]	Max. Static Pressure [Pa] [inchH ₂ O]	SPL [dB (A)]		
109-040UL	100							
109-043UL	115	10/9	2650/3100	0.85/1.0	30.0/35.3	24.5/35.3	0.098/0.142	40/44
109-041UL	200							
109-044UL	230							
109-047UL*	100	4/3.5	1500/1500	0.43/0.43	15.2/15.2	8.8/ 8.8	0.035/0.035	24/24
109-033UL*	115							

*These are low-speed models.



92×92×25 mm

Model No.	Voltage [V]	Input [W]	Rated Speed [min ⁻¹]	Max. Airflow [m ³ /min] [CFM]	Max. Static Pressure [Pa] [inchH ₂ O]	SPL [dB (A)]		
109S091	100	8/7	2700/3100	0.95/1.1	33.6/38.9	39.2/49.0	0.157/0.197	35/38
109S093	115							
109S092	200	11/10						
109S094	230	10/9						
109S095	100	8/7	2400/2800	0.84/0.98	29.7/34.6	31.4/40.2	0.126/0.161	32/35
109S096*	100	7/6	1500/1700	0.55/0.65	19.4/23	12.5/16.3	0.05 /0.065	24/27
109S193*	115							
109S192*	200	8/7						
109S194*	230							

*These are low-speed models.



92×92×25 mm



Model No.	Voltage [V]	Input [W]	Rated Speed [min ⁻¹]	Max. Airflow [m ³ /min] [CFM]	Max. Static Pressure [Pa] [inchH ₂ O]	SPL [dB (A)]		
109S491	100	8/7	2700/3100	0.95/1.1	33.6/38.9	39.2/49.0	0.157/0.197	35/38
109S493	115							
109S492	200	11/10						
109S494	230	10/9						
109S495	100	8/7	2400/2800	0.84/0.98	29.7/34.6	31.4/40.2	0.126/0.161	32/35
109S496*	100	7/6	1500/1700	0.55/0.65	19.4/23	12.5/16.3	0.05 /0.065	24/27

*These are low-speed models.



120×120×25 mm

Model No.	Voltage [V]	Input [W]	Rated Speed [min ⁻¹]	Max. Airflow [m ³ /min] [CFM]	Max. Static Pressure [Pa] [inchH ₂ O]	SPL [dB (A)]		
109S085	100	13.5/12	2500/2900	1.95/2.3	68.9/81.3	48 /51.9	0.193/0.216	38/41
109S084	115							
109S088	200							
109S087	230							
109S081	100	9.5/8.5	2200/2350	1.7 /1.8	60.1/63.6	29.4/26.5	0.118/0.106	34/35
109S083	115							
109S082	200							
109S089	230							
109S086*	100	12/10	1400/1600	1.1 /1.25	38.9/44.2	14.7/18.6	0.059/0.075	24/27

*These are low-speed models.

AC Fan



120 × 120 × 25 mm

Sensor

Model No.	Voltage [V]	Input [W]	Rated Speed [min ⁻¹]	Max. Airflow [m ³ /min]	Max. Airflow [CFM]	Max. Static Pressure [Pa]	Max. Static Pressure [inchH ₂ O]	SPL [dB (A)]
109S485	100							
109S484	115	13.5/12	2500/2900	1.95/2.3	68.9/81.3	48 /51.9	0.193/0.216	38/41
109S488	200							
109S487	230							
109S486*	100	12/10	1400/1600	1.1 /1.25	38.9/44.2	14.7/18.6	0.059/0.075	24/27

*These are low-speed models.



120 × 120 × 38 mm

Model No.	Voltage [V]	Input [W]	Rated Speed [min ⁻¹]	Max. Airflow [m ³ /min]	Max. Airflow [CFM]	Max. Static Pressure [Pa]	Max. Static Pressure [inchH ₂ O]	SPL [dB (A)]
109S075UL	100							
109S074UL	115	18/16	2700/3100	2.5 /2.9	88.3/102.5	57.9/68.7	0.233/0.276	42/45
109S078UL	200							
109S072UL	230							
109S005	100							
109S005UL	100							
109S024	120							
109S024UL	115	14/12	2700/3100	2.35/2.7	83 / 95.4	55.9/65.7	0.224/0.264	40/43
109S008	200							
109S008UL	200							
109S025	230							
109S025UL	230							
109S029UL		14/12	2450/2700	2.15/2.35	76 / 83	44.1/49.0	0.177/0.197	38/40
109S013		100	1800/2000	1.55/1.75	54.8/ 60.8	23.5/26.4	0.094/0.106	30/32
109S013UL	13/11							
109S006 *	7/7							
109S006UL *	115	10/10	1800/1900	1.56/1.64	55 / 57.9	20 /20.6	0.08 /0.083	30/31
109S010 *	200	7/7	1650/1700	1.45/1.5	51.2/ 53	17.6/17.6	0.071/0.071	28/28
109S010UL *	240	11/11	1800/1950	1.58/1.68	55.8/ 59.3	20.6/21.6	0.083/0.087	30/32

*These are low-speed models.



120 × 120 × 38 mm

Sensor

Model No.	Voltage [V]	Input [W]	Rated Speed [min ⁻¹]	Max. Airflow [m ³ /min]	Max. Airflow [CFM]	Max. Static Pressure [Pa]	Max. Static Pressure [inchH ₂ O]	SPL [dB (A)]
109S405UL	100							
109S424UL	115	14/12	2700/3100	2.35/2.7	83 / 95.4	55.9/65.7	0.224/0.264	40/43
109S408UL	200							
109S425UL	230							
109S429UL	100		2450/2700	2.15/2.35	76 / 83	44.1/49.0	0.177/0.197	38/40
109S406UL*		7/6	1650/1700	1.45/1.5	51 / 53	17.7/17.7	0.071/0.071	28/28
109S475UL	100							
109S474UL	115	18/16	2700/3100	2.5 /2.9	88.3/102.4	57.9/68.7	0.233/0.276	42/45
109S478UL	200							
109S472UL	230							

*These are low-speed models.

The frequencies of 50/60 Hz are existing in Japan. Performance of AC fan varies depending on the frequency.
 Example: Rated speed 2250/2700 = 50 Hz → 2250, 60 Hz → 2700



160×160×51 mm

Model No.	Voltage [V]	Input [W]	Rated Speed [min ⁻¹]	Max. Airflow [m ³ /min] [CFM]	Max. Static Pressure [Pa] [inchH ₂ O]	SPL [dB (A)]
109-601	100					
109-604	115	37.5/33	2850/3350	7.2 /8.5	254.4/300.4	156.8/166.6
109-602	200					
109-603	230					



160×160×51 mm



Model No.	Voltage [V]	Input [W]	Rated Speed [min ⁻¹]	Max. Airflow [m ³ /min] [CFM]	Max. Static Pressure [Pa] [inchH ₂ O]	SPL [dB (A)]
109-641	100					
109-644	115	37.5/33	2850/3350	7.2 /8.5	254.4/300.4	156.8/166.6
109-642	200					
109-643	230					



φ172×150×51 mm

Model No.	Voltage [V]	Input [W]	Rated Speed [min ⁻¹]	Max. Airflow [m ³ /min] [CFM]	Max. Static Pressure [Pa] [inchH ₂ O]	SPL [dB (A)]
109S301	100					
109S304	115	27/25	2900/3500	5.3 /6.4	187.3/226.1	147/196
109S302	200					
109S303	230					



φ172×51 mm

Model No.	Voltage [V]	Input [W]	Rated Speed [min ⁻¹]	Max. Airflow [m ³ /min] [CFM]	Max. Static Pressure [Pa] [inchH ₂ O]	SPL [dB (A)]
109-311	100					
109-314	115	27/25	2900/3500	5.3 /6.4	187.3/226.1	147/196
109-312	200					
109-313	230					

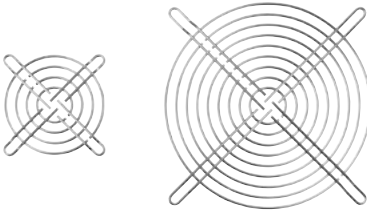


φ172×51 mm



Model No.	Voltage [V]	Input [W]	Rated Speed [min ⁻¹]	Max. Airflow [m ³ /min] [CFM]	Max. Static Pressure [Pa] [inchH ₂ O]	SPL [dB (A)]
109-371	100					
109-374	115	27/25	2900/3500	5.3 /6.4	187.3/226.1	147/196
109-372	200					
109-373	230					

Finger Guards



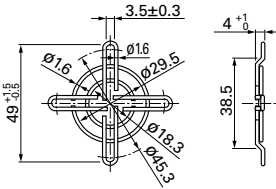
High quality genuine finger guard prevents fans from inhaling dust and can enhance safety.

We recommend the use of the finger guard for stable operation. There is no significant difference in the airflow - static pressure characteristic when using the finger guard.

40 mm sq. type

Model no.	Surface treatment	Mass (g)
109-059	Nickel-chrome plating (silver)	7
109-059H	Cation electropainting (black)	

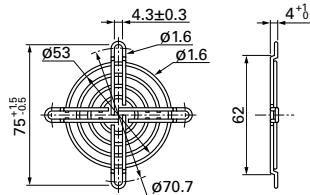
Inlet side, Outlet side



60 mm sq. type

Model no.	Surface treatment	Mass (g)
109-139E	Nickel-chrome plating (silver)	14.5
109-139H	Cation electropainting (black)	

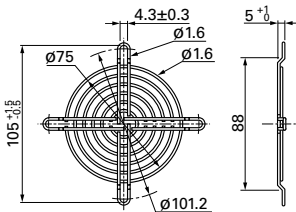
Inlet side, Outlet side



80 mm sq. type

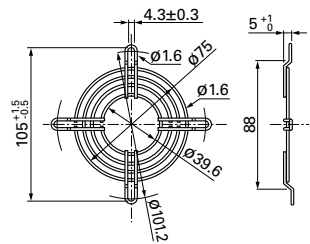
Model no.	Surface treatment	Mass (g)
109-049E	Nickel-chrome plating (silver)	21
109-049H	Cation electropainting (black)	

Inlet side, Outlet side



Model no.	Surface treatment	Mass (g)
109-049C	Nickel-chrome plating (silver)	17

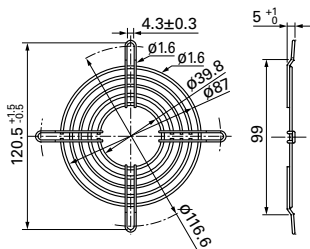
Outlet side



92 mm sq. type

Model no.	Surface treatment	Mass (g)
109-099C	Nickel-chrome plating (silver)	22

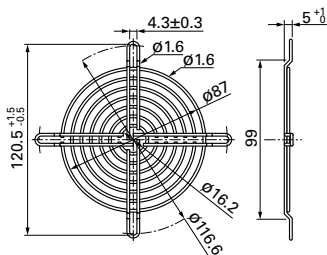
Outlet side



92 mm sq., °100 mm type

Model no.	Surface treatment	Mass (g)
109-099E	Nickel-chrome plating (silver)	29
109-099H	Cation electropainting (black)	

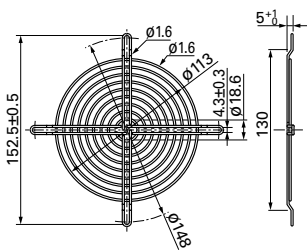
Inlet side, Outlet side



120 mm sq. type

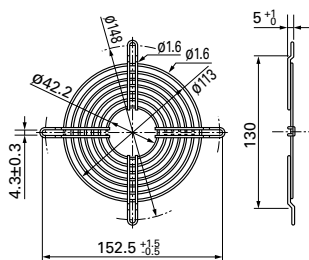
Model no.	Surface treatment	Mass (g)
109-019E	Nickel-chrome plating (silver)	42
109-019K	Cation electropainting (black)	

Inlet side, Outlet side



Model no.	Surface treatment	Mass (g)
109-019C	Nickel-chrome plating (silver)	32
109-019H	Cation electropainting (black)	

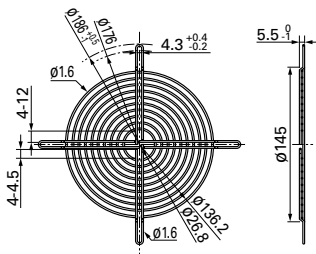
Outlet side



140 mm sq. type

Model no.	Surface treatment	Mass (g)
109-719	Nickel-chrome plating (silver)	51
109-719H	Cation electropainting (black)	

Inlet side, Outlet side



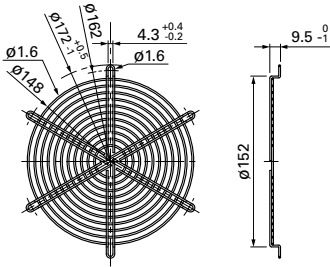
Finger Guards

°172 mm Sidecut, Round type

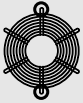
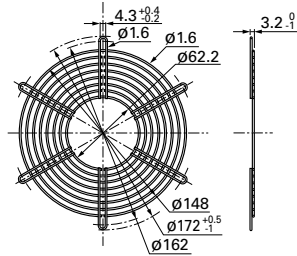
Model no.	Surface treatment	Mass (g)
109-319E	Nickel-chrome plating (silver)	69
109-319H	Cation electropainting (black)	

Model no.	Surface treatment	Mass (g)
109-320	Nickel-chrome plating (silver)	53

Inlet side, Outlet side



Outlet side

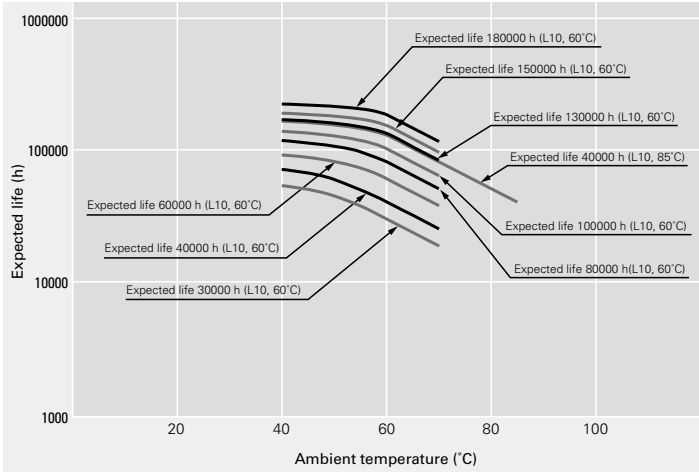


°172 mm type: (model: 109-319E, 109-319H, 109-320)
Please install at the point of symmetry.

Reliability and expected life

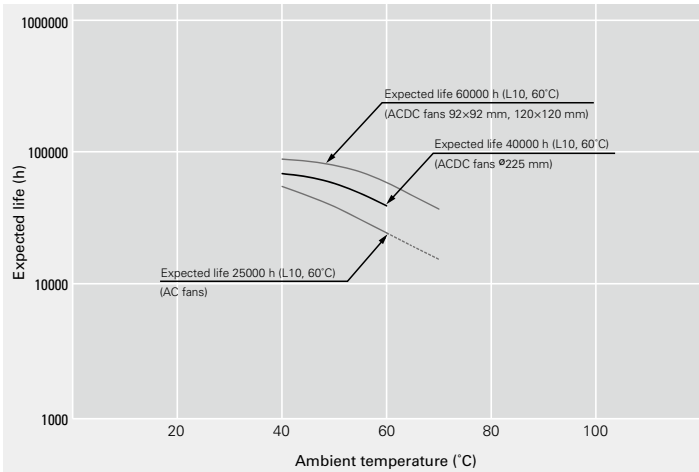
A cooling fan generally cools itself as well. The temperature rise of the motor is relatively low and the temperature rise of the grease in the bearings is also low, so expected life is longer than general some other motors. Since the service life of bearings is a theoretical value that applies when they are ideally lubricated, the life of lubricant can be regarded as expected life of the fan. DC fan consumes less power and its temperature rise of bearing is very low. When the measurement conditions are: L10 (the remaining product life in the lifespan test is 90%), with an atmospheric temperature of 60 degrees, at the rated voltage, and continuously run in a free air state. The table below indicates the relationship between ambient temperature and expected life estimated on the basis of our life tests and same other tests conducted by SANYO DENKI.

Expected life of DC Fans



Rated voltage, continuously run in a free air state, survival rate of 90%

Expected life of AC Fans



Rated voltage, continuously run in a free air state, survival rate of 90%

Operating precautions

Temperature conditions

Operating temperature: Refer to the specifications table for each model.

Storage temperature: -20 to +70°C/-30 to +70°C (Varies for each model/Non condensing)

Rapid change in temperature may cause condensation. Prevent condensation when storing. Condensation may affect lubrication performance and insulation.

Handling precautions

The fan motor is equipped with a precision ball bearing. Therefore, please handle the motors carefully in order not to shock the bearings.

Recommended screw torque

This shows the recommended values for the screw torque when installing the fans. If the tightening torque is higher than the recommended values, the fan can be deformed or damaged. Use care when tightening.

Also, be sure to always use a fan with a ribbed structure when using screws to pass through and secure the fan.

DC fan

Fan mounting hole diameter [mm]	Nominal screw diameter	Recommended screw torque
ø3.5, ø3.7	M3	0.44 N·m max.
ø4.3, ø4.5	M4	0.78 N·m max.
ø4.3, ø4.5	M4	0.98 N·m max. (ø172 mm×51 mm, ø172 mm×150 mm×51 mm, ø200×70 mm)

AC fan

Fan mounting hole diameter [mm]	Nominal screw diameter	Recommended screw torque
ø3.5, ø3.7	M3	0.44 N·m max.
ø4.3	M4	0.58 N·m max. (120 mm×120 mm max.)
ø4.3	M4	0.78 N·m max. (ACDC fan, ø172 mm)
ø5.5	M4, M5	0.78 N·m max. (160 mm×160 mm)

■ ECO PRODUCTS



SANYO DENKI's ECO PRODUCTS are designed with the concept of lessening impact on the environment in the process from product development to waste.

The product units and packaging materials are designed for reduced environmental impact. We have established

our own assessment criteria on the environmental impacts applicable to all processes, ranging from design to manufacture.

Those products that satisfy the criteria are accredited as ECO PRODUCTS.

- Please read the "Safety Precautions" on our website once you have decided on a product for use.
- This product may be regulated under export and trade control regulations of each country. During export of each product, compliance to the export regulations of each country is highly recommended.
- To protect against electrolytic corrosion that may occur in locations with strong electromagnetic noise, we provide fans that are unaffected by electrolytic corrosion.

<https://www.sanyodenki.com>

SANYO DENKI CO., LTD.	TEL: +81 3 5927 1020
3-33-1 Minami-Otsuka, Toshima-ku, Tokyo 170-8451, Japan	
Singapore Branch	TEL: +65 6223 1071
988 Toa Payoh North, #04-08, Singapore 319002	
Jakarta Representative Office	TEL: +62 21 252 3202
Summitmas II 4th Floor, Jl. Jend. Sudirman Kav.61-62, Jakarta 12190, Indonesia	
SANYO DENKI EUROPE SA.	TEL: +33 1 48 63 26 61
P.A. PARIS NORD II, 48 Allée des Erables-VILLEPINTE, BP.57286, F-95958 ROISSY CDG CEDEX, France	
Poland Branch	TEL: +48 12 427 30 73
ul. Wodociagowa 56 30-205 Kraków, Polska	
SANYO DENKI AMERICA, INC.	TEL: +1 310 783 5400
468 Amapola Avenue Torrance, CA 90501, U.S.A.	
SANYO DENKI SHANGHAI CO., LTD.	TEL: +86 21 6235 1107
Room 2106-2110, Bldg A, Far East International Plaza, No.319, Xianxia Road, Shanghai, 200051, China	
SANYO DENKI (H.K.)CO., LIMITED	TEL: +852 2312 6250
Room 1603, 16/F, South Tower, Concordia Plaza, 1 Science Museum Road, TST East, Kowloon, Hong Kong	
SANYO DENKI TAIWAN CO., LTD.	TEL: +886 2 2511 3938
N-711, 7F, Chia Hsin 2nd Bldg., No.96, Sec.2, Zhongshan N. Rd., Taipei 10449, Taiwan	
SANYO DENKI GERMANY GmbH	TEL: +49 6196 76113 0
Frankfurter Strasse 80-82, 65760 Eschborn, Germany	
SANYO DENKI KOREA CO., LTD.	TEL: +82 2 773 5623
15F, KDB Building, 372, Hangang-daero, Yongsan-gu, Seoul, 04323, Korea	
Busan Branch	TEL: +82 51 796 5151
8F, CJ Korea Express Building, 119, Daegyo-ro, Jung-gu, Busan, 48943, Korea	
SANYO DENKI (Shenzhen)CO., LTD.	TEL: +86 755 3337 3868
04B-07, 11F, avic Center, No.1018 Huaifu Road, Futian District, Shenzhen, 518031, China	
Chengdu Branch	TEL: +86 28 8661 6901
Room2105B, Block A, Times Plaza, 2 Zongfu Road, Jinjiang District, Chengdu, 610016, China	
SANYO DENKI (THAILAND)CO., LTD.	TEL: +66 2261 8670
388 Exchange Tower, 25th Floor, Unit 2501-1, Sukhumvit Road, Klongtoey, Klongtoey, Bangkok 10110 Thailand	
SANYO DENKI INDIA PRIVATE LIMITED	TEL: +91 44 420 384 72
#14 (Old No.6/3), Avenue Road, Nungambakkam, Chennai - 600034, Tamil Nadu, India	
SANYO DENKI (Tianjin)CO., LTD.	TEL: +86 22 2320 1186
Room AB 16th Floor TEDA Building, No. 256 Jie Fang Nan Road, Hexi District, Tianjin 300042 China	
Beijing Branch	TEL: +86 10 5861 1508
Room1807, Gaohe Lanfeng Buliding, No.98 East Third Ring South Road, Chaoyang District, Beijing 100122 China	

The names of companies and/or their products specified in this catalog are the trade names, and/or trademarks and/or registered trademarks of such respective companies.

"San Ace" is a trademark of SANYO DENKI CO., LTD.

Specifications are subject to change without notice.