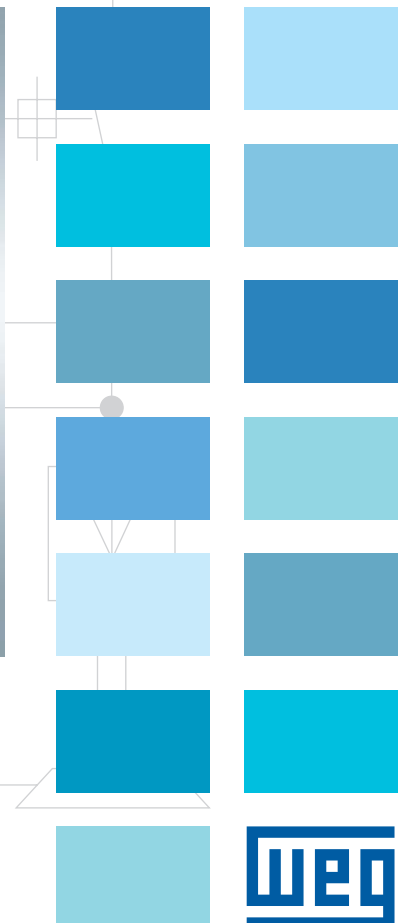
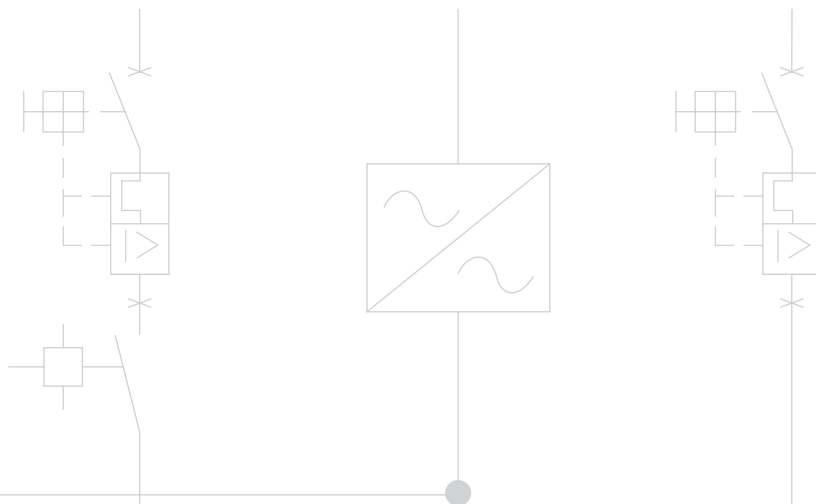


SRW01

Smart Relay



SRW01

The SRW01 is a low-voltage electric motor management system with state-of-the-art technology and network communication capabilities. Additionally, its modular concept allows to be used in various applications.



Versatility

The SRW01 supports the following communication networks protocols: DeviceNet, Modbus-RTU, and ProfiBus-DP. The communication modules can be easily exchanged due to plug-and-play capabilities. A HMI also can be used for quick system monitoring and relay parameterization. Additionally, the SRW01 provides a USB port for relay monitoring and programming through PC when using WLP software. The SRW01 includes a thermal memory circuit in order to maintain a motor thermal image, even if power supply is removed.

Flexibility

The SRW01 modular concept allows easy functionality expansions. The control unit can also be mechanically assembled with the control measurement unit or separately (up to 2 meters), allowing system integration versatility.

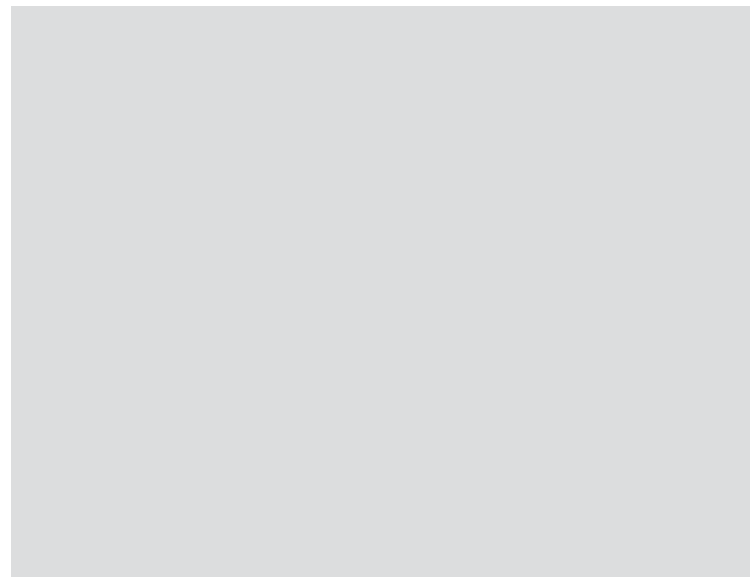
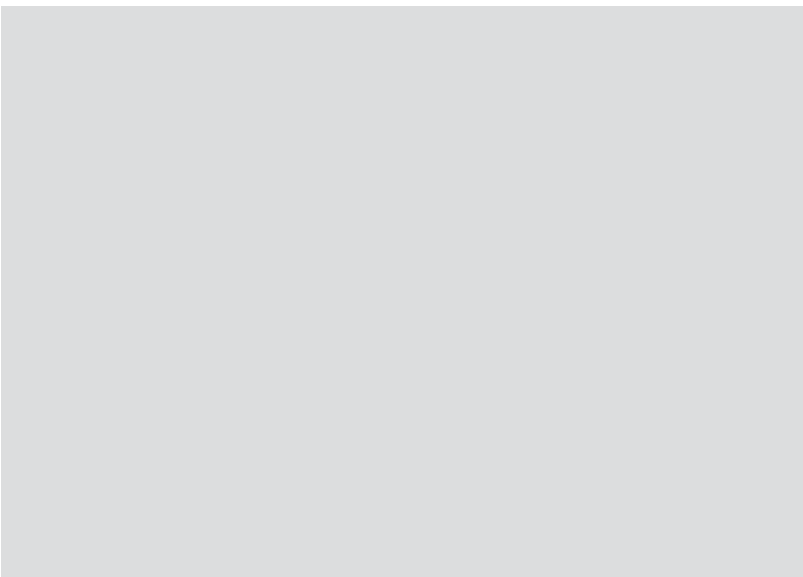
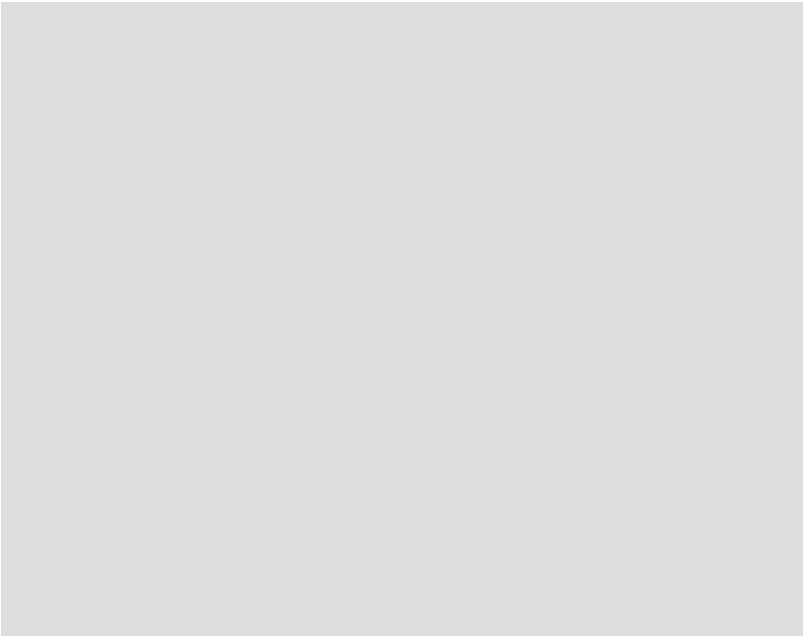
The relay offers pre-programmed operating modes that perform various types of standard starting or monitoring conditions. Its friendly parameterization mode allows users to program the relay according to their needs.



Modular Design

The SRW01 incorporates a main control unit (SRW01-UC) and a current measurement unit (SRW01-UMC) to provide a flexible assembly options.

The SRW01-UC and SRW01-UMC are electrically connected using the SRW01-CB flat cable.



The interface with the relay may be performed in three ways:

- Via Fieldbus (ModBus, DeviceNet, Profibus)
- Via SRW01-IHM
- Via software – WLP (USB)

Through Fieldbus, the user can operate, monitor, and configure the SRW01 remotely, via PLC or supervisory system.