

Diaphragm In-Line Seals For Flange Connections Flange Type, Model 981.27

WIKA Data Sheet DS 98.27

Applications

- For direct, permanent installation in pipelines
- For flowing, pure and aggressive media
- Chemical process industry
- Petrochemical industry

Special Features

- Completely round, no corners and edges, European Patent No. 0629846
- For direct installation between two flanges
- Wide choice of special materials

Description

Process connection

for flanges following EN 1092-1 / ASME B 16.5
DN 25, 40, 50, 80, 100 or 1", 2", 3", 4"
Nominal size: see drawing and tables (DN)
Sealing face, Form B1 or ASME RF 125 ... 250 AA

Pressure rating

PN 16/40 or Class 150/300

Pressure ranges

preferably mounted to pressure gauges
NS 63, 100, 160 or pressure transmitters,
Pressure ranges 0 ... 0.6 to 0 ... 40 bar

Body and material of wetted parts

Stainless steel (AISI 316L)

Measuring instrument connection

Pressure gauge or transmitter directly welded,
process pressure transmitter with threaded adapter



Diaphragm In-Line Seals for Flange Connections,
Model 981.27

Options

Process connection

- Larger nominal sizes
- Other flange connections on request
- Sealing faces per EN 1092-1, form B2 or per ASME B 16.5, RF 125 AA, 500 AA, RFSF; EN 1092-1 groove and tongue; projection and recess; ASME B 16.5 snap ring groove form RJF (limited for special materials, please request)
- Flame arrester approved for Zone 0

Material of wetted parts

- Stainless steel 1.4571, 1.4435, 1.4541, Monel, Hastelloy B3, C4, C22, C276, tantalum
- PFA coating max. +260 °C
- ECTFE (Halar®) coating max. +150 °C

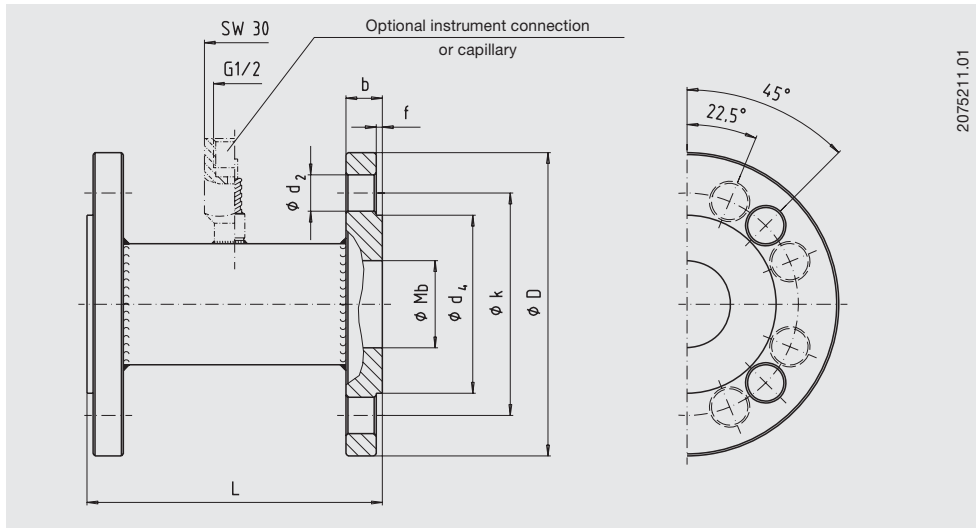
Measuring instrument connection

- Capillary, when ordering please specify: length of capillary
- Cooling tower (for directly mounted gauge when fluid temperature > +140 °C)

Capillary

- Custom lengths between 1 and 15 m
- Soft polyethylene or PTFE armour

Dimensions in mm



Flange connection following EN 1092-1

DN in mm	PN	D	b	d ₂	k	f	d ₄	No. of bolt holes	L	Mb ¹⁾
25	40	115	18	14	85	2	68	4	114	28.5
40	40	150	18	18	110	3	88	4	146	43
50	40	165	20	18	125	3	102	4	156	54.5
80	40	200	24	18	160	3	138	8	166	82.5
100	16	220	20	18	180	3	158	8	166	107
100	40	235	24	22	190	3	162	8	166	107

1) WIKA standard diameter, other pipe diameters and nominal sizes on request.

Flange connection per ASME B 16.5

NPS	Class	D	b	d ₂	k	f	d ₄	No. of bolt holes	L	Mb ¹⁾
1	150	110	14.5	16	79.5	2	51	4	114	26.6
1	300	125	17.5	20	89	2	51	4	114	26.6
2	150	150	19.5	20	120.5	2	92	4	156	52.5
2	300	165	22.5	20	127	2	92	8	156	52.5
3	150	190	24	20	152.5	2	127	4	166	78
3	300	210	29	22	168.5	2	127	8	166	78
4	150	230	24	20	190.5	2	158	8	166	102.3
4	300	255	32	22	200	2	158	8	166	102.3

1) WIKA standard diameter, other pipe diameters and nominal sizes on request.

Ordering information

Model / Process connection (standard, nominal size, pressure rating, sealing face form) / Material of wetted parts / Instrument connection: direct assembly or via capillary, capillary length / System fill fluid / Assembly on pressure measuring instrument model... / Process conditions: application, process temperature max. and min., ambient temperature max. and min.

Modifications may take place and materials specified may be replaced by others without prior notice.
Specifications and dimensions given in this leaflet represent the state of engineering at the time of printing.

