


RES-A

TIIS Exd IIB+H2T6

Explosion-Safe Revolving Warning Light



-  **Bulb**
- Ø224**
- IP65**
- Explosion-Safe**

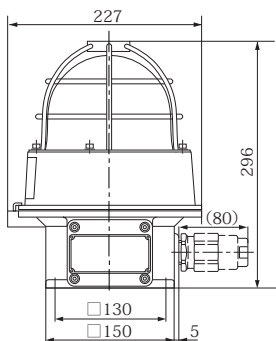
Robust Heavy Duty Revolving Warning Light.

FEATURES

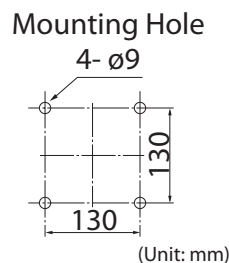
- ϕ 224mm Diameter.
- Rotating parabolic reflector to enhance visibility from a distance.
- Upright, inverted, and sideways installation allowed for indoors; and upright for outdoors only.
- Main body is made of Aluminum Alloy Die-cast with silver-colored baked enamel finish.
- Dome is made from superior weather-resistant and light-translucent acrylic resin.
- Available Colors are Red, Amber, Green, and Blue.

*Cable Glands are optional parts and need to be ordered separately.

Dimensions



Mounting Dimensions



Specifications

Model	Rated Voltage	Current	Flash Rate (fpm)	Bulb		Mass
				Ratings	Repl. No.	
RES-12A	DC 12V	0.9A	170	12V 10W	9	6.5kg
RES-24A	DC 24V	0.5A		24V 10W	10	
RES-48A	DC 48V	0.3A		48V 10W	11	
RES-100A	AC 100V - 110V	0.1A	170	12V 5W	12	
RES-120A	AC 115V - 120V					
RES-220A	AC 200 - 220V	0.05A				
RES-240A	AC 230 - 240V					

Bulb: G18 BA155

© Special Order

