

| | |
|---|---|
| Type | C2-A2x/ ... V Standard relay, 2 change-over contacts |
| Maximum contact load | 10 A/250 V AC-1 0,5 A/110 V DC-1 10 A/30 V DC-1 0,2 A/220 V DC-1 |
| Recommended minimum contact load | 10 mA/10 V Code 0, 9 5 mA/5 V Code 8 |

| | | | |
|-----------------------------------|-----------|--------|-----------------|
| Contacts | | | |
| Material | Standard | Code 0 | AgNi |
| | Optional | Code 8 | AgNi + 10 μ Au |
| | Optional | Code 9 | AgNi + 0,2 μ Au |
| Max. switching current | 10 A | | |
| Max. peak inrush current (20 ms.) | 30 A | | |
| Max. switching voltage | 250 V | | |
| Max. AC load (Fig 1 1) | 2,5 kVA | | |
| Max. DC load | See Fig 2 | | |

| | | | |
|-----------------|-----------------------------|--|--|
| Coils | | | |
| Coil resistance | see table; tolerance ± 10 % | | |
| Pull-in voltage | ≤ 0,8 x U _N | | |
| Pull-in voltage | ≥ 0,1 x U _N | | |
| Nominal power | 2,2 VA (AC)/1,3 W (DC) | | |

| | | | | | | |
|--------------|------------|----------|-----------|------------|----------|-----------|
| Table | | | | | | |
| | VAC | Ω | mA | VDC | Ω | mA |
| | 24 | 67 | 92 | 24 | 443 | 54 |
| | 48 | 296 | 46 | 48 | 1K8 | 27 |
| | 115 | 1K7 | 19 | 110 | 9K | 12 |
| | 230 | 7K1 | 9,5 | 220 | 36K1 | 6 |

| | |
|--------------------------------|-----------------|
| Insulation | Volt rms, 1 min |
| Open contact | 1000 V |
| Between adjacent poles | 2,5 kV |
| Between contacts and coil | 2,5 kV |
| Insulation resistance at 500 V | ≥ 1 GΩ |
| Insulation, IEC 61810-1 | 2,5 kV/3 |

| | |
|---------------------------------------|--------------------------------------|
| Specifications | |
| Ambient temperature operation/storage | -40 (no ice)...60 °C / -40 ... 80 °C |
| Pick-up time + bounce time | 16 ms/≤ 3 ms |
| Release time + bounce time | 8 ms/≤ 1 ms |
| Mechanical life ops | AC: 10 Mill./DC: 20 Mill. |
| DC voltage endurance at rated load | ≥ 100000 ops. switching cycles |
| Operating frequency at nominal load | ≤ 1200/ops/h |
| Protection degree | IP40 |
| Weight | 79 g |

| | | | |
|--|--------------------------|--------------------------|--------------------------|
| Standard types | | | |
| VAC 50 Hz/60 Hz: 24, 48, 115 (120), 230 (240) | C2-A20/AC ... V | C2-A28/AC ... V | C2-A29AC ... V |
| LED | C2-A20X/AC ... V | C2-A28X/AC ... V | C2-A29X/AC ... V |
| VDC 24, 48, 110, 220 | C2-A20/DC ... V | C2-A28/DC ... V | C2-A29/DC ... V |
| LED | C2-A20X/DC ... V | C2-A28X/DC ... V | C2-A29X/DC ... V |
| Free wheeling diode | C2-A20DX/DC ... V | C2-A28DX/DC ... V | C2-A29DX/DC ... V |
| Polarity and free wheeling diode | C2-A20FX/DC ... V | C2-A28FX/DC ... V | C2-A29FX/DC ... V |
| AC/DC bridge rectifier 24 V, 48 V, 60 V | C2-A20BX/UC ... V | C2-A28BX/UC ... V | C2-A29BX/UC ... V |

"..." Enter the voltage for full type designation

| | |
|---------------------------------------|--------------------------------------|
| Accessories | |
| Socket: | S2-B, S2-S, S2-L, S2-P, S2-P0 |
| Optional accessories (blanking plug): | SO-NP, SO-OP |
| Retaining clip, plastic: | S30-CM |



Connection diagram

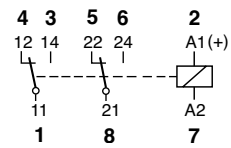


Fig. 1 AC voltage endurance

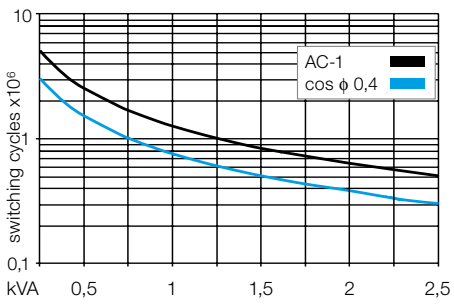
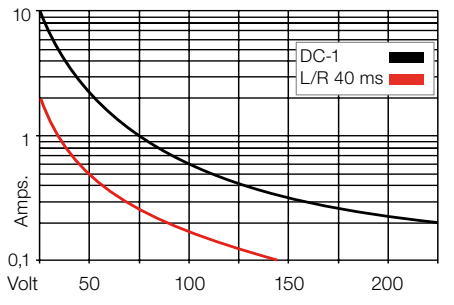
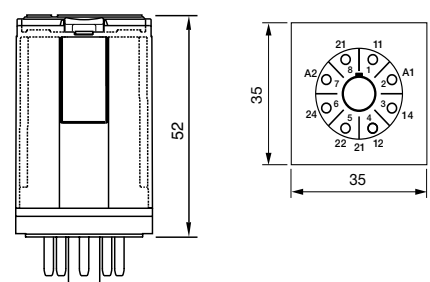


Fig. 2 DC load limit curve



Dimensions [mm]



Technical approvals, conformities



| | | | | |
|---|--|---------------|-----------------|-------------|
| Type | C2-T2x/ ... V Standard relay for low level 2 Change-over contacts | | | |
| Maximum contact load | 6 A/250 V | AC-1 | 6 A/30 V | DC-1 |
| Recommended minimum contact load | 5 mA/5 V | Code 1 | | |
| | 1 mA/5 V | Code 2 | | |

| | | | | |
|--------------------------------|------------|--------|-----------------|--|
| Contacts | | | | |
| Material | Standard | Code 1 | AgNi + 0,2 μ Au | |
| | Optional | Code 2 | AgNi + 10 μ Au | |
| Rated current | 6 A | | | |
| Switch-on current max. (20 ms) | 15 A | | | |
| Switching voltage max. | 250 V | | | |
| AC load (Fig 1) | 1,2 kVA | | | |
| DC load | see Fig. 2 | | | |

| | | | | |
|-----------------|-----------------------------|--|--|--|
| Coil | | | | |
| Coil resistance | see table; tolerance ± 10 % | | | |
| Pick-up voltage | ≤ 0,8 × U _N | | | |
| Release voltage | ≥ 0,1 × U _N | | | |
| Nominal power | 2,2 VA (AC)/1,3 W (DC) | | | |

| | | | | | | |
|-------------------|------------|----------|-----------|------------|----------|-----------|
| Coil table | VAC | Ω | mA | VDC | Ω | mA |
| | 24 | 67 | 92 | 24 | 443 | 54 |
| | 48 | 296 | 46 | 48 | 1K8 | 27 |
| | 115 | 1K7 | 19 | 110 | 9K | 12 |
| | 230 | 7K1 | 9,5 | 220 | 36K1 | 6 |

| | |
|--------------------------------|-----------------|
| Insulation | Volt rms, 1 min |
| Contact open | 1000 V |
| Contact/contact | 2,5 kV |
| Contact/coil | 2,5 kV |
| Insulation resistance at 500 V | ≥ 1 GΩ |
| Insulation, IEC 61810-1 | 2,5 kV/3 |

| | |
|---------------------------------------|--------------------------------------|
| Specifications | |
| Ambient temperature operation/storage | -40 (no ice)...60 °C / -40 ... 80 °C |
| Pick-up time/bounce time | 16 ms/≤ 3 ms |
| Release time/bounce time | 8 ms/≤ 1 ms |
| Mechanical life ops | AC: 10 Mill./DC: 20 Mill. |
| DC voltage endurance at rated load | ≥ 100000 switching cycles |
| Switching frequency at rated load | ≤ 1200/ops/h |
| Protection class | IP40 |
| Weight | 79 g |

| | | |
|--|--|--|
| Standard types | | |
| VAC 50 Hz/60 Hz: 24, 48, 115 (120), 230 (240) LED | C2-T21/AC ... V C2-T21X/AC ... V | C2-T22/AC ... V C2-T22X/AC ... V |
| VDC 24, 48, 110, 220 LED | C2-T21/DC ... V C2-T21X/DC ... V | C2-T22/DC ... V C2-T22X/DC ... V |
| Free wheeling diode | C2-T21DX/DC ... V C2-T21FX/DC ... V | C2-T22DX/DC ... V C2-T22FX/DC ... V |
| Polarity and free wheeling diode | | |
| AC/DC bridge rectifier 24 V, 48 V, 60 V | C2-T21BX/UC ... V | C2-T22BX/UC ... V |

"..." Enter the voltage for full type designation

| | |
|---------------------------------------|--------------------------------------|
| Accessories | |
| Socket: | S2-B, S2-S, S2-L, S2-P, S2-P0 |
| Optional accessories (blanking plug): | SO-NP, SO-OP |
| Retaining clip, plastic: | S30-CM |



Connection diagram

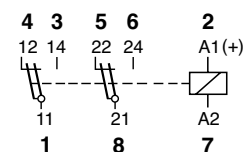


Fig. 1 AC voltage endurance

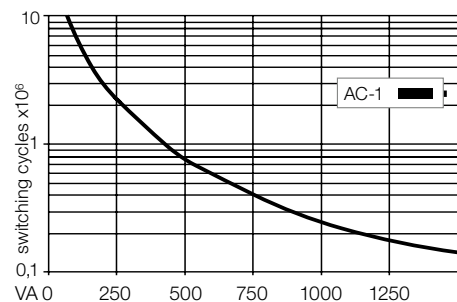
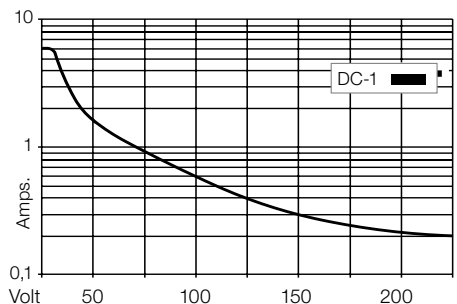
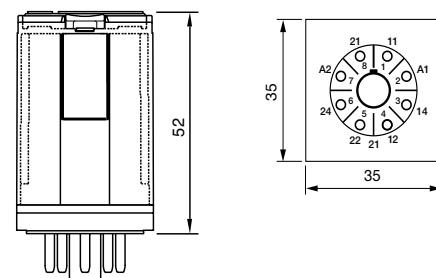


Fig. 2 DC load limit curve



Dimensions [mm]



Technical approvals, conformities



IEC 61810; EN 60947

C2-G2x

8-pin standard relay, 2-pole, plug-in according to IEC 60067

| | | | |
|-----------------------------|--|-------------------------|--|
| Type | C2-G2x/ ... V Standard relays, DC application 2 open contacts | | |
| Maximum contact load | 10 A/250 V AC-1 | 1,2 A/110 V DC-1 | |
| | 10 A/30 V DC-1 | 0,4 A/220 V DC-1 | |

| | | | |
|--------------------------------|----------|--------|------------|
| Contacts | | | |
| Material | Standard | Code 0 | AgNi |
| Rated current | | | 10 A |
| Switch-on current max. (20 ms) | | | 30 A |
| Switching voltage max. | | | 250 V |
| AC load (Fig 1) | | | 2,5 kVA |
| DC load | | | see Fig. 2 |

| | |
|-----------------|-----------------------------|
| Coil | |
| Coil resistance | see table; tolerance ± 10 % |
| Pick-up voltage | ≤ 0,8 × U _N |
| Release voltage | ≥ 0,1 × U _N |
| Nominal power | 2,4 VA (AC)/1,6 W (DC) |

| Coil table | VAC | Ω | mA | VDC | Ω | mA |
|-------------------|-----|-----|-----|-----|------|-----|
| | 24 | 65 | 100 | 24 | 360 | 66 |
| | 48 | 286 | 50 | 48 | 1K4 | 34 |
| | 115 | 1K7 | 21 | 110 | 7K6 | 15 |
| | 230 | 6K8 | 10 | 220 | 30K3 | 7,5 |

| | |
|--------------------------------|-----------------|
| Insulation | Volt rms, 1 min |
| Contact open | 2000 V |
| Contact/contact | 2,5 kV |
| Contact/coil | 2,5 kV |
| Insulation resistance at 500 V | ≥ 1 GΩ |
| Insulation, EN 61810-1 | 2,5 kV/3 |

| | |
|---------------------------------------|--------------------------------------|
| Specifications | |
| Ambient temperature operation/storage | -40 (no ice)...60 °C / -40 ... 80 °C |
| Pick-up time/bounce time | 20 ms/≤ 3 ms |
| Release time/bounce time | 8 ms/≤ 1 ms |
| Mechanical life ops | AC: 10 Mill./DC: 20 Mill. |
| DC voltage endurance at rated load | ≥ 100000 switching cycles |
| Switching frequency at rated load | ≤ 1200/ops/h |
| Protection class | IP40 |
| Weight | 79 g |

| | |
|---|--|
| Standard types | |
| VAC 50 Hz/60 Hz: 24, 48, 115 (120), 230 (240) LED | C2-G20/AC ... V C2-G20X/AC ... V |
| VDC 24, 48, 110, 220 LED | C2-G20/DC ... V C2-G20X/DC ... V |
| Free wheeling diode | C2-G20DX/DC ... V C2-G20FX/DC ... V |
| Polarity and free wheeling diode | |
| AC/DC bridge rectifier 24 V, 48 V, 60 V | C2-G20BX/UC ... V |

"..." Enter the voltage for full type designation

| | |
|---------------------------------------|--------------------------------------|
| Accessories | |
| Socket: | S2-B, S2-S, S2-L, S2-P, S2-P0 |
| Optional accessories (blanking plug): | SO-NP, SO-OP |
| Retaining clip, plastic: | S30-CM |



Connection diagram

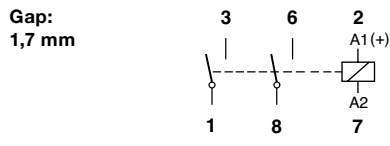


Fig. 1 AC voltage endurance

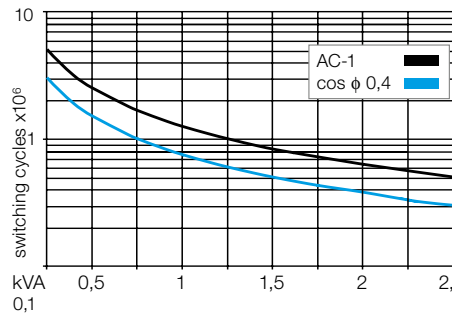
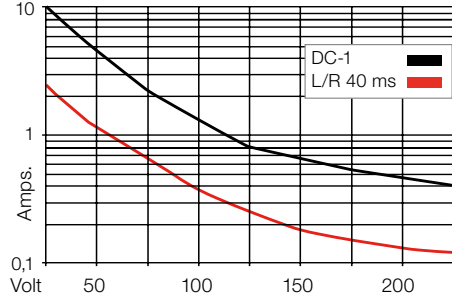
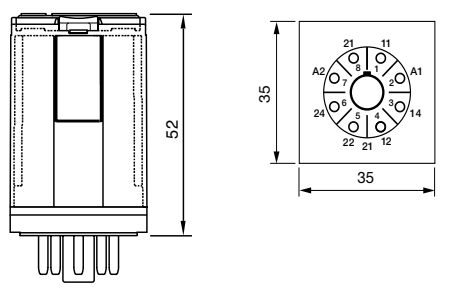


Fig. 2 DC load limit curve



Dimensions [mm]



Technical approvals, conformities

